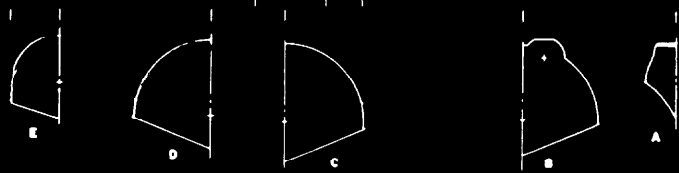
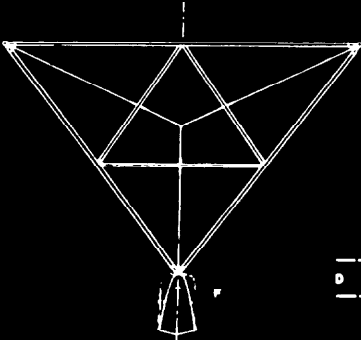
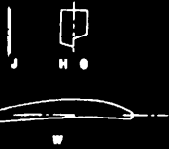
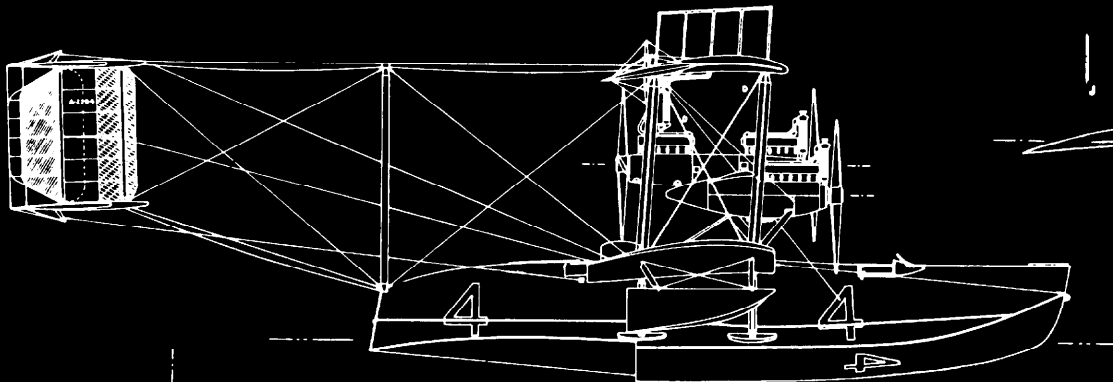
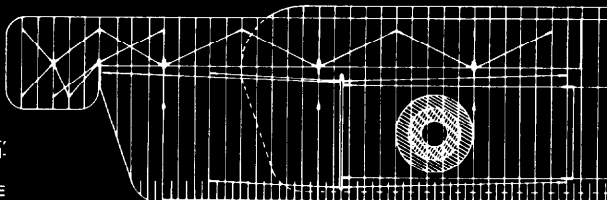


HULL F E D C B A
 FLOAT J H O



--- LOADED WATERLINE
 --- DOUBLE WIRES
 --- CENTERLINES



COLOR SCHEME

- HARBOR GRAY ENAMEL
- NATURAL ALUMINUM
- BRASS
- BROWNISH YELLOW
- BLACK
- VARNISHED WOOD
- COPPER
- WHITE
- RED, WHITE, & BLUE

(MEDIUM GRAY WITH SLIGHT BLuish TINT) — USED ON HULL, FLOATS, TAIL BOOMS, STRUTS, & PLYWOOD-COVERED LOWER CENTER SECTION

ENGINE NACELLES (UNPAINTED), ENGINE BLOCKS, & NACELLE FACEPLATES
 RADIATORS

ALL UNPAINTED FABRIC-COVERED SURFACES (BROWNISH YELLOW CAST CAUSED BY AGING OF NATURAL VARNISH WHICH CONTAINED AN ORGANIC HANSA YELLOW PIGMENT)

TAIL NUMBERS, CYLINDER BANKS, LEATHER PADDING AROUND COCKPITS

PROPS (WITH BRASS LEADING EDGES) & COCKPIT SEAT SLATS

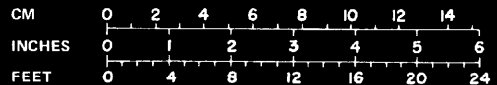
TUBING & WATERLINES

WALKWAYS AND NO. 4 ON HULL SIDES & BOTTOM

WING ROUNDELS & TAIL STRIPES

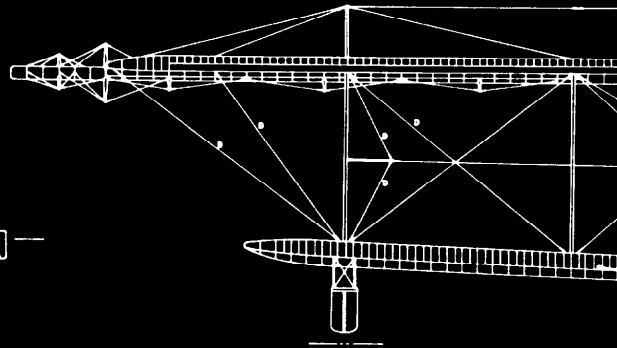
ROUNDLS — RED OUTSIDE RING, BLUE MIDDLE RING, & WHITE CENTER VERTICAL STABILIZER TAIL STRIPES (OUTSIDE SURFACES ONLY) — RED, WHITE, & BLUE FROM FRONT TO BACK IN 3 EQUAL SPACES. RUDDER WAS ALL BLUE

NC-4

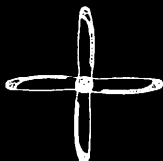


SPECS

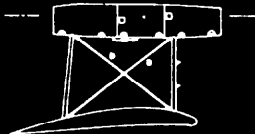
| | | |
|-----------------|-----------------------------|---------------------------------------|
| WING SPAN | UPPER = 126' 0" | LOWER = 96' 0" |
| WING DIHEDRAL | UPPER — NONE | LOWER = 3° OUTBOARD OF CENTER SECTION |
| WING CHORD | 12' 0" ON BOTH WINGS | (RAF 6 AIRFOIL) |
| WING INCIDENCE | 3° ON BOTH | |
| TAIL SPAN | UPPER = 37' 11" | LOWER = 26' 0" |
| TAIL CHORD | 8' 10" | |
| TAIL INCIDENCE | 2° ON BOTH | |
| OVER-ALL LENGTH | 68' 1-7/8" | |
| HULL LENGTH | 44' 8-3/4" | |
| HULL WIDTH | 10' 0" | |
| TOTAL HEIGHT | 24' 5-1/4" | |
| ENGINES | LIBERTY, 400 HP AT 1650 RPM | |
| PROPS | 10' DIA. WOODEN, PARAGON | |



PROP FRONT VIEW

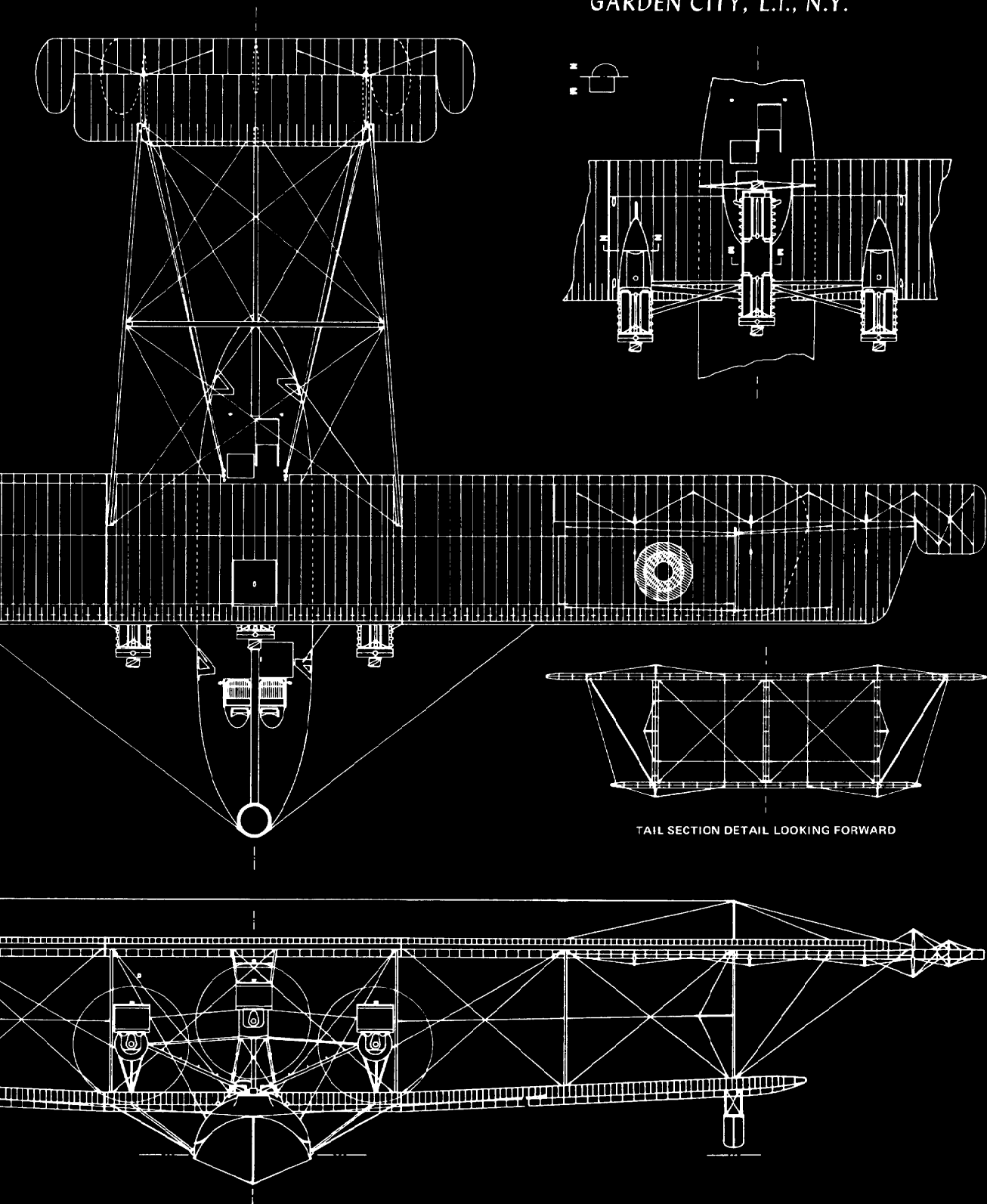


REAR PUSHER PROP
 LOOKING FORWARD



CENTER NACELLE DETAIL

THE CURTISS AEROPLANE & MOTOR CORP.
GARDEN CITY, L.I., N.Y.



TAIL SECTION DETAIL LOOKING FORWARD