



Rec'd 12/15/92
**DEPARTMENT OF THE NAVY
USS MOUNT WHITNEY (LCC-20)
FLEET POST OFFICE
AE 09517-3310**

5757
LCC20:00/747
09 DEC 1992

From: Commanding Officer, USS MOUNT WHITNEY (LCC 20)
To: Director of Naval History (OP-09BH)

Subj: COMMAND HISTORY 1991 (OPNAV REPORT 5720-1)

Ref: (a) OPNAVINST 5750.12E

**Encl: (1) Command Organization
(2) Chronology
(3) Narrative of Significant Events
(4) Supporting Documents**

1. In accordance with reference (a), enclosures (1) through (4) are submitted.

2. The Command history is organized in the following manner:

(a) Command composition/organization (which contains a mission statement wire diagram, and list of ship's officer)

(b) Chronology

(c) Narrative of significant events

(d) Supporting documents.

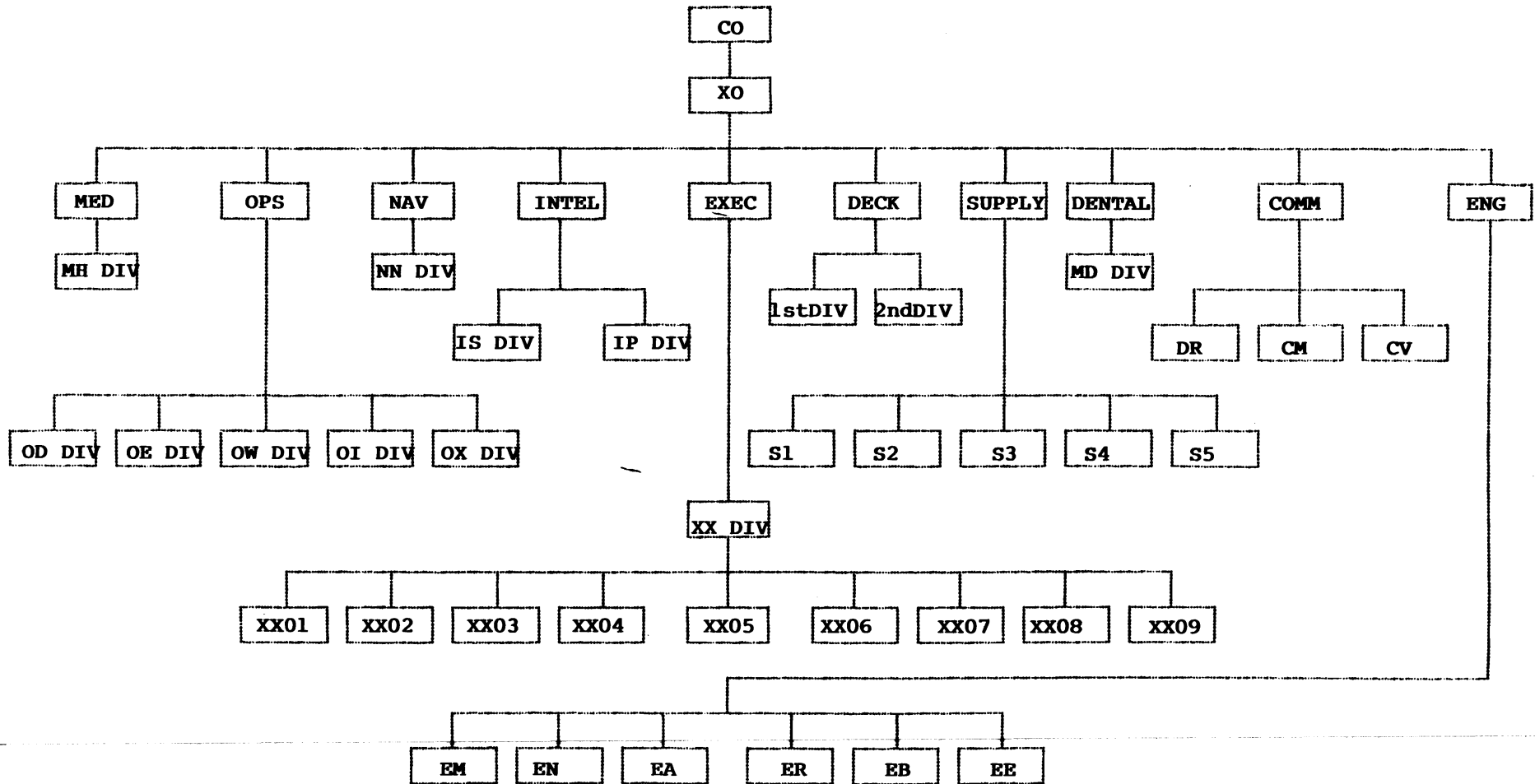
D. L. Brewer
D. L. BREWER

Copy to:
COMNAVSURFLANT
COMSECONDFLT
COMPHIBGRU TWO
COMMANDING GENERAL FOURTH MEB
COMPHIBRON TWELVE

I. COMMAND COMPOSITION/ORGANIZATION

- A. MISSION: COMSTRIKFLTANT'S PRIMARY MISSION IS DETERRENCE OF AGGRESSION BY THE ESTABLISHMENT AND CONTROL OF THE ATLANTIC COMMAND'S VITAL SEA AREAS, AND THE PROVISION OF SUPPORT TO ATLANTIC COMMAND FORCES, ADJACENT NATO FORCES, AND NATIONAL COMMANDERS.
- B. ORGANIZATIONAL STRUCTURE: SEE ATTACHED
- C. COMMANDING OFFICER: DAVID L. BREWER, III
- D. PERMANENT DUTY STATION: NORFOLK, VA.
- F. TYPE AND NUMBER OF ACFT ASSIGNED: SH-3, ONE
- G. LIST OF SHIP'S OFFICERS: SEE ATTACHED

USS MOUNT WHITNEY SHIPBOARD ORGANIZATION



III. NARRATIVE

USS MOUNT WHITNEY CHANGE OF COMMAND, NORFOLK, VA., 3 APRIL 1991

CAPT DAVID L. BREWER III, USN, RELIEVED CAPT MORTON W. KENYON, USN, IN TRADITIONAL CHANGE OF COMMAND CEREMONIES IN MOUNT WHITNEY'S HOMEPORT OF NORFOLK, VA. VADM MICHAEL P. KALLERES, COMSECONDFLT, WAS GUEST SPEAKER.

MARCOMDET DESERT SHIELD/DESERT STORM SUPPORT, 18 AUGUST 1990 - 20 APRIL 1991

MEMBERS OF THE USS MOUNT WHITNEY'S MARINE COMMUNICATIONS DETACHMENT WERE EMBARKED ABOARD THE USS NASSAU (LHA-4), ATTACHED TO THE FOURTH MARINE EXPEDITIONARY BRIGADE (G-6), TO PROVIDE COMMUNICATIONS SUPPORT DURING OPERATIONS DESERT SHIELD AND DESERT STORM. DURING THESE OPERATIONS MARINES FROM THE MOUNT WHITNEY ASSISTED IN THE DRAFTING AND COORDINATING OF COMMUNICATIONS PLANS AND ASSETS, OVERSEEING THE DAILY OPERATION AND MAINTENANCE OF ALL MARINE COMMUNICATION FUNCTIONS, AND PROVIDED THE NECESSARY MANPOWER NEEDED TO AID THE UNUSUALLY HEAVY MESSAGE TRAFFIC LOAD DURING THIS PERIOD.

FLEET WEEK, NEW YORK CITY, 6 - 10 JUNE

FLEET WEEK THIS YEAR INCLUDED A PARADE OF SHIPS -- INCLUDING TWELVE ATLANTIC FLEET SHIPS, TWO U.S. COAST GUARD SHIPS AND ONE ROYAL NAVY SHIP -- AND A MULTI-SERVICE TICKER-TAPE "PARADE OF HEROES" FOR VETERANS OF OPERATIONS DESERT SHIELD/DESERT STORM. MORE THAN 10,000 ATLANTIC FLEET SAILORS AND MARINES WERE ON HAND; MANY MARCHED IN THE PARADE BEFORE MORE THAN SIX-MILLION SPECTATORS. MORE THAN 75,500 VISITORS TOURED NINE SECOND FLEET SHIPS IN NEW YORK HARBOR THROUGH THE WEEK. DISTINGUISHED VISITORS INCLUDED THE HONORABLE DAVID N. DINKINS, MAYOR OF NEW YORK.

SOVIET NORTHERN FLEET VISIT, MAYPORT, FL, 16 - 20 JULY

THREE SOVIET SHIPS WITH NEARLY 1,000 SAILORS ABOARD VISITED THE CITY OF JACKSONVILLE, FL. & NAVAL STATION MAYPORT. SOVIET SHIPS INCLUDED: MARSHAL USTINOV, SLAVA-CLASS GUIDED MISSILE CRUISER; SIMFEROPOL, UDALOY-CLASS GUIDED MISSILE CRUISER; DNESTR, BORIS CHILIKIN-CLASS REPLENISHMENT SHIP. DISTINGUISHED VISITORS INCLUDED: ADMIRAL FELIKS NILOLAYEVICH GROMOV (COMMANDER IN CHIEF, SOVIET NORTHERN FLEET), HIS EXCELLENCY VICTOR KOMPLETOV (SOVIET AMBASSADOR TO U.S.), ADMIRAL LEON EDNEY (SUPREME ALLIED COMMANDER ATLANTIC), AND ADMIRAL PAUL MILLER (COMMANDER IN CHIEF, U.S. ATLANTIC FLEET).

EXERCISE NORTHSTAR '91, NORTH ATLANTIC OPERATIONS AREA, 01 SEP - 09 OCT

EXERCISE NORTHSTAR '91 TESTED THE INTEROPERABILITY AND OPERATIONAL CAPABILITY OF EIGHT NATO MARITIME HEADQUARTERS AND FORCES IN A REALISTIC AT-SEA ENVIRONMENT. TEN U.S. NAVY SHIPS, INCLUDING THE USS AMERICA CARRIER BATTLE GROUP, AND APPROXIMATELY 9,500 U.S. NAVY

(ENCL 3)

PERSONNEL REPUBLIC OF GERMANY, THE NETHERLANDS, NORWAY, AND THE UNITED KINGDOM ALSO PARTICIPATED IN NORTHSTAR '91, AS WELL AS NATO'S STANDING NAVAL FORCE ATLANTIC. MORE THAN 17,000 ALLIED PERSONNEL WERE INVOLVED, MOST EMBARKED IN ABOUT 55 SHIPS. MORE THAN 200 SHORE-AND-SEA-BASED AIRCRAFT WERE UTILIZED IN THE EXERCISE.

MORE THAN 40 DISTINGUISHED VISITORS EMBARKED USS AMERICA AND USS MOUNT WHITNEY DURING EXERCISE NORTHSTAR '91, INCLUDING: HONORABLE J. DANIEL HOWARD (UNDERSECRETARY OF THE NAVY), HONORABLE CHARLES E. COBB, JR. (U.S. AMBASSADOR TO ICELAND), HONORABLE LORET MILLER-RUPPE (U.S. AMBASSADOR TO NORWAY), AMBASSADOR ROBERT TRAUSTI ARNASON (DIRECTOR, ICELAND DEFENSE DEPARTMENT), RADM THOMAS F. HALL, USN (ISLAND COMMANDER ICELAND/COMMANDER, ICELAND DEFENSE FORCE), RADM JORGEN JAKOBSEN, DA N (NAVAL DEPARTMENT, AFNE), GEN PATRICK PALMER, UK A (CINCNORTH), LGEN. D. DANIELSON (COMNOR), VADM SIR NICHOLAS HILL-NORTON, RN (COMASWSTRIKFOR), VADM BJORNAR J. KIBSGAARD, NO N (COMSONOR), MS. EISA ERIKSEN (STATE SECRETARY FOR DEFENSE, NORWAY).

LIST OF SHIP'S COMPANY OFFICERS

	DAVID L. STERLING	BREWER, III SPENCER	
CAPT			COMMANDING OFFICER
CDR			EXECUTIVE OFFICER
CDR			CHAPLAIN
CDR			OPERATIONS OFFICER
LCDR			SUPPLY OFFICER
LCDR			DENTAL OFFICER
LCDR			ENGINEERING OFFICER
LCDR			INTEL OFFICER
LT			OPERATIONS
LT			MEDICAL OFFICER
CAPT (USMC)			MARCOMDET CO
LT			1ST LT
LT			COMMUNICATIONS OFFICER
LT			SUPPLY
LT			NAVIGATION OFFICER
LT			INTEL
LT			OPERATIONS
LT			COMMUNICATIONS
LT			OPERATIONS
LT			DECK
LT			ENGINEERING
LT			ENGINEERING
LT			OPERATIONS
LT			ENGINEERING
LTJG			DECK
LTJG			INTEL
LTJG			SUPPLY
LTJG			INTEL
LTJG			OPERATIONS
LTJG			COMMUNICATIONS
LTJG			INTEL
LTJG			DECK
LTJG			SUPPLY
ENS			ENGINEERING
ENS			ENGINEERING
ENS			SUPPLY
CWO4			ENGINEERING
CWO4			OPERATIONS
CWO3			ADMIN OFFICER
CWO2			OPERATIONS
CWO2			DECK
CWO2			COMMUNICATIONS
CWO2			SECURITY OFFICER
CWO2			ENGINEERING

II. CHRONOLOGY JAN 91-JAN 92

JAN 91		
04	ELW-4-SF	TRAEX
06	FSO-M-4-SF	CHEST WOUND TRAEX
07	FSO-M-2-SF	TRAEX
08-01 FEB	IMAV, SIMA NORFOLK	
10	FSO-M-3-SF	TRAEX
12	MOB-D-7,12-SF	IPT TRAEX
13	FSO-M-5-SF	TRAEX
14-15	U/W HULL CLEANING	
14-18	CSSRT PHASE II	
18	MOB-E-115-SF	TRAEX
	U/W HULL CLEANING	
23	MOB-D-14-SF	IPT TRAEX
	OCSOT	
	FAST CRUISE	
	TACAN CERT	
24-30	FORRESTAL WORK-UPS/JAX OPAREA	
25	MOB-E-100-SF	TRAEX
26	AAW-3,10,16-SF	TRAEX
	AAW-11-I	TRAEX
	CCC-1,2,3,4,5,6,7,10,	
	11,12,13,14,15,16,	
	17,18,20,22-SF	TRAEX
	INT-1,2,3-SF	OP TRAEX
	INT-1,2-SF	RP TRAEX
	INT-5-SF	IS TRAEX
	INT-1-SF	MS TRAEX
	ELW-4,6,7,8-SF	TRAEX
	ELW-1-I	TRAEX
	MOB-D-3,5,7,11,12,23-SF	TRAEX
	MOB-N-1-SF	NAV IN EW ENVIRON
27	ELW-8-SF	TRAEX
28	AAW-3-SF	LIVE AIR TRACKING
	AAW-11-I	TRAEX
	ELW-3-SF	TRAEX
	MOB-D-14,15-SF	U/W TRAEX
	MOB-S-8,14-SF	TRAEX
	AVIATION READINESS EVAL	
29	MOB-D-16,21-SF	U/W TRAEX
	MOB-N-2,6-SF	TRAEX
30	FSO-M-8-SF	ELECTRICAL SHOCK
		TRAEX
FEB 91		
01	FSO-M-7-SF	FACIAL WOUND
06	MOB-D-4-SF	TRAEX
07	MOB-D-12,13,20,21-SF	IPT TRAEX
	ARE	
09	CCC-20-SF	TRAEX
	MOB-D-9,11-SF-	IPT TRAEX
10	FSO-M-6-SF	TRAEX (ENCL 2)

11	CCC-16,17,18-SF	TRAEX
12	CCC-15-SF	TRAEX
14	CCC-21-SF	TRAEX
	MOB-S-10-SF	TRAEX
16	INT-1,3-SF	OP TRAEX
17	CCC-2-SF	TRAEX
18	CCC-7,8-SF	TRAEX
	CCC-1-I	TRAEX
19-21	OPPE PREPS/VACAPES	
19	CCC-1,4,5,6,9-SF	TRAEX
	MOB-N-4-SF	TRAEX
	MOB-S-6-SF	TRAEX
20	CCC-13,14-SF	TRAEX
	MOB-E-010-SF	TRAEX
	MON-N-7-SF	TRAEX
	FSO-M-9-SF	TRAEX
	OCSOT	
21	ELW-6-SF	TRAEX
	MOB-E-103-SF	TRAEX
	INT-1-SF	MS TRAEX
23	MOB-D-10-SF	IPT TRAEX
25	INT-5-SF	IS TRAEX
27	CCC-19-SF	TRAEX
28	CCC-3-SF	TRAEX
29	MOB-D-2,3,4-SF	TRAEX
MAR 91		
05	GAGE CAL PROGRAM REVIEW	
08-19	OPPE PREPS/VACAPES	
12	MOB-D-11-SF	TRAEX
17	MOB-D-9,10-SF	U/W TRAEX
25-29	OPPE/VACAPES	
25	MOB-N-4,6,7-SF	TRAEX
26	ELW-5,6-SF	TRAEX
27	MOB-E-009,010,106,108,406-SF	TRAEX
27-29	OPPE	
28	MOB-E-101,110,111,408-SF	TRAEX
APR 91		
02	CCC-4,13,20-SF	TRAEX
03	MTW CHANGE OF COMMAND CEREMONY CAPT D.L. BREWER,III RELIEVED CAPT M.W. KENYON	
08	CCC-5,6-SF	TRAEX
10	INCLINING EXPERIMENT	
11	CCC-1-SF	TRAEX
12	CCC-11-SF	TRAEX
	MOB-D-9-SF	IPT TRAEX
15	CCC-14,17-SF	TRAEX
16	CCC-2,16,18-SF	TRAEX
17	CCC-15-SF	TRAEX
18	CCC-12-SF	TRAEX
19	AAW-2,3-SF	TRAEX (ENCL 2)

	CCC-9-SF	TRAEX
	CCC-1-I	TRAEX
	INT-1,2-SF	OP TRAEX
20	MOB-D-12-SF	IPT TRAEX
	MARCOMDET RETURNS FROM DESERT STORM SUPPORT (EMBARKED ABOARD USS NASSAU DET-AUG 90)	
23	MOB-D-10,14,23-SF	IPT TRAEX
24	CCC-21-SF	TRAEX
	MOB-D-20-SF	IPT TRAEX

MAY 91

01	CCC-7-SF	TRAEX
	MOB-E-006,012,102,109,113,115-SF	TRAEX
02	CCC-20-SF	TRAEX
04	CCC-21-SF	TRAEX
07	CCC-11-SF	TRAEX
08	MOB-E-005,105,108-SF	TRAEX
	MOB-0-12-SF	IPT TRAEX
09	CCC-5,6-SF	TRAEX
10	MON-0-9-SF	IPT TRAEX
11	CCC-12,13-SF	TRAEX
13	CCC-4,16,17-SF	TRAEX
14	CCC-15,18-SF	TRAEX
17	OFFICIAL VISIT HELLENIC NAVY GENERAL STAFF	
17-30 JUN	IMAV, SIMA NORFOLK	
19	CCC-14-SF	TRAEX
20	MOB-D-14-SF	IPT TRAEX
20-24	U/W HULL CLEANING	
21	INT-2-SF	OP TRAEX
22	MOB-D-3,23-SF	TRAEX
	MOB-0-11-SF	TRAEX
23	MOB-D-10-SF	IPT TRAEX
24	AAW-3,10,16-SF	TRAEX
	AAW-10-I	TRAEX
	ASU-1-SF	TRAEX
	ELW-4,5,7,8,25-SF	TRAEX
	CCC-8,19-SF	TRAEX
	CCC-1-I	TRAEX
28	CCC-21-SF	TRAEX
29	CCC-1,11-SF	TRAEX

JUN 91

03	MOB-D-12,13-SF	IPT TRAEX
	AVIATION FACILITIES INSPECTION	
04	MARCOMDET CHANGE OF COMMAND	
04-12	FLEETWEEK/NEW YORK	
	DISTINGUISHED VISITORS INCLUDED:	
	HON. DAVID N. DINKINS, MAYOR OF NEW YORK	
	MR. ZACHARY FISHER, FLEET WEEK CHAIRMAN	
	VADM S.R. ARTHUR, COMMANDER SEVENTH FLEET	

05	CCC-2-SF	TRAEX
	MOB-D-4,11-SF	TRAEX
	MOB-N-1,2,3,4,5,6,7,8-SF	TRAEX
06	CCC-4,5,6-SF	TRAEX
07	SMI ASSIST VISIT	
09	CCC-12-SF	TRAEX
10	CCC-16,17-SF	TRAEX
	MOB-S-25-SF	TRAEX
10-12	3-M ASSIST VISIT	
11	CCC-8,15,18-SF	TRAEX
	MOB-E-012,109-SF	TRAEX
	MOB-D-24-SF	TRAEX
12	AAW-3-SF	TRAEX
	ELW-6-SF	TRAEX
	CCC-1-I	TRAEX
	MOB-D-23-SF	TRAEX
	MOB-S-5,13-SF	TRAEX
14	CCC-7-SF	TRAEX
17	ELW-17-SF	TRAEX
19	ELW-25-SF	TRAEX
	CCC-1,20-SF	TRAEX
	MOB-D-3,10-SF	TRAEX
	MOB-S-7-SF	TRAEX
	INT-1-SF	MS TRAEX
20	MOB-D-14-SF	IPT TRAEX
28	MOB-E-103-SF	TRAEX

JULY 91

01	CCC-1,4,15,16,17,18-SF	TRAEX
02	OFFICIAL VISIT VADM MAUZ, DCNO NAVY PROGRAM PLANNING (OP-08)	
	CCC-15-SF	TRAEX
04	MOB-D-12,20-SF	IPT TRAEX
09	CCC-2-SF	TRAEX
	MOB-D-10-SF	IPT TRAEX
10	CCC-10,20-SF	TRAEX
12-09 AUG	FLEETEX 4-91/MAYPORT/ST. THOMAS	
12	MOB-D-14-SF	IPT TRAEX
13	CCC-11,26-SF	TRAEX
	MOB-N-2,4,6,7-SF	TRAEX
15	CCC-7-SF	TRAEX
	MOB-S-5-SF	TRAEX

16-20 SOVIET NORTHERN FLEET VISIT, MAYPORT, FL
OFFICIAL VISITORS INCLUDED:
ADM FELIKS NILOLAYEVICH GROMOV,
(COMMANDER IN CHIEF, SOVIET NORTHERN FLEET)
CAPT 2ND RANK GRIGORITY IVANOVICH FRUNZA,
(COMMANDING OFFICER, MARSHAL USTINOV-SLAVA DDG)
CAPT 1ST RANK IGOR VLADIMIROVICH PISKUNENKO,
(COMMANDING OFFICER, SIMFEROPOL-UDALOY DDG)

VLADIMIR AL' BIONOVICH URBANOVICH,
 (COMMANDING OFFICER, DNESTER-BORIS CHILIKIN AOR)
 HIS EXCELLENCY VICTOR KOMPLETOV,
 (SOVIET AMBASSADOR TO UNITED STATES)
 ADM LEON EDNEY,
 (SUPREME ALLIED COMMANDER ATLANTIC)
 ADM PAUL D. MILLER,
 (COMMANDER IN CHIEF, U.S. ATLANTIC FLEET)

16	MOB-E-115-SF	TRAEX
17	AAW-13-I	TRAEX
21	CCC-5,6,8,21-SF	TRAEX
	INT-5-SF	IS TRAEX
22	ELW-1-I	TRAEX
	CCC-12-SF	TRAEX
	MOB-D-14-SF	U/W TRAEX
	MOB-E-109-SF	TRAEX
23	CCC-24-SF	TRAEX
24	OFFICIAL VISIT BARBARA POPE, UNDER SECRETARY OF THE NAVY FOR MANPOWER AND RESERVE AFFAIRS.	
	AAW-3-SF	TRAEX
	CCC-1-I	TRAEX
	MOB-E-006,112-SF	TRAEX
	MOB-D-24-SF	TRAEX
25	ELW-6,7,17-SF	TRAEX
	NOB-S-16-SF	TRAEX
26	INT-1-SF	OP TRAEX
	INT-1-SF	RP TRAEX
	INT-1-SF	MS TRAEX
30	MOB-D-8-SF	TRAEX
	MOB-S-10-SF	TRAEX
31	MOB-S-16-SF	TRAEX
	FSO-M-2,9-SF	TRAEX

AUG 91

01	CCC-1,4,5-SF	TRAEX
	MOB-D-6,20-SF	TRAEX
	FSO-M-7-SF	TRAEX
02	CCC-6,12-SF	TRAEX
	MOB-D-4,9-SF	TRAEX
03	CCC-10-SF	TRAEX
	MOB-D-2,3,15-SF	TRAEX
04	MOB-N-5-SF	TRAEX
05	FSO-M-3,4-SF	TRAEX
06	FSO-M-5,6-SF	TRAEX
07	CCC-24-SF	TRAEX
	MOB-E-006-SF	TRAEX
	MOB-N-2-SF	TRAEX
	MOB-S-6-SF	TRAEX
	FSO-M-8-SF	TRAEX
08	AAW-3-SF	TRAEX
	ELW-5-SF	TRAEX

(ENCL 2)

	CCC-21,22-SF	TRAEX
	MOB-D-11,24-SF	TRAEX
	MOB-S-3-SF	TRAEX
09	MOB-E-103-SF	TRAEX
	MOB-N-4-SF	TRAEX
	MOB-S-5-SF	TRAEX
10-31	RAV, BOLIER/LP DRAIN VALVE REPAIRS	
13-15	U/W HULL CLEANING	
14	CCC-15,16,17,18-SF	TRAEX
	MOB-D-14-SF	IPT TRAEX
22	CCC-20-SF	TRAEX
23	MOB-D-10-SF	U/W TRAEX
24	MOB-D-20-SF	IPT TRAEX
25	MOB-D-9-SF	IPT TRAEX

SEP 91

01 SEP-09 OCT NORTHSTAR 91/PORTSMOUTH
OFFICIAL VISITORS INCLUDED: HONORABLE J. DANIEL HOWARD (UNDERSECRETARY OF THE NAVY), HONORABLE CHARLES E. COBB JR. (U.S. AMBASSADOR TO ICELAND), HONORABLE LORET MILLER-RUPPE (U.S. AMBASSADOR TO NORWAY), AMBASSADOR ROBERT TRAUSTI ARNASON (DIRECTOR, ICELAND DEFENSE DEPARTMENT), RADM THOMAS F. HALL, USN (ISLAND COMMANDER ICELAND / COMMANDER, ICELAND DEFENSE FORCE), RADM JORGEN JAKOBSEN (DA A, NAVAL DEPARTMENT, AFNE), GEN. PATRICK PALMER (UK A, CINCNORTH), LGEN. D. DANIELSEN (COMMON), VADM SIR NICHOLAS HILL-NORTON (RN, COMASWSTRIKFOR) VADM BJORNAR J. KIBSGAARD (NO N, COMSONOR) MS. EISA ERIKSEN (STATE SECRETARY FOR DEFENSE, NORWAY), RADM VAN DE SANDE (CDR NETH TASK GROUP)

01	ELW-24-SF	TRAEX
	CCC-1,4,5,10,12-SF	TRAEX
	MOB-N-2,4,7-SF	TRAEX
02	MOB-D-14,15-SF	U/W TRAEX
	MOB-N-8-SF	TRAEX
03	CCC-21-SF	TRAEX
04	CCC-22-SF	TRAEX
	MOB-D-26,27-SF	TRAEX
05	CCC-6-SF	TRAEX
06	CCC-24-SF	TRAEX
	MOB-D-1,6,7,8,12-SF	TRAEX
07	CCC-15,16,17,18-SF	TRAEX
	MOB-S-8-SF	TRAEX
	FSO-M-1,2,3,4,5,6,7,8,9-SF	TRAEX
08	CCC-1-I	TRAEX
09	MOB-E-111-SF	TRAEX
11	CCC-9-SF	TRAEX
12	CCC-19-SF	TRAEX
	MOB-D-20-SF	U/W TRAEX (ENCL 2)

13	AAW-24-B	TRAEX
	MOB-D-10-SF	U/W TRAEX
14	ELW-7-SF	TRAEX
	MOB-S-9-SF	TRAEX
15	AAW-17-SF	TRAEX
	AAW-14-I	TRAEX
16	ELW-4,17-SF	TRAEX
	MOB-E-009-SF	TRAEX
17	AAW-3,10,16-SF	TRAEX
	AAW-3,7,8,10,11,15-I	TRAEX
	ELW-23-SF	TRAEX
	MOB-D-5-SF	TRAEX
18	ASU-1-SF	TRAEX
	ELW-6-SF	TRAEX
	CC-20-SF	TRAEX
	MOB-E-006,110-SF	TRAEX
19	ELW-8-SF	TRAEX
	ELW-1-I	TRAEX
	CCC-1-I	TRAEX
	MOB-D-13-SF	U/W TRAEX
20	ELW-25-SF	TRAEX
	CCC-3-SF	TRAEX
21	MOB-E-005,012,102,109-SF	TRAEX
	MOB-D-3-SF	TRAEX
	MOB-D-9-SF	U/W TRAEX
	MOB-D-11,14,23-SF	TRAEX
22	MOB-D-24-SF	TRAEX
24	MOB-D-12,14-SF	IPT TRAEX
OCT 91		
01	CCC-1,4,5,10,11-SF	TRAEX
	MOB-D-1,5,26,27-SF	TRAEX
02	ELW-6-SF	TRAEX
	CCC-12-SF	TRAEX
	CCC-1-I	TRAEX
	MOB-E-010,012,102,109-SF	TRAEX
	FSO-M-1-SF	TRAEX
03	ELW-8-SF	TRAEX
	MOB-D-10-SF	U/W TRAEX
04	MOB-D-6,7,8,12,13,20-SF	TRAEX
05	ELW-4-SF	TRAEX
	CCC-18-SF	TRAEX
	MOB-D-11-SF	TRAEX
	FSO-M-2,8-SF	TRAEX
06	AAW-4,11,24-I	TRAEX
	CCC-21-SF	TRAEX
	MOB-D-16-SF	TRAEX
07	CCC-9,20-SF	TRAEX
	MOB-D-4-SF	TRAEX
	MOB-S-10-SF	TRAEX
	FSO-M-9-SF	TRAEX
	INT-1-SF	OP TRAEX
	INT-5-SF	IS TRAEX
08	MOB-E-005,007,103,107,108,113-SF	TRAEX (ENCL 2)

09	ELW-17-SF	TRAEX
	CCC-6-SF	TRAEX
	MOB-D-2,3,9,14,23-SF	TRAEX
	INT-1-SF	RP TRAEX
10	ELW-25-SF	TRAEX
	MOB-D-24-SF	TRAEX
	MOB-2-2-SF	TRAEX
	MOB-S-5-SF	TRAEX
11		
14-15	NOV	IMAV, SIMA NORFOLK
14-08	NOV	RAV, MAIN CONDENSER REPAIRS
14-22	NOV	RAV, 1B AND 1C SSTG's REPAIR ROTORS
14-25	OCT	PHILA NAVAL SHIPYARD, DPMA 93 SHIPALY CHECK
17		CCC-22-SF
		TRAEX
18		MOB-D-12-SF
		IPT TRAEX
21		CCC-15,16-SF
		TRAEX
		MOB-D-10-SF
		IPT TRAEX
23		CCC-17-SF
		TRAEX
		MOB-D-14-SF
		IPT TRAEX
24		MOB-D-9-SF
		IPT TRAEX
25		INT-2-SF
		OP TRAEX
NOV	91	
07-13		U/W HULL CLEANING
22-24		EMAT PREPS/VACAPES
DEC	91	
02-06		EMAT
06-10		PEARL HARBOR DAY/BOSTON