



DEPARTMENT OF THE NAVY  
U S S GRAPPLE (ARS-53)  
C/O FPO NEW YORK, NEW YORK 09570-3223

5750  
Ser 07/069  
3 Apr 87

From: Commanding Officer, USS GRAPPLE (ARS 53)

To: Director of Naval History (OP-09BH)

Subj: COMMAND HISTORY OF USS GRAPPLE (ARS 53)

Ref: (a) OPNAVINST 5750.12D

Encl: (1) USS GRAPPLE (ARS 53) Command History for 1986

1. In accordance with reference (a), enclosure (1) is forwarded.

*T. B. Stark*  
T. B. STARK

**USS GRAPPLE (ARS 53) COMMAND HISTORY**  
**FOR 1986**

**I. Command Composition and Organization**

A. The primary mission of the USS GRAPPLE (ARS 53) is to assist in advance force operations, worldwide, in support of national policy. In combat, GRAPPLE will be employed to support protection of forces ashore through post-assault salvage operations in close proximity to the shore.

The GRAPPLE is designed to perform combat salvage, lifting, towing, off-ship firefighting, diving operations, and emergency repairs.

B. (1) Immediate Senior in Command: Commander, Service Squadron EIGHT, Commander Robert G. Bruce, U. S. Navy.

(2) Commanding Officer: Lieutenant Commander Timothy B. Stark, U. S. Navy.

(3) Homeport: Little Creek, VA.

**II. Chronology**

Keel Laid	25 April 1984
Launched	8 December 1984
Delivery	8 October 1986
Commissioned	15 November 1986
Light Off Examination	20-21 November 1986
Crew Certification III	24-25 November 1986
Underway from Sturgeon Bay, WI (Maiden Voyage)	3 December 1986
Arrive Toronto, Ontario	7 December 1986
Depart Toronto, Ontario	9 December 1986
Arrive Montreal, Quebec	10 December 1986
Depart Montreal, Quebec	11 December 1986
Arrive Halifax, Nova Scotia	14 December 1986
Depart Halifax, Nova Scotia	16 December 1986
Rendezvous with USNS ALGOL (T-AKR 287)	16 December 1986
Arrive Homeport Little Creek, VA	19 December 1986
Inport Little Creek, VA	19-31 December 1986

**III. Narrative**

USS GRAPPLE (ARS 53) was built by Peterson Builders, Incorporated, of Sturgeon Bay, WI. Her sponsor was Mrs. Patricia Mason Allen, wife of former National Security Advisor, Richard Allen. GRAPPLE was delivered to the Navy on 8 October 1986, and commissioned on 15 November 1986.

After a successful Light-Off Examination (20-21 November 1986) and Crew Certification (24-25 November 1986), GRAPPLE departed the building yard on 3

December 1986 and transitted to her homeport of Little Creek, VA, arriving on 19 December 1986. The transit included port visits in Toronto, Ontario; Montreal, Quebec; and Halifax, Nova Scotia. After departing Halifax, Nova Scotia, GRAPPLE was directed to rendezvous with USNS ALGOL (T-AKR 287) in the vicinity of Sable Island to provide an emergency tow. The rendezvous was completed and GRAPPLE stood by to assist ALGOL for two days; however, assistance was not required.

After arriving in Little Creek on 19 December 1986, GRAPPLE finished the year in holiday leave and upkeep.

#### **IV. Supporting Documents**

- \* (1) Commanding Officer's Photograph
- \* (2) Commanding Officer's Biography
- (3) USS GRAPPLE (ARS 53) Commissioning Book
- (4) USS GRAPPLE (ARS 53) Welcome Aboard Pamphlet
- \* (5) Photograph of GRAPPLE underway during Acceptance Trials
- (6) Photograph of GRAPPLE's crest
- (7) USS GRAPPLE (ARS 53) Organizational Chart

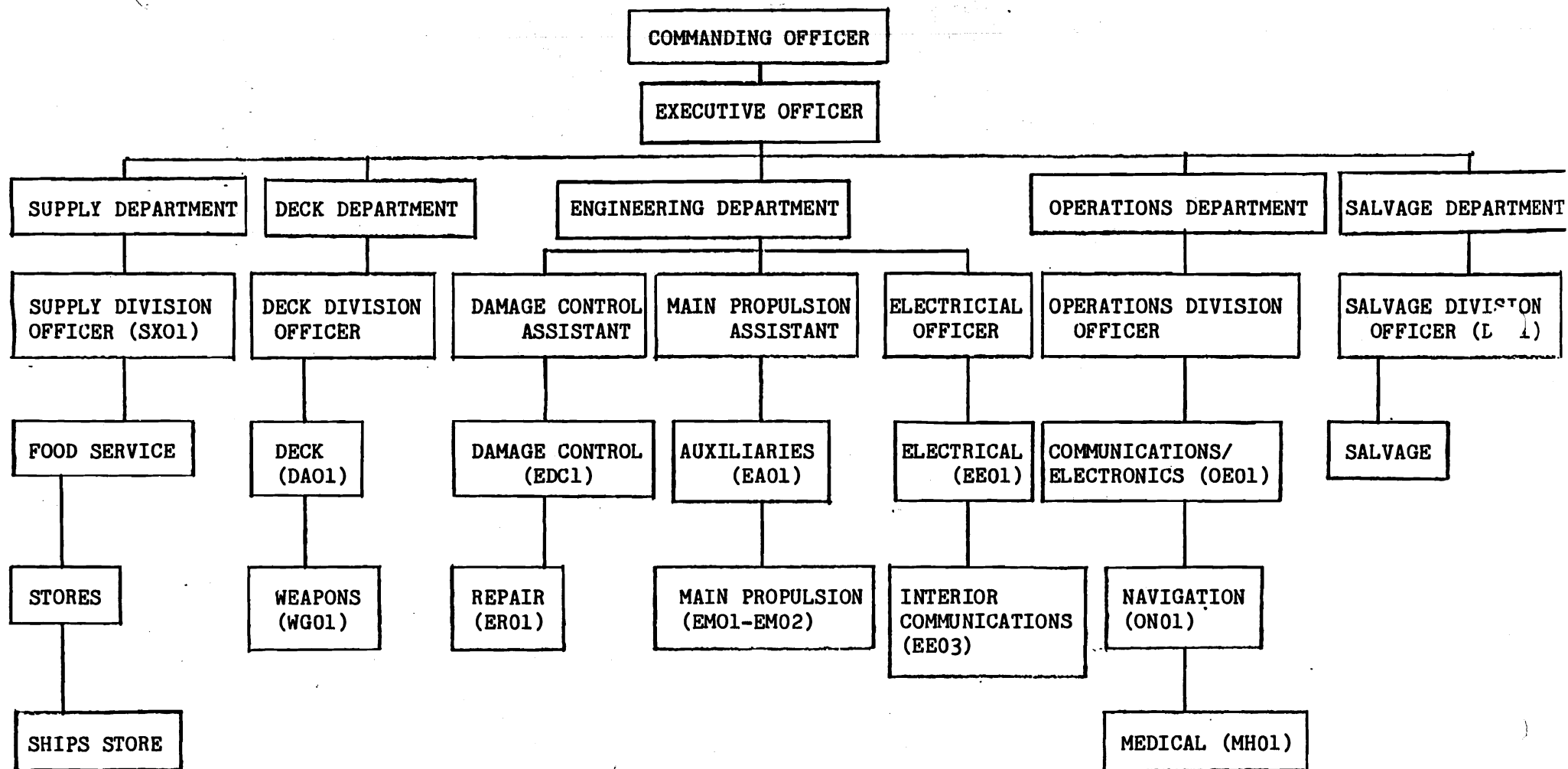


FIGURE 2-1A

ORGANIZATIONAL CHART