

1980



DEPARTMENT OF THE NAVY
FLEET LOGISTICS SUPPORT SQUADRON THREE ZERO
NAVAL AIR STATION NORTH ISLAND
SAN DIEGO, CALIFORNIA 92135

10:FRF:dg
5750
Ser 347
17 June 1981

From: Commanding Officer, Fleet Logistics Support Squadron THREE ZERO
To: Chief of Naval Operations (OP-05D2)

Subj: Command History Report(5750-1); submission of

Ref: (a) OPNAVINST 5750.12C

Encl: (1) Command History

1. In accordance with reference (a), enclosure (1) is submitted.

D. R. GAPP
D. R. GAPP

Copy to:
Director of Naval History (OP-09BH)

COMMAND HISTORY

1 JANUARY - 31 DECEMBER 1980

FLEET LOGISTICS SUPPORT SQUADRON THREE ZERO

NAVAL AIR STATION

SAN DIEGO, CALIFORNIA

D. R. GAPP, USN

COMMANDING OFFICER

FLEET LOGISTICS SUPPORT SQUADRON THREE ZERO

COMMAND HISTORY - 1980

1. Command Organization:

Change of Command	3 July 1980
CDR William J. Dooley, USN	19 June 1979 - 3 July 1980
CDR Donald R. Gapp, USN	3 July 1980 - Present

2. Fleet Logistics Support Squadron THREE ZERO, Commanded by Commander Donald R. Gapp, is based at Naval Air Station, San Diego, California. The VRC-30 "Truckin' Traders", mustering 45 officers and 160 enlisted personnel, fly a fleet of three CT-39, eight C-1A and two UC-12B aircraft. The primary mission of VRC-30 is to provide airlift and tactical support of fleet units. The North American Rockwell CT-39 "Saberliner" is utilized for rapid response transportation of urgently needed personnel and materials, with a secondary mission of VIP transport. The Sabreliner cruises at altitudes of 41,000 feet and speeds in excess of 550 mph. It can be on its way, anywhere within the continental United States with two hours notification, seven days a week. The Grumman C-1A "Trader" provides Carrier-Onboard-Delivery (COD) service for personnel, mail and material to Pacific Fleet aircraft carriers. The C-1A is also utilized by the Navy Parachute Demonstration Team for both training and airshows. VRC-30 supports Commander, Naval Air Forces, Pacific Fleet with pilot training and logistic tasking in the Beechcraft UC-12B "Super Kingair". The UC-12B is utilized for rapid response transportation of personnel and materials much the same as the Sabreliner. VRC-30 is tasked as the COMNAVAIRPAC C-1A Fleet Replacement Squadron (FRS) and C-1A NATOPS Evaluator. The squadron also provides fleet replacement pilot training for the UC-12B for COMNAVAIRPAC commands.

3. VRC-30 maintained carrier operational readiness through the use of three separate detachments, two to Corpus Christi, Texas and one to Alameda, California for carrier qualification of FRS and squadron pilots. The parachute team completed their yearly schedule utilizing VRC-30 support for eight airshows.

4. During 1980, the C-1A Fleet Replacement Squadron (FRS) tasking was fully implemented. Fifty-seven pilots and eleven aircrew completed the C-1A course. Fleet Replacement Pilot and Aircrew Syllabi were developed and implemented for the UC-12B, which eight pilots and eight aircrew completed.

5. The squadron, as the C-1A NATOPS Evaluator for the West Coast, conducted station NATOPS checks at Bremerton, Washington; Whidbey Island, Washington; Cubi Pt., R.P.; and Barking Sands, Hawaii; Point Mugu, California; China Lake, California; and for CV-43, 61, 63, 64 and 65.

6. Several significant milestones were accomplished by VRC-30 during 1980.

a. The squadron in conjunction with Grumman Aerospace, celebrated the 25th anniversary of the C-1A during January in a formal ceremony with RADM Jack CHRISTIANSEN, USN, (Ret.) as the speaker.

b. On 4 February 1980, LTJG [REDACTED] became the first female aviator to carrier qualify on a Pacific Fleet carrier. She did so onboard USS RANGER (CV-61) in a C-1A aircraft.

c. In April the wardroom conducted a Dining In with VADM WATKINS Chief of Naval Personnel as the honored guest.

d. Commander, Naval Air Forces, Pacific tasked VRC-30 with aircrew training and operation of NAS North Island's two UC-12B aircraft which arrived in March and October.

e. The squadron logged more than 48,000 accident-free hours over a five year period and was awarded the CNO Aviation Safety Award in March for CY 1979.

f. VRC-30 demonstrated flexibility and emergency airlift capabilities when it was tasked with the medical evacuation of two sailors from Acapulco to San Diego on 18 April 1980.

g. Forty squadron personnel received CPR instruction during July.

h. Squadron manning dropped from 93% in January to 72% in August.

i. A Squadron Manpower Document survey was conducted in October.

j. In November, the wardroom conducted a Dining Out with RADM WILLIAMS COMASWWINGPAC as honored guest.

k. A Command Inspection of VRC-30 was conducted December 9-11.

l. AD1 [REDACTED], was named VRC-30 Sailor of the Year.

m. VRC-30 flew 8,127 passengers and 177,049 lbs. of cargo during 1980.

8. Fleet Logistics Support Squadron THREE ZERO looks forward to continuing its rapid, efficient and reliable service to the fleet while maintaining an impressive record of professionalism and response. "VRC-30 Service Land and Sea".

FLIGHT SUMMARY (1980)

FLIGHT HOURS

C-1A	2,338.8
CT-39E	1,269.0
CT-39G	1,312.6
UC-12B	<u>821.1</u>
	5,741.5 Total Flight Hours

FLIGHTS

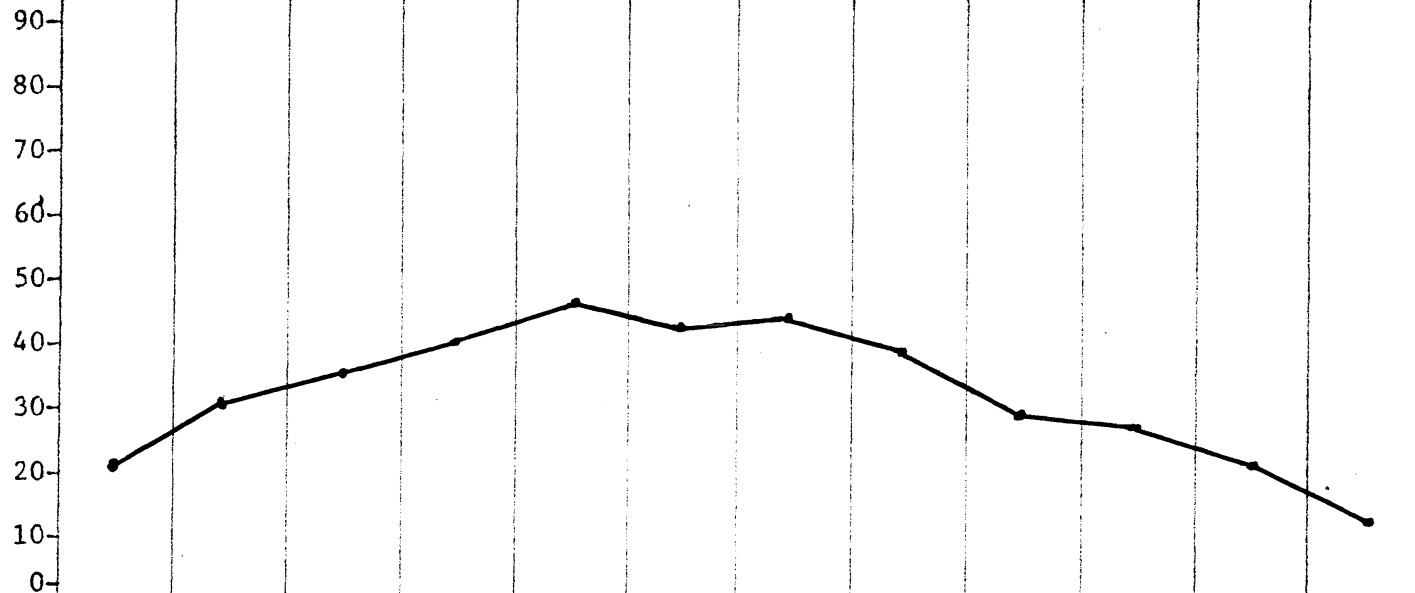
C-1A	1,822
CT-39E	813
CT-39G	<u>848</u>
	3,483 Total Flights

VRC-30 DETACHMENTS FOR 1980

<u>PURPOSE</u>	<u>LOCATION</u>	<u>DATES</u>
NATOPS Evaluation	Atsugi, Japan Barbers Point, Hawaii	1 Mar - 14 Mar
NATOPS Evaluation	Cubi Point, R. P.	1 Mar - 10 Mar
Air Show	Kingman, Arizona	15 Mar - 16 Mar
Sabreliner Symposium	St. Louis, MO	14 Apr - 18 Apr
Air Show	Las Vegas, Nevada	9 May - 12 May
NATOPS Evaluation	Whidbey Island, WA	3 Jun - 5 Jun
Carrier Qualification	Corpus Christi, TX	10 Aug - 17 Aug
NATOPS Evaluation	Barking Sands, HI	3 Sep - 6 Sep
Air Show	Dalles, Oregon	20 Sep - 23 Sep
Air Show	Paso Robles, CA	27 Sep - 28 Sep
Air Show	Albuquerque, NM	3 Oct - 6 Oct
Air Show	Point Mugu, CA	9 Oct - 12 Oct
Carrier Qualification	Alameda, CA	15 Oct - 17 Oct
Air Show	Palm Springs, CA	18 Oct - 19 Oct
NATOPS Evaluation	Bremerton, WA	21 Oct - 24 Oct
Air Show	Las Vegas, Nevada	24 Oct - 27 Oct
Carrier Qualification	Corpus Christi, TX	3 Nov - 7 Nov

AIRCRAFT UTILIZATION TREND CHART
 CNAP GEN-4790/7 (3-71) S/N 0190-LF-150-0060

UTILIZATION



PREVIOUS 12 MONTHS	JAN	FEB	MAR	APR	MAY	JUN	JUL	AUG	SEP	OCT	NOV	DEC
A/C UTILIZATION	20.5	30.2	34.7	39.8	45.5	41.4	41.8	38.3	29.1	28.7	22.5	12.2
TOTAL FLIGHT HOURS	137.5	211.6	211.4	239.0	273.4	242.6	242.6	225.9	177.2	189.3	137.3	80.8
TOTAL SORTIES	152	134	150	190	189	207	184	178	116	153	110	59
AVG. NUMBER OF A/C	6.7	7.0	6.1	6.0	6.0	6.6	5.8	5.9	6.1	6.6	6.1	6.6
ACTUAL NUMBER OF ACFT	7	7	7	6	6	7	6	6	7	7	7	7

COMMENTS:

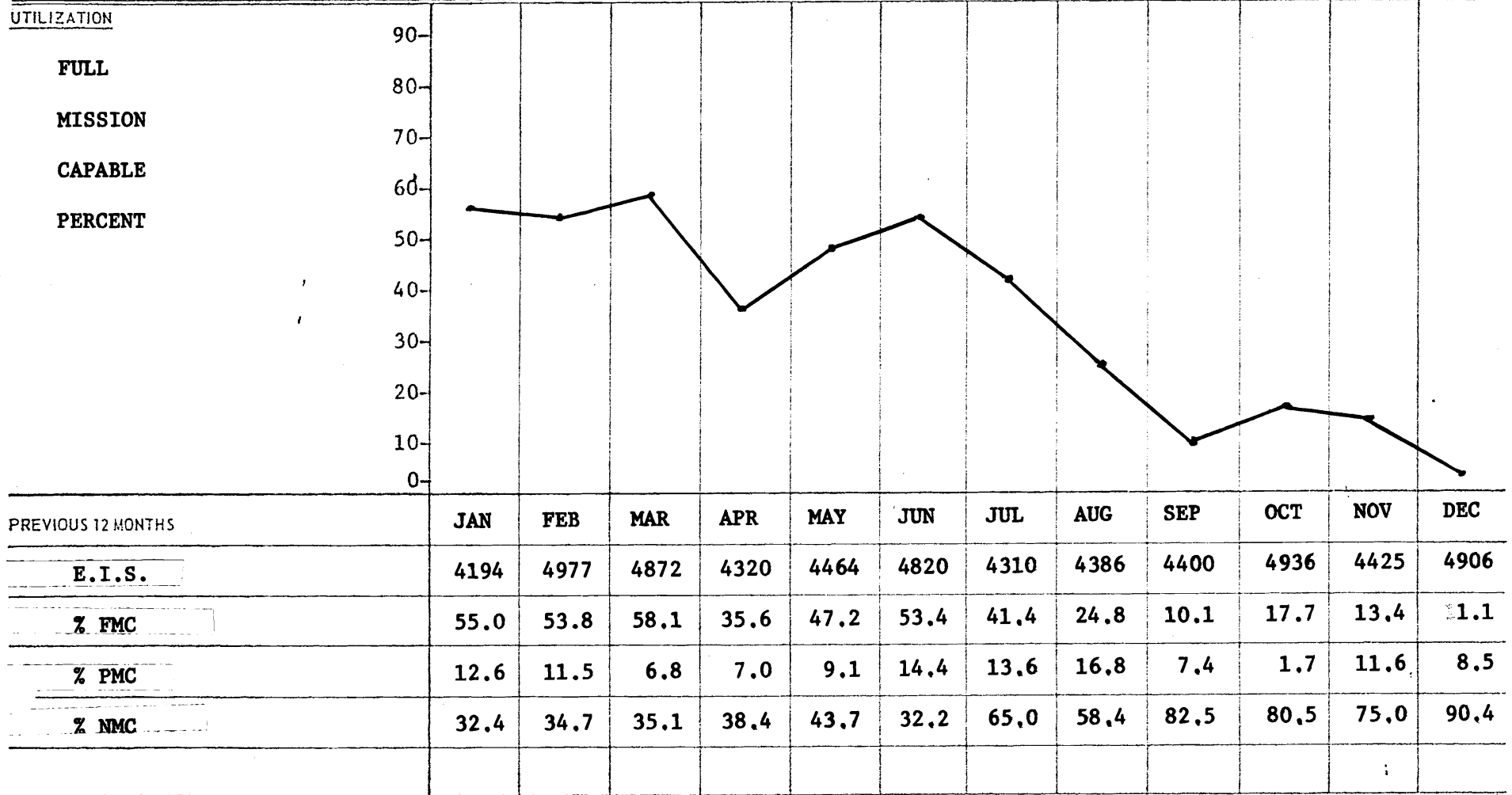
VRC-30
ACTIVITY

C-1A
TYPE A/C

DECEMBER 1980
MONTH-YEAR

SOURCE: ASD-3

AIRCRAFT UTILIZATION TREND CHART
 CNAP GEN-4790/7 (3-71) S/N 019D-LF-150-0060



COMMENTS:

VRC-30
ACTIVITY

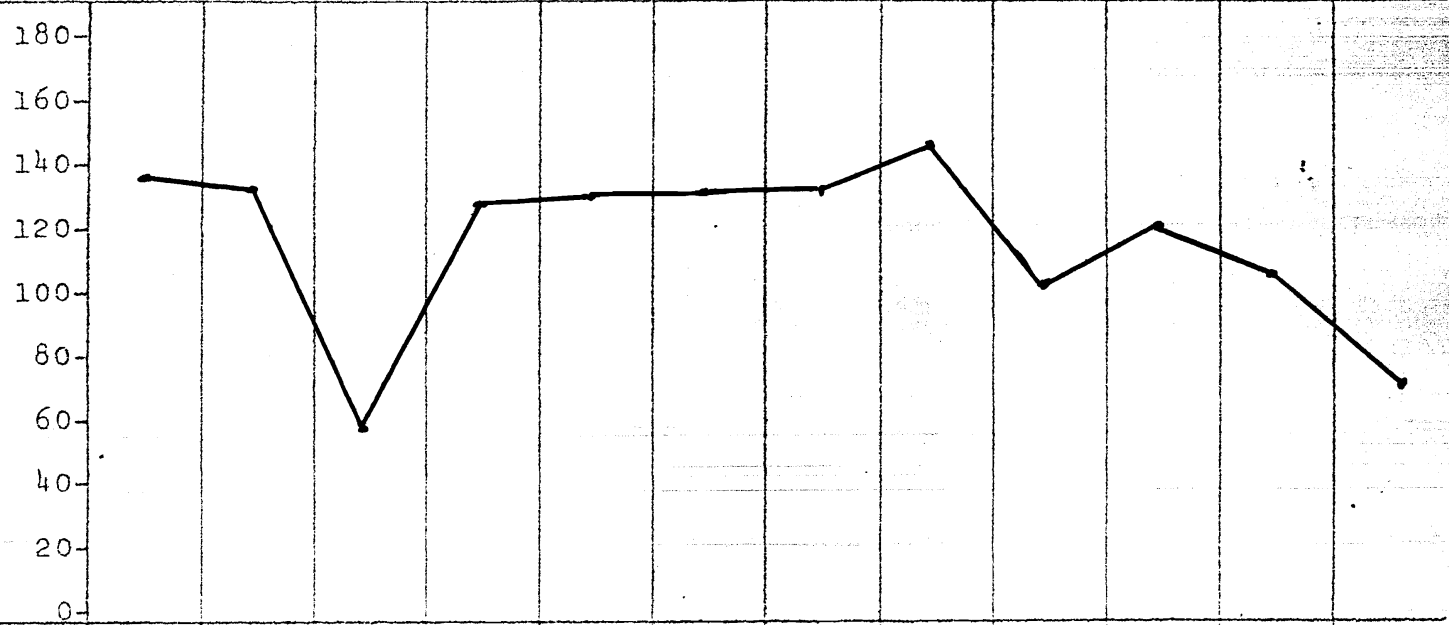
C-1A
TYPE A/C

DECEMBER 1980
MONTH-YEAR

SOURCE: ASD-3

AIRCRAFT UTILIZATION TREND CHART
 CNAP GEN-4790/7 (3-71) S/N 0150-LF-150-0060

UTILIZATION



PREVIOUS 12 MONTHS	JAN	FEB	MAR	APR	MAY	JUN	JUL	AUG	SEP	OCT	NOV	DEC
A/C UTILIZATION	135.7	133.4	57.2	128.5	130.5	131.3	131.9	146.3	102.7	118.6	105.6	69.4
TOTAL FLIGHT HOURS	135.7	133.4	57.2	128.5	130.5	131.3	131.9	131.7	102.7	118.6	105.6	55.5
TOTAL SORTIES	86	94	30	70	89	79	70	82	71	70	69	38
AVG. NUMBER OF A/C	1.0	1.0	1.0	1.0	1.0	1.0	1.0	0.9	1.0	1.0	1.0	0.8
ACTUAL NUMBER OF ACFT	1	1	1	1	1	1	1	1	1	1	1	1

COMMENTS:

VRC-30
ACTIVITY

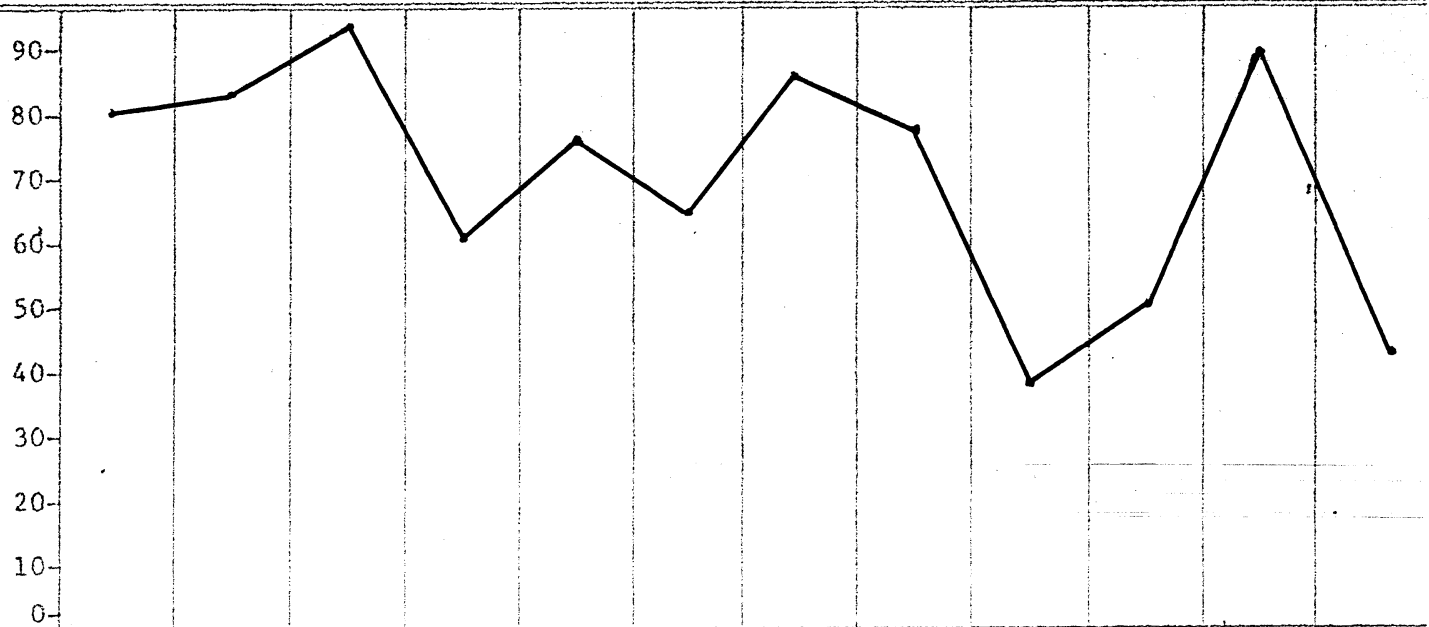
CT-39G
TYPE A/C

DECEMBER 1980
MONTH-YEAR

AIRCRAFT UTILIZATION TREND CHART
 CNAP GEN-4790/7 (3-71) S/N 0190-LF-150-0060

UTILIZATION

FULL
 MISSION
 CAPABLE
 PERCENT



PREVIOUS 12 MONTHS	JAN	FEB	MAR	APR	MAY	JUN	JUL	AUG	SEP	OCT	NOV	DEC
E. I. S.	744	696	744	720	744	720	704	707	720	744	720	632
% FMC	80.4	82.4	94.6	61.8	74.6	64.1	84.1	76.8	37.1	48.5	87.3	42.7
% PMC	1.9	0.0	0.0	0.0	1.3	28.3	4.1	13.8	41.7	12.0	0.0	9.2
% NMC	17.7	17.6	5.4	38.2	24.1	7.6	11.8	9.4	21.2	39.5	12.7	48.1

COMMENTS:

VRC-30

ACTIVITY

CT-39G

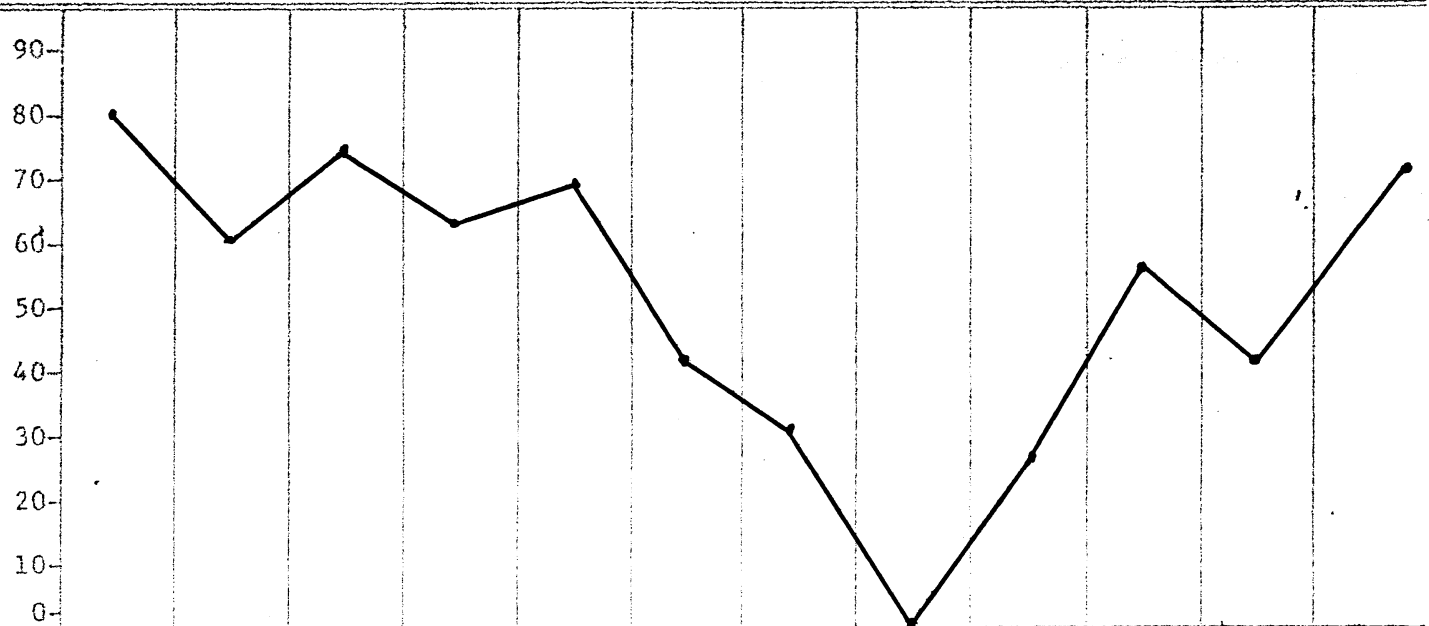
TYPE A/C

DECEMBER 1980

MONTH-YEAR

AIRCRAFT UTILIZATION TREND CHART
 OMAP GEN-4790/7 (3-71) S/N 0100-LF-100-0000

UTILIZATION
 FULL
 MISSION
 CAPABLE
 PERCENT



PREVIOUS 12 MONTHS

	JAN	FEB	MAR	APR	MAY	JUN	JUL	AUG	SEP	OCT	NOV	DEC
E. I. S.	744	762	744	780	744	1304	1488	1488	1440	779	547	744
% FMC	80.1	60.4	76.1	61.7	68.2	41.5	31.3	0.0	26.6	55.9	41.9	70.7
% PMC	0.8	6.7	6.4	10.7	3.0	3.3	21.3	34.0	10.9	1.2	0.0	0.1
% NMC	19.1	32.9	17.5	27.6	28.8	55.2	47.4	66.0	62.5	42.9	58.1	29.2

COMMENTS:

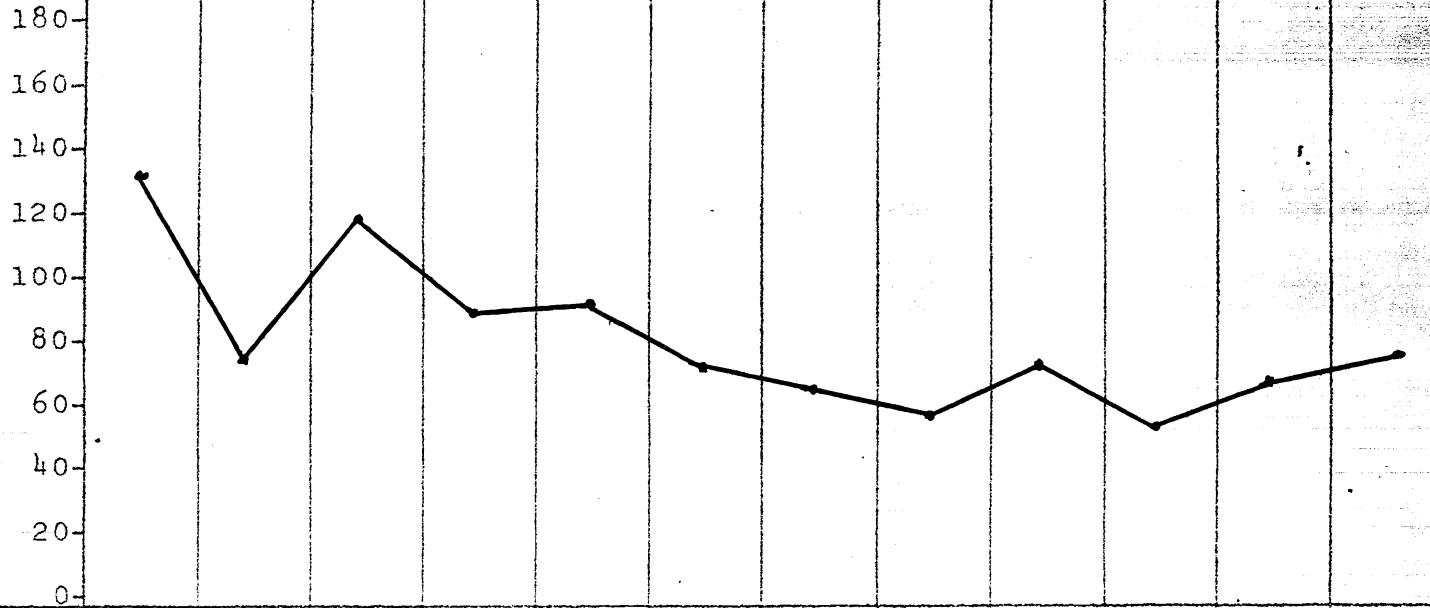
VRC-30
 ACTIVITY

CT-39E
 TYPE A/C

DECEMBER 1980
 MONTH-YEAR

AIRCRAFT UTILIZATION TREND CHART
 CRAP GEN-4790/7 (3-7) 5/11/80 G.L.F-150-0060

UTILIZATION



PREVIOUS 12 MONTHS	JAN	FEB	MAR	APR	MAY	JUN	JUL	AUG	SEP	OCT	NOV	DEC
A/C UTILIZATION	127.9	72.7	117.8	85.4	88.7	68.8	62.3	57.8	66.5	54.3	64.5	70.2
TOTAL FLIGHT HOURS	127.9	80.0	200.2	93.9	88.7	123.8	124.6	115.5	132.9	59.7	51.6	70.2
TOTAL SORTIES	86	57	118	51	56	77	84	75	83	39	41	46
AVG. NUMBER OF A/C	1.0	1.1	1.7	1.1	1.0	1.8	2.0	2.0	2.0	1.1	0.8	1.0
ACTUAL NUMBER OF ACFT	1	2	2	2	1	2	2	2	2	2	1	1

COMMENTS:

VRC-30

CT-39E

DECEMBER 1980

ACTIVITY

TYPE A/C

MONTH-YEAR

SOURCE: ASD-3