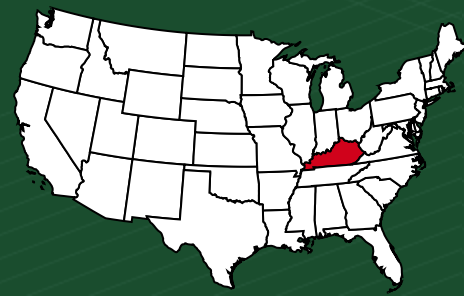




www.history.navy.mil

THE NAVAL HISTORY OF KENTUCKY



SHIPS



40+

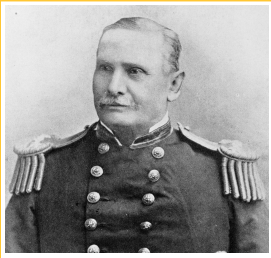
USS Kentucky (SSBN 737)

The Ohio-class ballistic-missile submarine is the second U.S. Navy ship named to honor the 15th state of the Union. The submarine was commissioned on July 13, 1991, at Groton, CT. Her motto is "Thoroughbred of the Fleet," highlighting the swiftness of the submarine.

At least 40 ships have been named after the state of Kentucky, its cities, places, and people. A few of those include:

USS Abraham Lincoln I (SSBN 602), 1961
 USS Abraham Lincoln II (CVN 72), 1989
 USS Blakely III (DE 1072), 1970
 USS Boone County (LST 389), 1942
 Covington I (Side-wheel Steamer), 1863
 USS Covington II (Id. No. 1409), 1917
 USS Covington III (PF 56), 1944
 Cumberland I (Frigate), 1842
 USS Daniel Boone (SSBN 629), 1964
 USS Earle B. Hall (APD 107), 1945
 USS Feland (APA 11), 1943
 USS Grant County (LST 1174), 1957
 USS Harlan County (LST 1196), 1972
 USS Henry Clay (SSBN 625), 1964
 USS Henry County II (LST 824), 1944
 USS Hickman County (LST 825), 1944
 USS Higgins (DDG 76), 1999
 USS Jouett I (Destroyer No. 41), 1912
 USS Jouett II (DD 396), 1939
 USS Jouett III (DLG 29), 1966
 Kentucky I (Battleship No. 6), 1900
 USS Kentucky II (SSBN 737), 1991
 Louisville I (Ironclad Centerwheel Gunboat), 1862
 USS Louisville III (CL 28), 1931
 USS Louisville IV (SSN 724), 1986
 USS Mayfield (PC 1196), 1943
 McKee I (TB 18), 1898
 USS McKee II (Destroyer No. 87), 1918
 USS McKee III (DD 575), 1943
 USS Mercer II (APB 39), 1945
 USS O'Bannon I (Destroyer No. 177), 1919
 USS O'Bannon II (DD 450), 1942
 USS Otter II (DE 210), 1944
 Paducah I (Gunboat No. 18), 1905
 USS Paducah II (YTB 758), 1961
 USS Pulaski County (LST 1088), 1945
 USS Ready II (PG 87), 1968
 USS Russell County (LST 1090), 1945
 USS Walter B. Cobb (APD 106), 1945
 USS Young II (DD 580), 1943

PEOPLE



James Edward Jouett
Rear Admiral

Born near Lexington, KY, Jouett commanded several ships during the Civil War and was severely injured during hand-to-hand combat with a Confederate commander. After the war, he commanded the North Atlantic Squadron and led the ships that forced the opening of the Isthmus of Panama. Jouett retired in 1890 and a special act of Congress granted him full pay for the remainder of his life due to his excellent service.



Dudley W. Morton
Commander

Born in Owensboro, KY, Morton graduated from the Naval Academy in 1930. He commanded the submarine USS Wahoo (SS 238) during World War II and was responsible for sinking 19 ships totaling 55,000 tons. Morton and his submarine were known as "The One-Boat Wolf Pack." In 1943, Wahoo was attacked by Japanese antisubmarine forces and sank off the coast of Japan. Morton received the Navy Cross, three gold stars, and the Army Distinguished Service Cross.



William J. Crowe
Admiral

Born in La Grange, KY, Crowe graduated from the Naval Academy in 1946. He served aboard multiple submarines, conducted the investigation on the treatment of the captured USS Pueblo crew, and advised the Vietnamese Riverine Force. He became the chairman of the Joint Chiefs of Staff in 1985 and thawed the Cold War through agreements with the chief of the Soviet General Staff. After retiring in 1989, Crowe served as the ambassador to the United Kingdom and taught at the Naval Academy.

PLACES



Did You Know...?

Hemp grown in Kentucky was used to create ropes for rigging on Navy ships.



Naval Ordnance Station Louisville

Naval Ordnance Station Louisville was commissioned in 1941 to design and manufacture ordnance for the U.S. Navy during World War II. Throughout the Cold War, the plant continued to provide materials and technology for weapons systems. The site is now operated by private contractors.

NOSC Louisville

The mission of Navy Operational Support Center (NOSC) Louisville is to generate mobilization readiness by providing administrative services, training support, and world class customer service to Reserve personnel in support of surge and operational requirements for the Navy, Marine Corps, and Joint Forces.

