

Project Name: Southern California Acoustic Range (SOAR)

Author: Don Wells

Organizations/People Involved:

FPO-1: CDR Stevenson, Bob Cox, Keith Cooper

UCT TWO: LCDR Pyles, UCT Two divers

SEACON

Date: 1984

Project Summary:

FPO-1, in support to the Naval Air Systems Command (NAVAIRSYSCOM), installed SSL and WQC systems and cable to provide a 100-square mile Anti-Submarine Warfare training range in 4000 feet of sea water west of San Clemente Island, California. SOAR was designed to provide accurate tracking of air, surface and submerged targets.

The overall program manager for the SOAR Project was Director, Range Instrumentation Division (AIR-630) of the Naval Air Systems Command. The Naval Underwater Systems Center (NUSC) was assigned as the Technical Direction Agent for the project. NUSC managed procurement of installable components and provided technical direction of the installation sites. FPO-1 managed the in-water portion supported by UCT TWO

UCT TWO utilized an LCU as a dive platform and it transited from Port Hueneme, where it was outfitted, to San Clemente Island. The team conducted an underwater survey of the inshore cable route, established range markers for use as visual references from sea, and began onshore trenching operations.

SEACON was towed via the Panama Canal to San Diego, where mobilization was accomplished. Training was conducted off Point Loma and SEACON transited to San Clemente Island.

After SEACON's arrival at San Clemente Island, it was positioned 1,200 feet off shore. A line was passed to UCT TWO and was pulled ashore to a pulling winch. As cable was paid out towards shore, UCT TWO tied floats to the cable. As it moved up the beach the SCI UCT TWO personnel removed the floats. As the last floats were removed SEACON moved seaward, laying cable toward the SSL site. Once onsite, the SSL was deployed. The WQC and its cable were installed in the same manner. UCT TWO conducted an underwater inspection to document the location of the cables at the shore end.

SEACON transited back to San Diego and the LCU to Port Hueneme for demobilization.

Project Report Link:

Project Execution Plan for the Installation of the SOCAL Acoustic Range (SOAR) – ADA168632

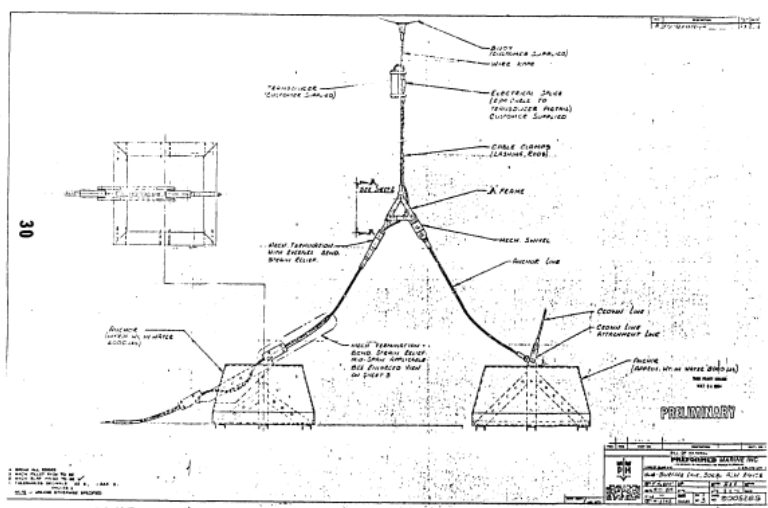
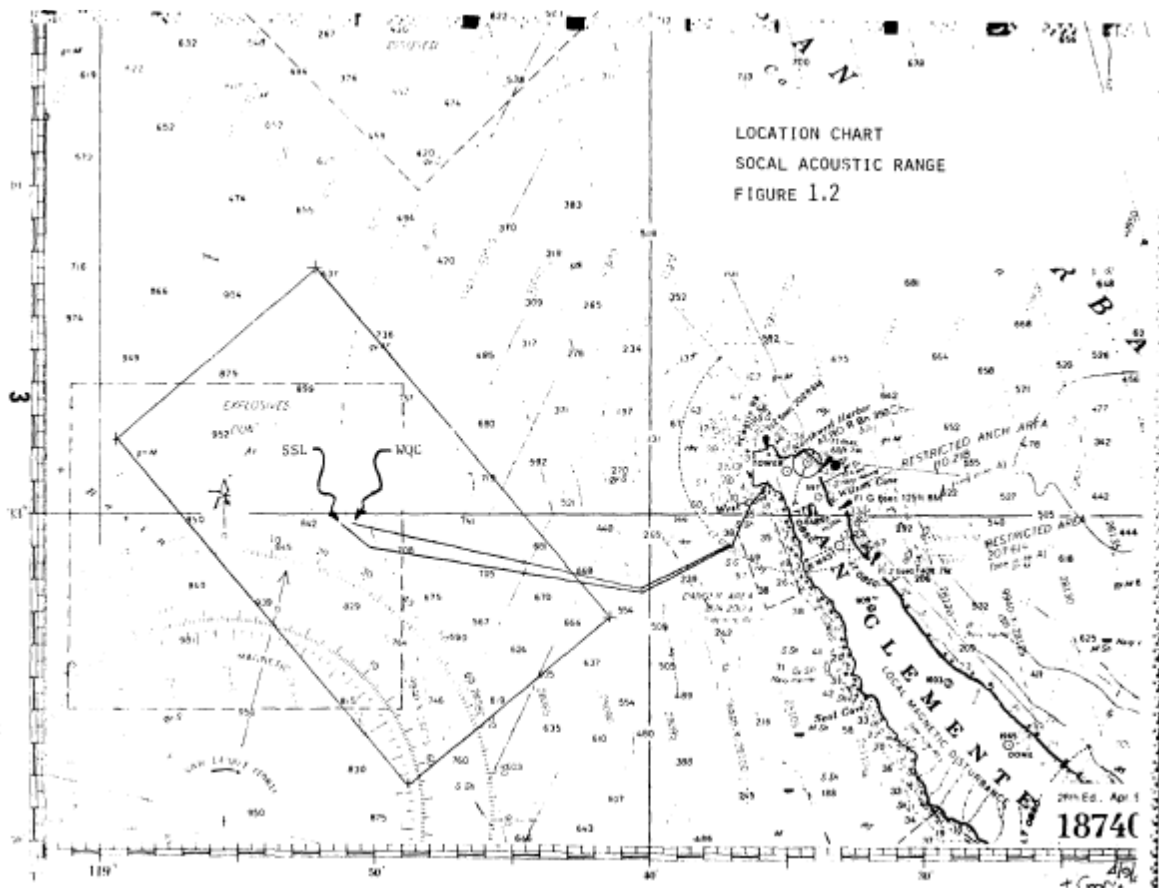


FIGURE 7.1 (A)
SSL ASSEMBLY

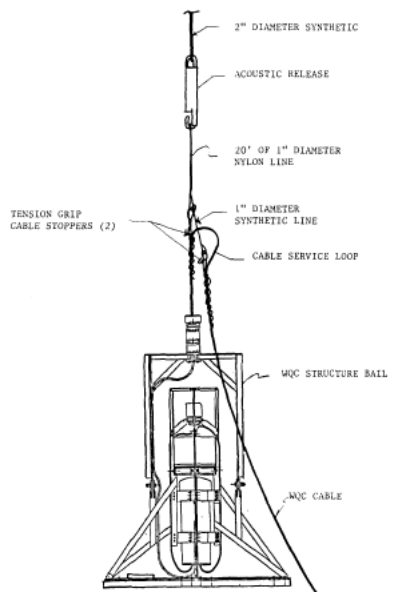


FIGURE 8.2
WJC RIGGED FOR OVERBOARDING