



797-169-

797.



MBUKE ISLS.



Admi

Bismarck

Longitude 1



Phoenix
 Bismarck Sea

Phoenix Islands

Archipelago
 Latitude 2°

Legend - NATIVE TRAILS - - - -

JOHNSTON ISLS.

LOU ISL.

ST. ANDREW ISL.

BALUAN ISL.

POM I.

DE FEDARE ISLANDS

SAN MIGUEL ISLS.

RAMBUTO IS.

TONGA IS.

PAK IS.

HORN IS.



George Davidson
 1845





DEDICATED
to the memory of
WILLIAM C. FLORENCE
Lieutenant (DC) USNR



FRED O. REED
Lieutenant, CEC, USNR
Officer-in-Charge

T H I S I S C B D 1 0 5 0

A very wise person once said, "Change is the only constant thing." And change—not in overseas locations, but in personnel and structure—has dogged CBD No. 1050 since the inception of its eventual component parts.

The first unit, which later was to become a major part of CBD No. 1050, was formed on January 28, 1944, as Special Draft No. 296, composed of six hundred odd men and with orders to leave Camp Peary on February 10, 1944. It did not leave on that date. Later it was reduced in size and became Special Draft No. 404. On April 1, 1944, this draft was commissioned as CBD No. 1051 with Lieut. Fred O. Reed as Officer-in-charge and Lieut.—then Lt. (jg)—Charles Strieff as Executive Officer. As an AERU (Automotive Equipment Repair Unit), it had a complement of 322 men and 10 officers.

Special Draft No. 405 was formed on March 14, 1944, and was commissioned on April 1, 1944, as CBD No. 1050, an ACEPD (Automotive and Construction Equipment Parts Depot), with nine officers and 253 men aboard. Lieut. Harry P. Bieber was Officer-in-Charge and Lieut. (jg) (then Ensign) Melvin J. Skinner, Executive Officer.

Both units left Camp Peary on April 3, 1944, and arrived at Camp Rousseau, Port Hueneme, California, five days later. On D-Day in Normandy (June 6, 1944), the units boarded a Dutch ship for their Island "X", which was to be Manus in the Admiralty Islands. After a "milkman's tour" of the South Pacific (Milne Bay, Oro Bay, Lae, Finschafen), the M. S. KOTA INTEN put into Seeadler Harbor on July 6, 1944. Two days later advance parties of each unit went ashore and all personnel followed on July 10.

ACEPD went to live in the ABCD area, and most of its men worked in that depot. AERU moved into the Detachment's present area and began immediate construction (after clearing the jungle) of the living area and shop area. With some little aid from other Seabees on the shop area, both areas were ready for full scale operation on October 15th. However, the living area had been in use for some time prior to that date.

Before beginning full scale operations, the two units were put under one command. Lieut. John C. W.

Carroll became Officer-in-Charge and Lieut. Reed, Executive Officer; but each detachment maintained its separate identity and records. Lieut. Carroll was detached on December 16, 1944, and Lieut. Reed became OinC, with Lieut. Strieff as Executive Officer.

Work outlined for AERU made additional personnel necessary. To this end, Casual Draft No. 2492 was formed at Camp Parks on November 15th and embarked for Manus on December 15, 1944, aboard another Dutch ship—M. S. TJISADANE. This draft of seven officers and 277 men under the direction of Lt. (jg) T. W. Zimmerman arrived 24 days later.

Orders, dated June 11, 1945, combined CBD No. 1050 and CBD No. 1051 into one unit—CBD No. 1050. No change was made in officer personnel.

Casual Draft No. 2711, a supplemental draft for CBD No. 1050, was formed at Port Hueneme on April 11, 1945, with Lieut. J. H. Keller in charge. 23 days after leaving the States, it arrived on Manus on August 31, 1945, aboard the S. S. HORACE GREELEY.

These were not the only changes. Officers and men were transferred in and out for a great variety of reasons. But most important, is the fact that the activity functioned as a well integrated unit and more than achieved the goals set for it; so well, in fact, that Officers-in-Charge of similar units about to go into operation visited CBD No. 1050 to gain "know-how."

It may be difficult for some to envision the value of this detachment's achievements. Only expert economists, working for months, could figure the ultimate amount of money, man hours, shipping space, and raw and finished materials which were saved by work done, or parts furnished, by CBD No. 1050.

Now the last change—and by far the most important to all of us right now—is about to take place: that of being a civilian once again. Before that comes to pass, I would like to say this to you: You have done well the jobs assigned to you; it has been a pleasure to have had the privilege of serving with you; and I am confident that whatever changes the future may hold you will always be what you have already proven yourselves to be—the kind of citizens that have made our Nation great.

Manus Island

24 September, 1945.





J. H. KELLER
Lieutenant, CEC, USNR
Executive Officer
August 31, 1945 to September 24, 1945
Officer-in-Charge
September 25, 1945

CHARLES STRIEFF
Lieutenant, CEC, USNR
Executive Officer





J. C. W. CARROLL
Lieutenant, CEC, USNR
Officer-in-Charge CBD 1050 & 1051
November 8, 1944 to December 16, 1944

H. P. BIEBER
Lieutenant, CEC, USNR
Officer-in-Charge CBD 1050
April 1, 1944 to November 8, 1944



OFFICERS



E. P. WHITE



V. K. THORNE



A. C. FRANK



B. E. JOHNSON



H. E. PETERSEN



T. W. ZIMMERMAN



M. J. FODRIN



A. P. CONGER



M. J. SKINNER



E. J. BLAINE, JR.

OFFICERS



H. J. NIEMI



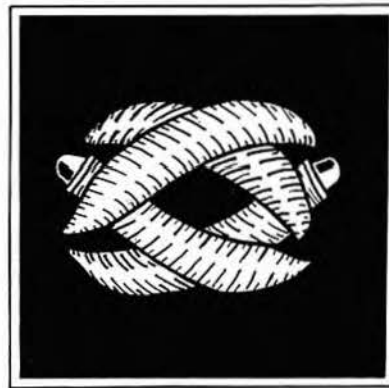
C. V. NORTHRUP



W. B. JONES



F. GIUSTO



B. V. SELF



G. A. KIRKBRIDE



L. M. STEWART



C. B. DUNN, JR.



G. D. THORNE



N. H. PATTON

CHIEFS



A. C. BAILEY

C. T. BARRETT

W. BRECKLING

G. S. CAMP

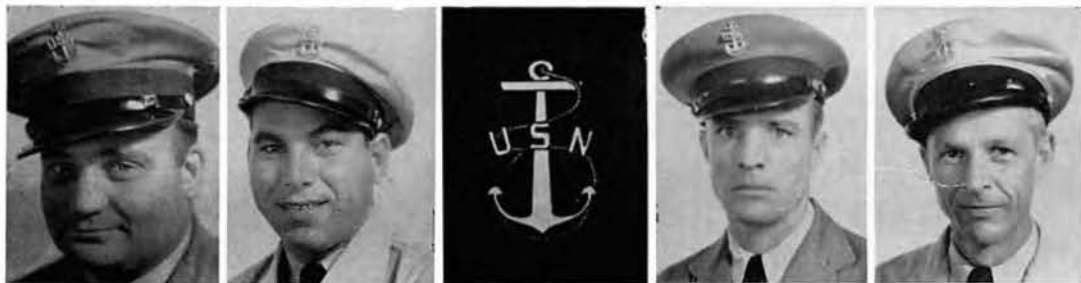


E. F. CHRISTIAN

E. J. COULSON

J. R. CROFT

T. L. ELY



D. N. GAMELIN

F. GOLAD

P. F. HAACK

R. L. HAGGERTY



H. D. HAMILTON

L. E. HARING

R. E. HINES

R. E. HOLMES

O. D. HUSTED



L. M. KELLEY

F. KLEIN

R. F. KOCH

W. LEARY

CHIEFS



D. T. LENTZ

E. L. MARTEL

F. MEDEIROS

L. F. MILLER



H. MURRAY

M. D. PAYNE

J. PETRAK

E. H. PUTZ

F. G. QUEIROLO



H. M. RIDER

A. R. ROGERS

E. F. SAUNDERS

H. L. SCOTT



J. G. SHINN

L. E. SMITH

R. M. STEVENS

W. S. STUMBAUGH



C. C. TERNAN

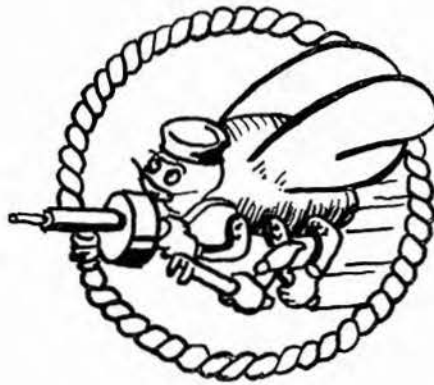
H. K. TUCKER

F. J. UHLE

G. D. WILLIAMS

R. T. WILSON

THE MATES



H. M. AASEBY



E. E. ABBOTT



L. W. ABITZ



L. L. ALDRICH



D. H. ALEXANDER



A. ALKONIS



W. C. ALLEN



W. L. ALMOS



B. J. ALSUP



A. J. ANDERSON



THE MATES



B. ANDERSON E. R. ANDERSON A. W. ANSELMO F. M. APPELT F. ARMSTRONG



G. J. ARSENAULT F. D. ASHBY A. W. ASHTON H. B. ATELLS H. L. AUNGST



D. R. BAREL P. BACHKE J. J. BADANISH A. M. BAILEY E. W. BALL



E. T. BARBER F. M. BARKER J. B. BARKER A. C. BARLOW J. T. BARRIE



L. F. BAUMAN H. D. BEATY C. W. BELL R. W. BELL R. M. BENETZ



THE MATES



A. D. BENNETT



N. J. BENNETT



M. A. BERGLAND



J. A. BERNARD



R. A. BERNIER



B. C. BETHEL



C. J. BINNEY



P. P. BIZAL



F. F. BLACKBURN



F. N. BLACKINTON



R. F. BLACKLEY



R. H. BLEVINS



F. J. BLODER, JR.



W. P. BLONDO



J. E. BOLAND



W. C. BOLES



A. B. BOLICK



H. L. W. BOLL



O. C. BOLTON



L. D. BOND



L. BOOTHE



J. B. BOWDEN



G. BOYCE



D. H. BRADLEY



THE MATES



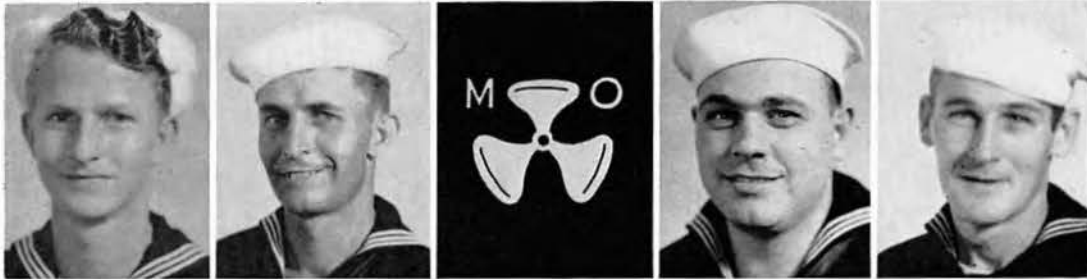
J. N. BRADLEY

Z. L. BRADLEY

J. R. BRAFORD

D. BRATTAIN

W. J. BREEDING



R. E. BREWER

L. BRIDGES

H. L. BRIGHT

R. W. BRINDLE



D. C. BROCK

L. J. BROCKMAN

F. R. BROHAN

H. BRONER

E. D. BRONSON



E. L. BROOKMAN

E. M. BROSHEARS

G. H. BROWN

H. F. BROWN

H. H. BROWN



J. N. BROWN

R. L. BROWN

E. F. BRUBAKER

A. F. BRUCKLER

R. J. BUESCHER



THE MATES



G. E. BURCHELL



T. L. BURCHFIELD



L. N. BURKS



L. BURNETT



B. J. BURROWS



R. O. BURT



R. E. BUSCHO



H. E. BUTLER



M. D. BUTLER



W. S. BUTLER



R. A. BYRNES



E. P. CAMELIO



A. R. CAMEROTTI



C. CAMPBELL



G. CAMPBELL



J. W. CAMPBELL



P. M. CAMPBELL



H. G. CANNEDY



J. A. CANNON



J. W. CANTY



F. W. CAPPELLA



L. W. CARLSON



L. A. CARLSON



M. O. CARLSON



THE MATES



M. CARRASCO

D. W. CARROLL

C. B. CARTER

J. D. CARTER

J. W. CARTER



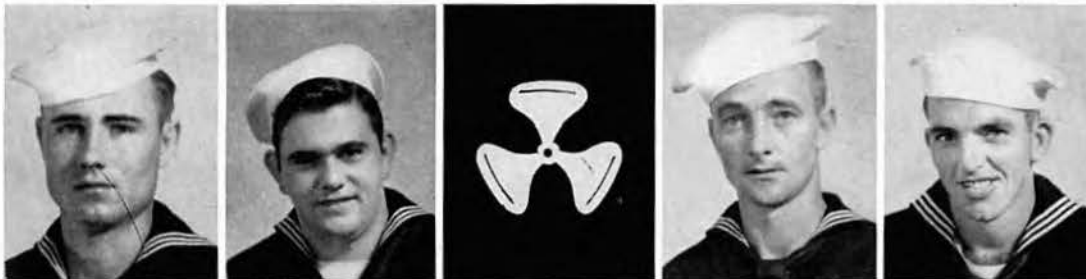
W. L. CASEY

R. E. CASTILLO

P. P. CEBULAK

M. E. CECE

W. E. CHAMBERS



C. M. CHANDLER

W. T. CHANEY

J. M. CHEEK

C. CHINN



P. M. CHIZ

L. J. CHRISTESON

D. T. CICHETTI

L. W. CLARK

L. T. CLARK



M. P. CLARK

J. G. CLARKE

E. H. CLEMONS

R. W. COCHRAN

L. C. COLE

THE MATES



E. S. COLLINS

R. P. COLLINS

G. V. COMBS

S. H. COMITZ

F. D. COMPTON



L. F. CONNER

R. L. CONNER

H. H. CONVERSE

C. N. COOK

R. J. COTE



J. C. COURTNEY

R. W. COVE

H. O. COX

L. G. CRADDOCK

V. F. CRAM



R. C. CROFT

W. E. CROPP



J. L. CROSS

L. J. CROSSMAN



L. C. CROUCH

W. M. CROW

J. S. CRUISE

E. R. CUIN

W. J. CULBERTSON

THE MATES



B. R. CURRIN

M. A. CURTIS

S. H. CURTIS

L. A. CUSANELLI

L. J. DAHLBERG



G. DALE

G. K. DANIELS

R. E. DAUGHERTY

G. C. DAVIDSON

O. J. DAVIDSON



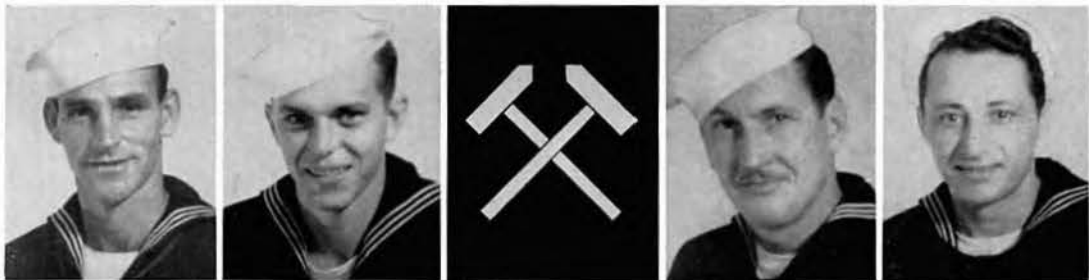
C. R. DAVIS

F. K. DAVIS

J. L. DAVIS

J. E. DAVIS

L. F. DAVIS



R. K. DAVIS

E. DAY

M. M. DE LAIR

S. P. DEL ROSSI



J. J. DEMPSEY

J. C. DE PRIEST

R. DESPRES

C. R. DEVEREAUX

J. DE YOUNG



THE MATES



J. H. DICKINSON



E. R. DILLON



R. V. DOLSON



R. A. DONAHUE



H. J. DONATHEN



R. J. DORIAN



J. W. DORRIS



E. R. DUNN



L. N. DUPPS



J. DURA



E. R. DZIUBINSKI



D. M. EAST



A. H. EASTMAN



G. W. EATON



G. L. EDDY



J. W. EDIGER



K. R. EDWARDS



J. J. EGAN



T. L. ELKINS



A. H. ELLARD



J. I. ELLER



H. B. EMERY



W. S. ENNIS



M. A. ENOS



THE MATES



L. C. EPLEY

S. V. ESPOSITO

E. P. EVANS

J. D. EVANS

L. FARLEY



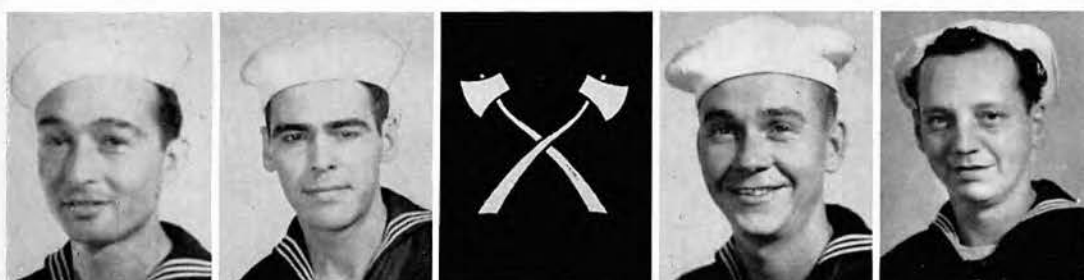
W. F. FARRELL

R. J. FARRO

M. J. FEIN

W. J. FEIRL

E. J. FELIX



R. F. FERNANDES

G. J. FERRY



G. W. FESSENDEN

M. H. FETTERMAN



J. E. FINKEL

R. E. FISK

L. G. FLEEMAN

R. J. FOLEY

C. K. FOSS



P. FRANCESCHINI

J. A. FRAWLEY

E. H. FRITZ

R. H. FRY

R. M. FRYE



THE MATES



F. H. FUQUA



J. L. GAGE



J. D. GARRETT



H. H. GARTISER



I. GASKILL



J. GAVIN



W. S. GEARY



W. F. GEORGE



G. F. GIBBS



E. J. GILHAM



V. GILL



J. H. GLASGOW



J. W. GOODIN



G. E. GOODLIN



J. H. GORDON



W. E. GORE



E. H. GOWER



L. M. GRAVES



A. J. GRIFFITH



J. L. R. GRIGGS



R. GUEVARA



J. D. GULL



A. M. GUM



G. W. GUNDERSON



THE MATES



G. H. HAHN



R. J. HALLMAN



C. HAMER



W. W. HAMILTON



G. T. HAMMOND



D. H. HARRIS



A. E. HART



A. S. HATCH



J. W. HATCHER



R. A. HAYES



W. M. HAYS



R. D. HEAD



G. M. HEDDEN



E. V. HEDRICK



N. C. HEDRICK



W. S. HEMPHILL



V. L. HESS



W. B. HILLMAN



A. J. HINSHILWOOD



H. J. HUNZE



V. L. HJELM



M. T. HOBBS



J. J. HOGAN



W. J. HOGAN



THE MATES



F. B. HOISINGTON



J. F. HOKE



B. H. HOOPER



L. C. HORNER



F. A. HORTON



L. R. HOULE



C. A. HUGHES



J. H. HUGHES



G. W. HULTZ



B. B. HUTTON



W. L. INZER



P. E. IRWIN



HAROLD H. JACKSON



HARRY H. JACKSON



S. V. JACKSON



J. W. JACOB



J. JANIK



A. JANOWCZYK



V. M. JENKINS



P. JENSEN



S. JIHOR



C. J. JOHN



C. R. JOHNSON



H. C. JOHNSON



THE MATES



O. W. JOHNSON

L. H. JOHNSTON

W. R. JONES

C. JORGENSEN

L. R. KAISER



J. C. KATA

J. L. KEENAN

F. L. KELLEY

F. C. KELLEY

W. L. KELLY



D. R. KINDRICKS

K. W. KEPLER



B. S. KERNS

I. C. KIER



M. L. KINARD

O. L. KINDER

W. R. KINGSLEY

M. KIPP

R. R. KNODEL



R. V. KOHUT

F. G. KOKEMOR

A. KORNIWICZ

F. KOWALSKI

A. V. KRAUSH



THE MATES



W. F. KRESOCK

J. B. KRULL

J. D. LADD

W. G. LAGER

G. R. LAIL



E. R. LAIRD

J. E. LAKE

H. J. LAMMY

H. D. LANGLEE

C. W. LANUM



H. C. LAUTENSCHLAGER

R. D. LEAMAN

A. R. LEATHERS

R. J. LEAVITT

M. C. LEWIS



J. D. LILLY

D. W. LINCOLN

R. W. LINDMIER

E. C. LINN

D. J. LITZ



H. B. LOWE

A. G. LUEDYKE

W. N. MABREY

J. F. MACKOWIAK

C. W. MANNING



THE MATES



J. T. MANNING

F. C. MARTIN

G. E. MARTIN

R. B. MARTIN

R. T. MASON



E. C. MAY

A. W. MAYO

A. C. MAYS

T. B. MCCOLLUM

H. W. MCCORMICK



M. C. MCCOY

D. C. MCCUNE

R. W. MCCUNE

R. R. MCDANIEL

J. D. MCENTIRE



J. L. MCWATERS

N. M. MEARS

W. A. MEARS

R. E. MERCHANTHOUSE

D. N. MERRIOTT



J. A. MIDKIFF

B. F. MILLER

C. L. MILLER

E. T. MILLER

W. E. MILLER



THE MATES



C. R. MILLS

A. J. MOE

W. R. MORAN

C. R. MORGAN

C. P. MORITZ



S. O. MORRISON

H. W. MOSS

J. F. MOSSMAN

J. C. MOUAT

H. L. MULLEN



J. NANASHE

R. E. NANCE

F. A. NASS

R. R. NEAL

H. C. NEEDHAM



C. W. NEES

E. I. NEWTON

J. H. NICHOLS

P. R. NICHOLS

A. A. NICHOLSON



R. A. NICKERSON

W. E. NICKS

W. L. NIXON

G. J. NORDSTROM

G. M. NOTTINGHAM



THE MATES



L. C. OCKER

P. OLIVER

R. B. OLIVER

L. Q. OLIVOTTI

E. O. OLMSTED



H. W. OLSEN

J. A. O'NEILL

C. E. ORRIS

W. C. QUIMET

H. E. OWENS



W. C. OWENS

Q. PAGE

J. D. PARILLO

A. E. PARKER

D. P. PARKER



D. W. PARKER

C. B. PARKHILL

J. S. PARSON

A. PATIN

B. G. PEARSON



G. PECK

W. W. PEET

R. F. PENNY

J. P. PEPPER

F. E. PERCY



THE MATES



A. J. PERODEAU

A. N. PERRY

C. A. PERRY

R. PERRY

W. J. PETERMAN



F. D. PETERSEN

J. A. PETRAS

F. L. PICCIRILLO

P. W. PINNIX

E. S. PLEASANTON



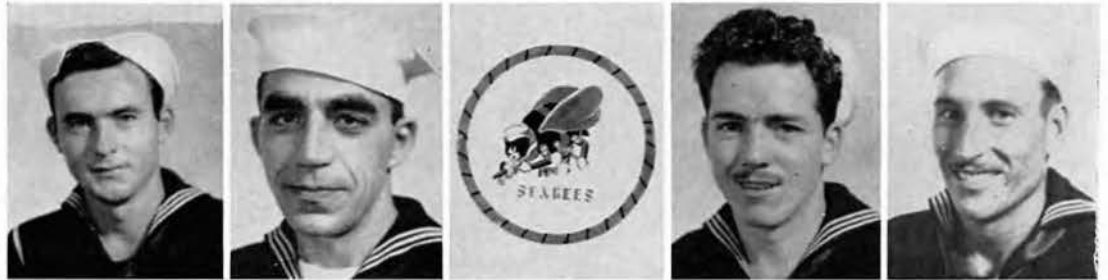
C. POLITOWSKI

N. POOLE

B. PORCHE

J. H. POWERS

W. K. PRIEST



A. A. PRYOR

W. A. PYNE



T. W. QUAINÉ

H. E. RAFFERTY



A. J. RAINONE

R. H. RAKESTRAW

B. F. RAND

M. E. RAYNOR

C. A. RAZZANO



THE MATES



G. W. REHAM



G. J. REDMOND



D. B. REID



R. W. REID



L. A. RENO



A. C. RICE



C. H. RICE



E. RICHARDS



H. P. RICHTER



J. D. RIGOLI



O. C. RINHART



R. W. RIPPERGER



H. F. RITO



M. G. RITTENHOUSE



R. R. ROACH



G. ROARK



G. W. ROATEN



R. E. ROBARE



C. C. ROBERSON



A. R. ROBERTS



H. L. ROBERTS



J. H. ROBERTSON



S. P. ROBERTSON



C. ROEMER



THE MATES



A. R. ROGERS

F. P. ROPER

V. M. ROTH

B. H. ROWLAND

N. T. RUSSELL



L. W. SAUER

T. H. SAUL

H. M. SAWYER

W. A. SCHATTGEN

S. J. SCHMIDT



G. W. SCHMUCKER

L. A. SCHROEDER

K. SCHUERGER

J. C. SHUTTEE



W. C. SCHWARTZ

V. SCOPEL

F. S. SEBOLT

J. E. SHAFFER

O. D. SHAW



P. R. SHEETS

J. E. SHELLHORN

L. J. SHINHOLSTER

R. N. SIEG

C. H. SIEGEL



THE MATES



E. W. SIKORSKI

C. W. SIMONS

L. A. SKALBERG

G. R. H. SMALL

F. E. SMILEY



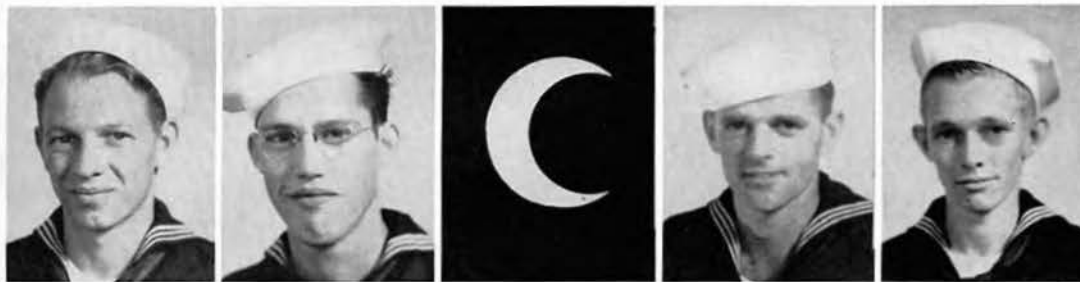
A. A. SMITH

D. C. SMITH

E. R. SMITH

G. J. SMITH

G. W. SMITH



G. T. SMITH

J. D. SMITH



O. K. SMITH

P. H. SMITH



P. P. SMITH

W. E. SMITH

E. I. SNAKENBERG

R. H. SNYDER

J. W. SORRELL



W. A. SOULE

J. A. SPENCE

C. SPENCER

M. M. SPERO

W. E. SPIDLE



THE MATES



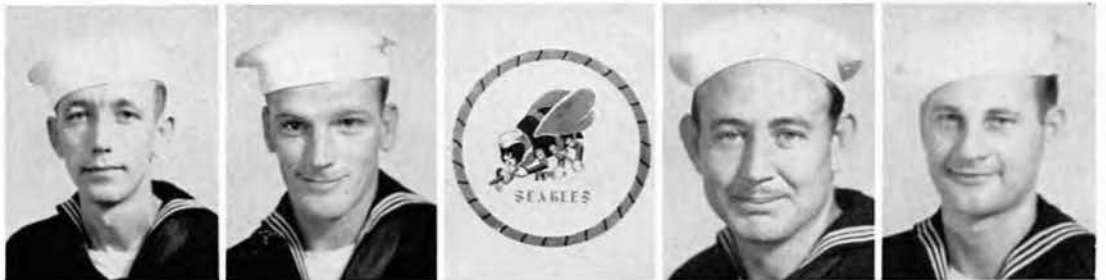
D. F. SPIES

B. F. SPLAWN

W. U. SPRINGFIELD

R. A. STANCER

M. E. STAPLER



P. S. STAPLETON

J. W. STEELE

W. F. STEGALL

G. E. STENSRUD



A. W. STEPHENS

J. V. STEPHENS

L. R. STERNER

A. G. STEVENS

E. E. STEVENS



H. M. STEWART

T. N. STOPPENBACH

E. W. STORY

R. G. STOUT

L. J. STREMANOS



G. STURIALE

G. D. SULLAWAY

B. W. SULLINGER

J. J. SULLIVAN

P. F. SULLIVAN



THE MATES



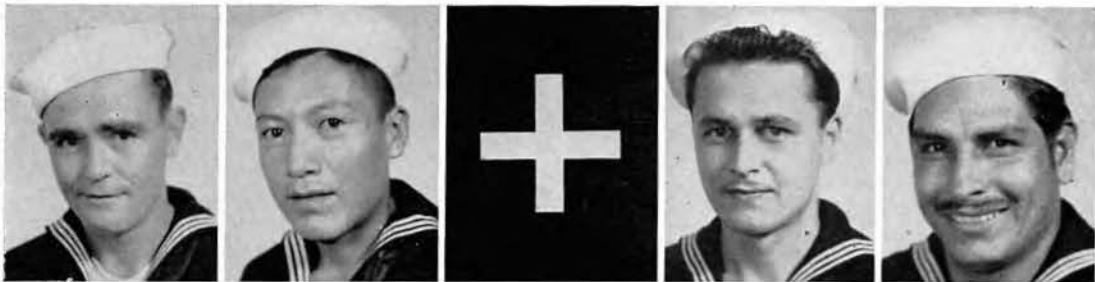
G. L. SWAIM

K. W. SWANSON

D. K. SWARTZ

J. T. SWINDALL

R. G. SWINDELL



R. K. SWITZER

D. H. SYLVESTER



J. B. SZCZOTKA

J. TALAVERA



E. D. TALBERT

A. J. TAORMINA

B. M. TAYLOR

N. TAYLOR

M. R. TEEL



H. Q. TENNANT

J. W. TERRY

J. J. THEROUX

A. A. THOMAS

J. THOMAS



L. B. THOMAS

R. J. THOMAS

R. O. THOMAS

W. L. THOMAS

P. THORN



THE MATES



A. TIEDEMANN

J. TIEDEMANN

G. O. TIFFANY

J. D. TOMASSI

J. A. TOMSIC



J. J. TOUREK

A. P. TOWNSEND

A. M. TRACEY

A. H. TREMBLE

W. J. TRIMBLE



H. TRISTER

M. G. TRIVETT



R. C. TROYAN

G. TRUESDEL



G. W. TUCKER

J. TURNBULL

D. D. TYLER

N. J. UNDERBERG

J. J. UNGER



H. D. USHER

K. G. VACZY

B. R. VAN NORDEN

A. L. VARNER

A. M. VARNER



THE MATES



V. J. VESTAL

G. W. VOGEL

L. B. VON BEHREN

A. C. WADE

C. R. WAID



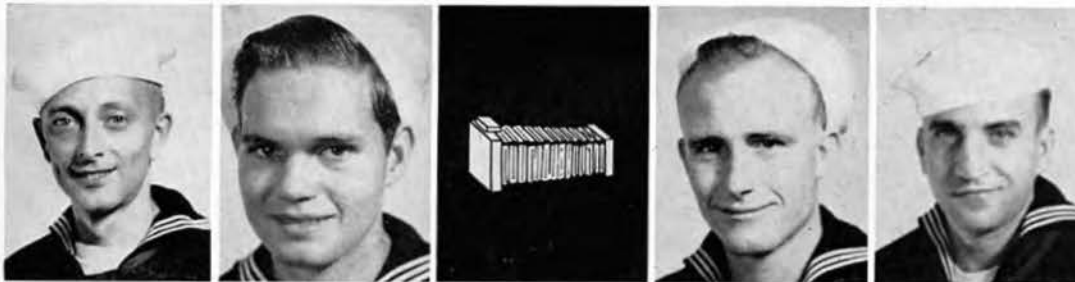
W. H. WAINSCOTT

J. F. WAJSZCZUK

J. M. WALKER

R. W. WALKER

W. J. WALKER



G. H. WALL

H. W. WALL



R. Y. WARREN

R. H. WASILK



H. C. WATKINS

J. M. WATTS

W. N. WEEDEN

J. H. WEEDMAN

T. A. WEESE



L. A. WEGNER

G. M. WEIGLE

G. A. WELCH

W. E. WENTZEL

C. R. WERT



THE MATES



R. L. WESTCOTT

C. B. WHITE

H. E. WHITE

J. L. WHITE

R. C. WHITE



R. C. WHITEMAN

J. R. WHITT

J. F. WIEDEMANN

R. A. WIGINGTON

H. S. WILCOX



J. L. WILCOX

A. E. WILLARD

E. L. WILLARD

B. H. WILLIAMS

C. M. WILLIAMS



C. R. WILLIAMS

C. E. WILLIAMS



E. L. WILLIAMS

E. C. WILLIAMS



L. P. WILLIAMS

W. L. WILLIAMS

T. R. WILSON

H. V. WINGO

S. G. WISE



THE MATES



B. C. WOLFORD

E. J. WOLOTKIEWICZ

C. M. WOOD

T. B. WOOD

H. J. C. WOODS



R. O. WOODWARD

V. J. WOOLEY

C. B. WORFORD

F. L. WORTH

L. M. WORTHINGTON



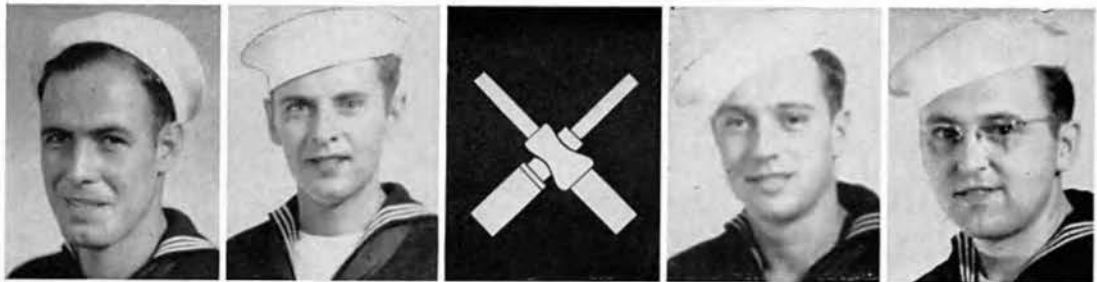
H. A. WOSNUM

E. C. WRIGHT

F. R. WRIGHT

G. H. WRIGHT

M. D. WRIGHT



S. T. WRIGHT

R. J. YOAKUM

T. F. YOSTEN

A. S. YOUNG



C. A. YOUNG

L. YOUNG

R. C. YOUNG

G. J. ZANMILLER

A. L. ZIMMERMAN



THE MATES



J. H. HEINZ



I. J. COWAN



E. E. ABBEN



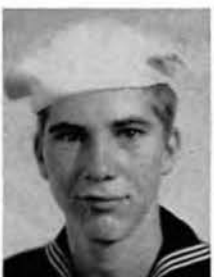
G. W. AMUNDSON



C. J. ANDERSON



A. M. BEADLE



L. L. BELGERI



D. E. BERGHIEH



W. L. BERNSTEIN



P. W. BOLENDER



D. R. BOST



H. W. BOWIE



R. T. BRAY



P. T. BRAZEE



L. B. BROWN



R. W. BRYCK



R. N. BURDICK



H. CARLSON



D. J. CHRISTENSEN



W. C. CODY



J. R. CONVERY



C. M. FOCARETA



A. J. FRENCH



D. J. JACKIMOCZ



THE MATES



P. L. JENKINS

A. B. JUTRASH

G. R. KAY

M. W. KENNEDY

W. A. KENNETT



N. KOPUN

L. J. LANUNZIATA

W. C. MOORE

H. E. MORRISON

F. E. NICHOLSON



J. A. OLSON

M. V. OSBORNE

S. F. POWELL

G. PUGLICI

L. R. RENSHAW



W. Z. RICKETTS

J. F. ROSE

B. H. SAMS

J. B. SANSTROM

J. A. SAUNDERS



H. J. SCHICHEL

A. R. SEASTEDT

J. F. SEKELSKY

T. W. SIBERT

E. J. SIMINSKI



THE MATES



A. SPINELLI

L. W. STANSELL

J. S. SZEWC

D. W. VAN AULEN

E. G. WILSON

PERSONNEL TRANSFERRED FROM UNIT AFTER DEPARTURE FROM STATES

OFFICERS

BOWEN, Henry B.
DRAFFIN, Francis M.

DRISLER, John H.
HUNTER, Francis R.

KOMISAR, Paul S.
LINDSEY, John C.

PHIPPS, Marion S.

ENLISTED MEN

ALCARAZ, Raymond W.
ARCHAMBEAULT, Perley L.
ARMITAGE, John E.
AUSTER, John W.
AZEVEDO, George P.
BAIRD, Thomas W.
BAKER, Harland D.
BARASH, Samuel T.
BASS, Charles D.
BECKMAN, E. B.
BENDER, Willard H.
BENNETT, Harold D.
BERGAU, Charles A.
BIEZENSKI, William (n).
BILLINGSLEY, George M.
BLACKWELL, Virgil W.
BLICKENSBERGER, Wm. L.
BOUDREAUX, Chester J.
BOWIE, George F., Jr.
BRIDWELL, Eldwin G.
BRISCOE, Dwight L.
BROWN, Stanley F.
BURCHELL, Gilbert E.
BURGIN, Hartley A.
BURGOON, Walter U.
BURNS, Walter C.
BUTTS, Oral M.
CAGE, Everett E.
CAHOON, Leroy (n).
CARMICHAEL, Clarence E.
CARSWELL, Billie (n).
CAUFIELD, William Alvin.
CHESTER, James F.
CHICCINO, Hector H.
CHRISTENSEN, Valdemar (n).
CLOWERY, David A.
COLLINS, Cecil A.
CONDLEY, Hardin C.
CONNOR, James P.
COPSEY, Bert D.
CORONADO, Luis U.
COSTELLO, Joseph W., Jr.
COTE, Edmond L.
CRON, Douglas C.
DAVIS, Charles L.
DAVIS, Floyd A.
DAVIS, Rowan L.
DEWEY, Joseph F.
DIAZ, Mike K.
DI CARLO, Ernest J.
DONNELLY, Joseph B.
DRAKE, Samuel A.
DRISCOLL, James A.
EDWARDS, Nicholas Y.
EVERHARDT, Gerald R.
FABERMAN, Harry (N.)
FARNSWORTH, Carl C.
FARON, Matthew J.

FAVERS, George P.
FITZPATRICK, E. E.
FITZPATRICK, Thomas J.
FOSTER, Samuel C.
FRANK, William (n).
FRANS, John E.
FRENCH, Vernon C.
FRENCH, William P.
FRIGON, Eugene P.
FRISSELL, Sidney S.
GILLES, Edward L.
GOODMAN, David L.
GORDON, Oral E.
GRANGE, Wallace B.
GREENWALD, H. S.
GUNDERSON, Gordie L.
HAHN, Paul J.
HAMILTON, Homer C.
HARRISON, Lewis O.
HARTFORD, Morgan H.
HASKELL, J. H.
HAVEN, Clayton E.
HEMENWAY, Arthur M.
HERBERT, Richard L.
HEWSON, Howard S.
HOFFMAN, George E., Jr.
HOLLOM, James C.
HOLMES, John H.
HOLMES, Joseph W.
HOOVER, Eric J.
HOWELL, James W.
HUMBERT, Johnny B.
IVERSON, E. O.
JACKSON, Franklin P.
JAMES, Victor A.
JENKINS, William E.
JOHNSON, C. B.
JOHNSON, Harold W.
JUMP, Samuel E.
KEARNEY, Cyril A.
KELLY, Charles G.
KENNEDY, Robert R.
KEPLER, Lloyd M.
KIMPEL, Fred H.
KIPP, Stanley H.
KITCHELL, Nathaniel A.
KLEIN, Alfred J.
KLIMEK, Edward T.
KNIGHT, Chester A.
KOLB, Kenneth F.
KUNTZ, Arthur B.
LASHER, Harold G.
LEE, Henry A.
LEONG, Walter.
LIVINGSTON, Herbert A.
LYMAN, Russell S.
MABRY, Hamilton S., Jr.

MacDONALD, Joseph D.
MADDOCK, John "E".
MAGUIRE, Cornelius J.
MARKS, Francis W.
MARTELL, Albert O.
MAUGHAN, Ralph W.
McALEXANDER, Lowell O.
McCLURE, Cecil S.
McCLURE, Rex (n).
McDANIEL, Payton, (n).
MENDEL, Robert E.
MERRONE, Peter P.
MILLER, William W.
MOCCIA, Thomas A.
MOLES, Townsend W.
MOLINA, Michael V., Jr.
MOODY, Elsworth L.
MORAN, Charles W.
MORIARTY, John J.
MURPHY, W. D.
MYRON, David V. O.
NAGEL, Roy E.
NIEBLING, George J.
NOWALK, Joseph (n).
OATES, Fred M.
O'FARRELL, William K.
ONDRA, Charles, Jr., (n).
OWENS, Sam P., Jr.
PAVEY, Charles H.
PERRY, Elmer H.
PETERSON, John S.
PILLARD, Henry (n).
PIRTLE, George F.
PLAMONDON, Winston J.
RATCLIFF, Robert J.
RATTIGAN, Leo R.
RAWLINS, Chester E.
RAY, Berney B.
REAVIS, Lester W.
REYNOLDS, Nelson G.
RHEA, Telfar S.
RHODES, Glenn W.
RHODES, Hughie M.
RILEY, John D.
RIVERS, Bennett H.
ROBERTS, Henry E.
ROBERTSON, Herbert L.
ROLLINS, David C.
ROSE, Wesley A.
ROST, Louis F.
ROYAL, Samuel B.
RUDD, Harold E.
RUTHERFORD, Thomas (n).
RYAN, Thomas B.
SAFFO, Anthony (n).
SALERNO, Edward D.
SATTERWHITE, Richard P.

SCHAEFER, John J.
SCHRADER, Harold E.
SCRIMSHER, Garth A.
SELPH, Edmond C.
SEVERE, Charles E.
SHELL, Homer P.
SHEPHARD, John B.
SHERNCE, Harold (n).
SIMS, James E.
SIZEMORE, Charlie (n).
SLATON, Oscar L., Jr.
SLEVIN, Frank G.
SMITH, Bill (n).
SMITH, John (n).
SMITH, Ray M.
SMITH, Robert "E".
SMITH, Taylor M.
SMITH, William R.
SNIDER, Harry H.
SPICER, Willard H.
STERNARD, Harold (n).
STEVENS, Charles A.
STINE, Selmore F.
STOTT, Thomas C.
STRATMAN, Arthur A.
STRONG, R. B.
SULLIVAN, Martin (n).
SUMMERTON, Buster L.
SWEENEY, William O.
SWINFORD, Thomas O.
TAGARELLI, Nicky J.
TARRANT, Edward F.
TAYLOR, Clinton J.
TAYLOR, James L.
TILLER, Charles B., Jr.
TROUTMAN, Charles W.
TUCKER, Daniel L.
TURNER, Alfred L.
TYLER, Roy (n).
VALLELY, Frank P.
VESTAL, Marvin M.
VOGEL, John W.
WALKER, George R.
WALL, Reese J.
WALLACE, Basil C.
WEATHERMAN, Raymond C.
WEGZYN, J. J.
WELKE, Albert A.
WEST, Clarence M.
WIDMAYER, Russell H.
WIENCKEN, Albert E.
WILSON, George L.
WILSON, Leonard M.
WITTENMYER, Wayne B.
WOLFORD, Sidney M.
WOODRICH, Edward I.
ZINGALE, Joseph (n).



HISTORY OF THE ADMIRALTY ISLANDS

The Admiralty Islands, catapulted by World War II into a place of prominence for personnel of U. S. Naval Construction Battalion Detachment No. 1050, had a long but uninteresting history—so far as western civilization knew it—for more than 300 years preceding the outbreak of the global conflict.

Although they figured in a small way in World War I a quarter of a century earlier, the Admiralties attained no particular significance until the Japanese began expansion of their Pacific outposts early in 1942 close on the heels of Pearl Harbor. Then, within a period of about two years they passed from Allied hands to the Nipponese and back again in 1944 to become the site of one of the major forward bases Americans built on the road to Tokyo.

Discovered by Schouten, the Dutch navigator, in 1615 and named for the British Admiralty in 1767 by Cateret, the islands underwent no development until Germany set up sovereign rule as recently as 1884. Two German gunboats, the Seeadler and Hyane, sailed into the Bismarck Sea, named for the German ruler, in 1884 and until 1888 made surveys of the islands—Manus and the smaller atolls which flank it on all sides. Seeadler and Hyane harbors were named for the gunboats.

Then came missionaries and men interested in development of coconut plantations. Later coconut production was to become the principal commerce of the jungled islands that became the Southwest Pacific area where men of this and other units lived and worked for many months. The islands reportedly were explored fully for the first time in 1927.

In 1914, when the first World War flared in Europe, Australia seized the Admiralties without opposition—just as she was to give them up 28 years later. Then, at the peace conference following the end of World War I, in 1918, the islands were mandated to Australia by the League of Nations. Missionaries came from the continent down under. Coconut plantations covering thousands of acres were started. Some of the younger natives were schooled and learned to speak the English language.

And then came Pearl Harbor.

Approximately 50 white persons—30 of whom lived in the Lorengau area of Manus island—and some 15,000 natives of three tribes, inhabited the islands at the outbreak of the conflict. Unprepared to withstand the Japanese onslaught, the Australians destroyed their installations and withdrew, and on April 8, 1942, the Nipponese took possession unopposed. Their stay was short lived.

On Los Negros island the invaders built an air strip on a plantation operated by a Japanese named Momote. But outside the development of Momote field, the Nips did little in the way of building the islands into a major military establishment. Jungle paths just wide enough for a truck made up the highway system used by the Nipponese. Three-lane coral surfaced highways came to the islands soon after the Americans took over, thanks to the Seabees.

Troops of the famous and now motorized United States Army First Cavalry division, directed personally by General MacArthur, hit the beaches of Los Negros island at Hyane harbor on February 29, 1944, to open a brief but hot campaign to return the Admiralties to Allied control. Then came the Seabees to join the beach party. While the Cavalrymen battled onto the air strip, gradually pushing the enemy back, ingenious ConBat men set blades of dirt moving equipment at angles, hurriedly threw up a protective mound of coral to withstand an expected counter attack when darkness came. The attack came, and was repulsed, the Japs suffering 3,000 casualties in dead and wounded.

Several days of bitter fighting followed before the enemy remnants fled in defeat to the Lorengau sector of Manus island, and the Momote air strip became the property of the resurgent Americans. It was put into operation immediately.

Then the Americans landed successfully on Hauwei Island, a miniature atoll on the outer fringe of Seeadler harbor north of Lorengau which later became the site of numerous picnic outings, and on Butjo Luo, deep inside the harbor. On March 16, less than three

weeks after the initial landing on Los Negros, the Yanks swarmed onto Manus under protective covering of gunfire from Hauwei and Butjo Luo. The beachhead was at Lugos Mission, just west of Lorengau.

The Japanese made a brief stand in this sector. After four days of resistance they fled into the hills, breaking into small groups that still were being eliminated by U. S. patrols long after the huge naval base, on which construction started immediately following the counter-invasion, had begun operating.

It was estimated that the enemy garrison on the island at the time of the American invasion numbered approximately 4,800.

Commodore James E. Boak was placed in command of the naval base, which soon began carrying out its mission "to construct, operate and maintain, in a high degree of efficiency, a major Naval Base capable of service, supply and repair to the forces afloat, air forces and other Allied units and to make all facilities available to these forces to assist in attaining total victory." This was highlighted by the staging of the first Philippine landing on Leyte, 1,200 miles to the northwest, in October, 1944, and climaxed by the award of the Gold Star in lieu of the second Legion of Merit medal to Commodore Boak. All units stationed at the base were commended by the commodore for their part in the successful operations of the base.

Commodore C. F. Martin, who captained the battleship *Pennsylvania* through most of the war, succeeded Commodore Boak as commander of the Naval Base shortly before the Japanese capitulation.

The sprawling Admiralty Island base, the most forward of America's Southwest Pacific outposts when CBD No. 1050 and CBD No. 1051—later merged into one unit—landed early in July, 1944, lies virtually astride the equator at the northern edge of the Bismarck Sea. Only 120 miles from the equator, it is closer to that line than any major base constructed in the entire Pacific area during World War II.

Torrid days, cool and damp nights, and much rain were constant companions of the personnel of CBD No. 1050 during their stay at this remote outpost. Rainfall on the islands of the Admiralty group approximates 150 inches annually. There were few days devoid of rainfall.

Natives of the Admiralty Islands, of which there are three tribes, lived in comparative obscurity in the years preceding the coming of World War II.

People of one tribe, the Usiai, live inland in the jungled hills and still practice cannibalism. Little was seen of these head hunters by servicemen of the Allied nations stationed at the base, but other natives soon became commonplace. The Usiai people raise pigs and barter with the natives living in the coastal regions. They are small of stature despite their neck-clipping tendencies.

The Matankor tribe lives in the coastal areas and by comparison its people are stalwart, intelligent and industrious. They trade in sago, the palm plant whose leaves are cured for use in construction of native huts and whose trunk is used for food, and betelnut, a product of jungle trees which is the islanders' counterpart of hard liquor. Betelnut addicts are distinguishable by their darkened teeth.

The Manusor Pamalot tribe owns no lands, its families living in stilt-huts in the beach areas. The people of this tribe excel as seamen, as craftsmen and at fishing. They produce a lime substance taken from coral rock which is used by those who chew betelnut, and trade for root crops, sago and betelnut.

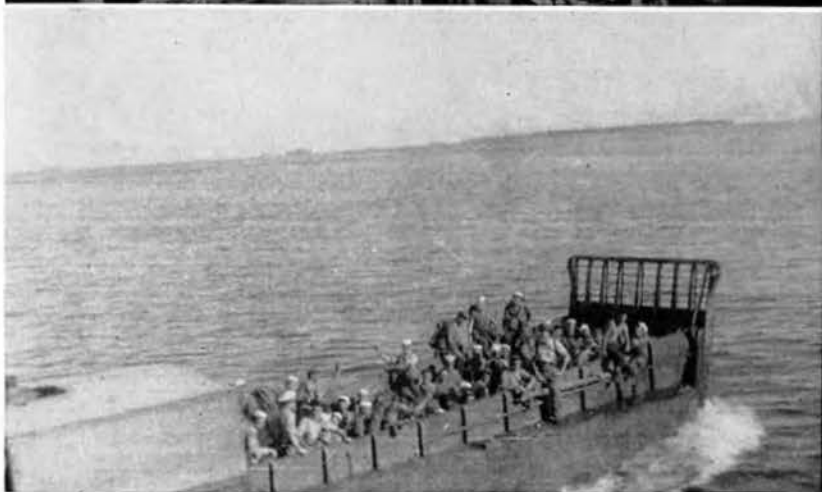
The islanders eat a number of fruits and other vegetation which grows untended on the islands, among them pineapples, small bananas, pawpaws and taro.

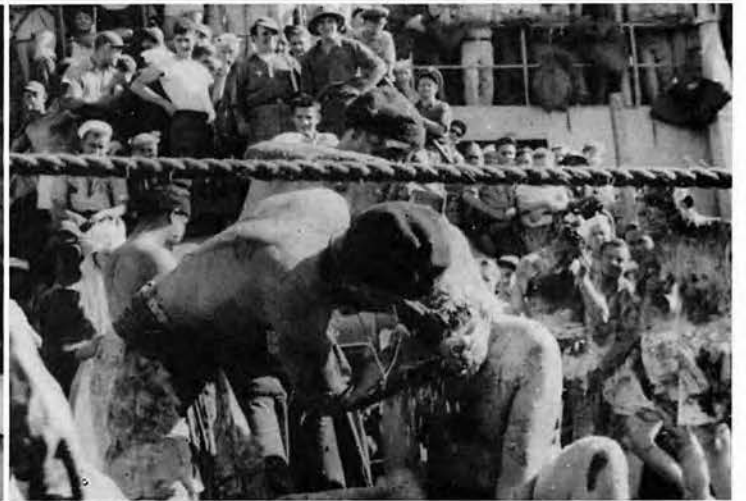
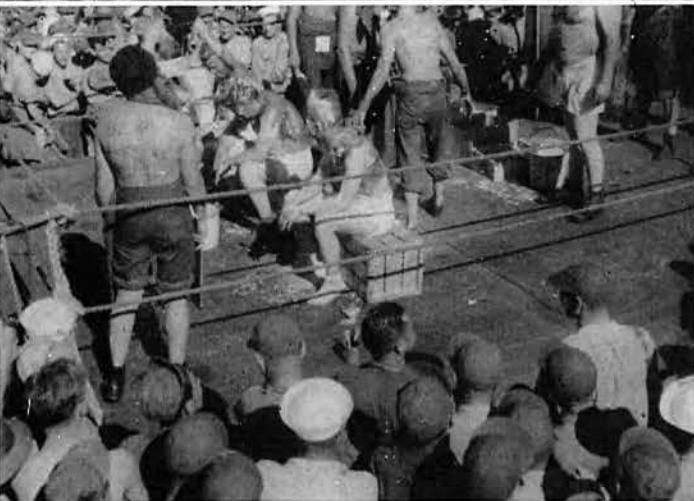
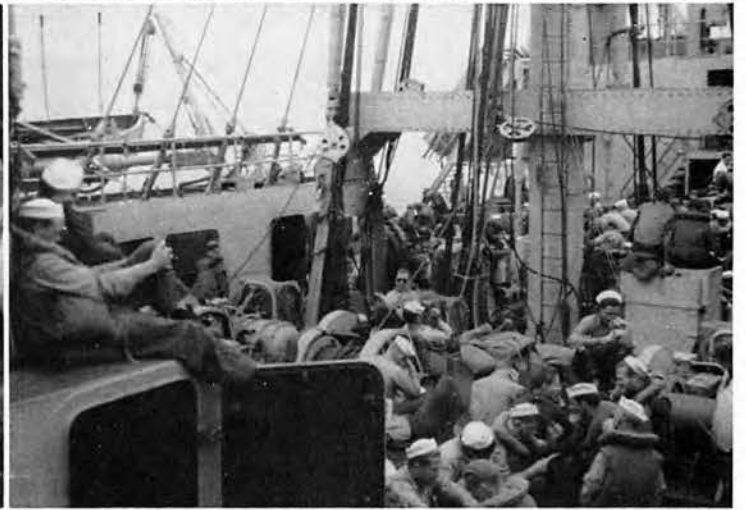
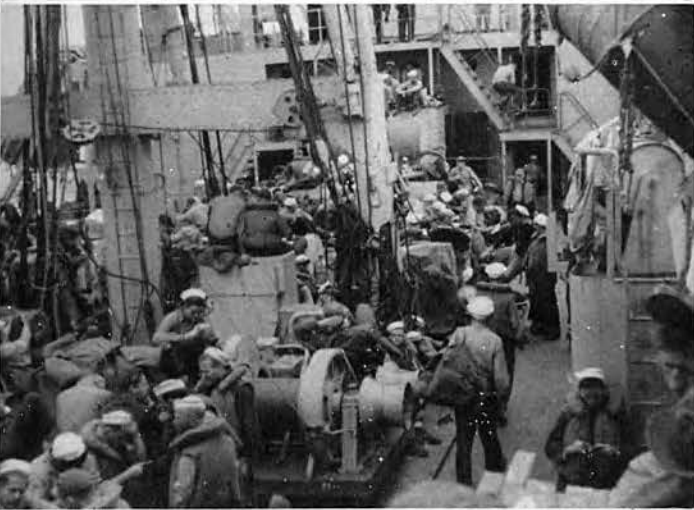
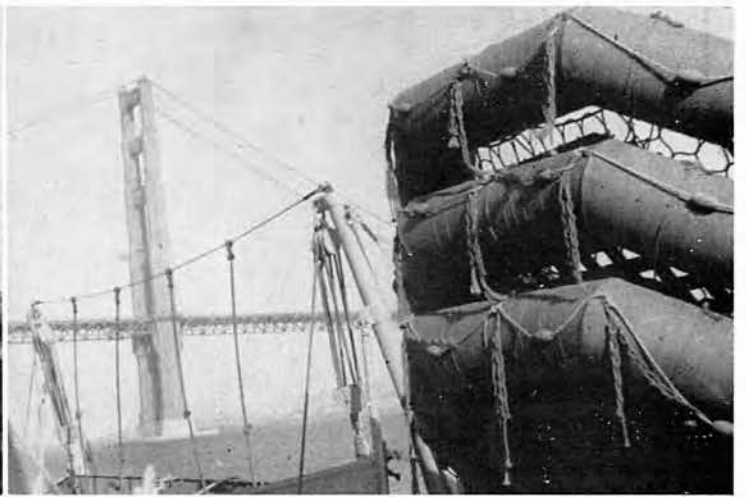
Native men—each known as Joe by American servicemen because they address all Americans as Joe—are shrewd traders. Both Joe and Mary, the native woman, are fond of American cigarets and American cloths with which they make laplaps and pulpuls. For these and numerous other things, they are eager to trade sea shells, grass skirts, wood carvings and other products of island craftsmanship provided the better end of the exchange is theirs.

The war interrupted the work of missionaries, who were educating the younger natives of the islands and teaching religion to many for the first time. The missionaries, chiefly Methodists, Lutherans, Seventh Day Adventists and Catholics, found it virtually impossible to continue their work during the Japanese occupation of the islands.



S H I P B O A R D







THE JAPS

These photographs, taken shortly after our arrival on the island, show some of the construction done by the Japs during their two years of occupation.

Left is pictured the better type Jap living quarters—probably for officers.



Right, Jap gun emplacement.



Left is a Jap dug-out. The boxes contained either rations or ammunition, most likely, "ammo."



The Japs used this coastal gun to help protect the entrance to Seadler Harbor. It and others on Hauwei were knocked out, overrun in quick order, and turned against the Japs holding out at Lorengau.

Right, Jap anti-aircraft gun.



Left, bridge built by Japs.





Jap pill box.



Entrance to Jap hospital.



Many lived in crude, exposed lean-to's like this . . .



. . . and ran to dugouts like this for protection and to fight from.



Jap hospital much as the Americans found it. Japs had partially destroyed and booby-trapped it.



Behind the tinned rations is the door to a Jap hut . . . probably built by forced native labor.

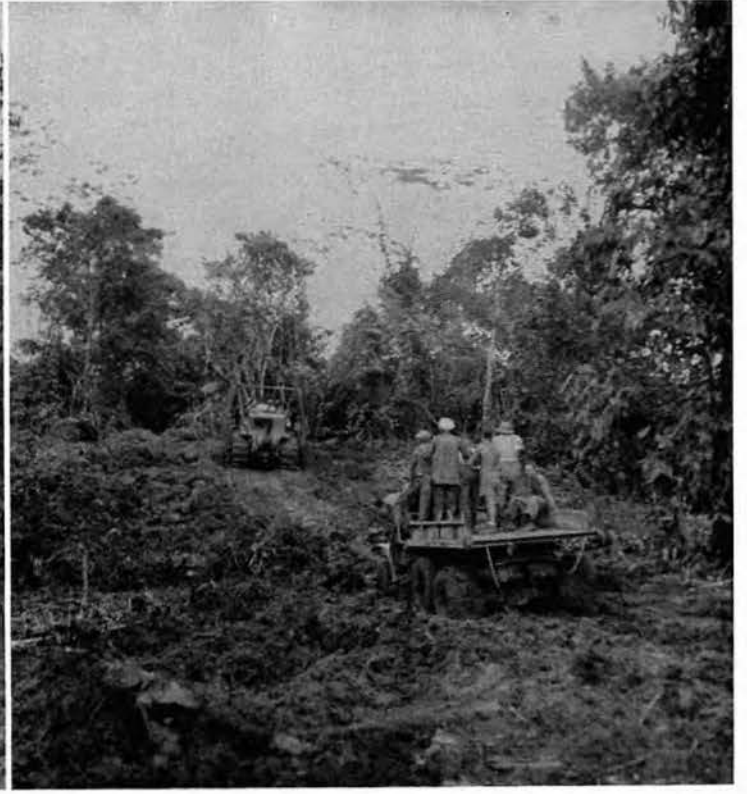


THE EARLY DAYS







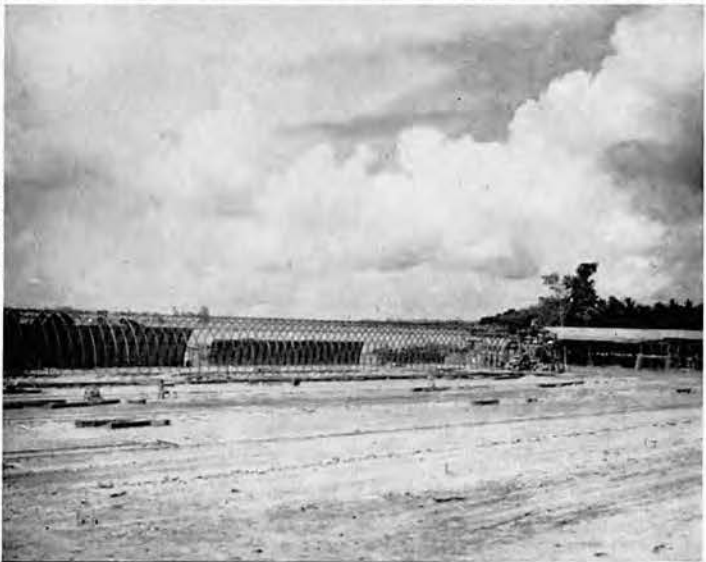
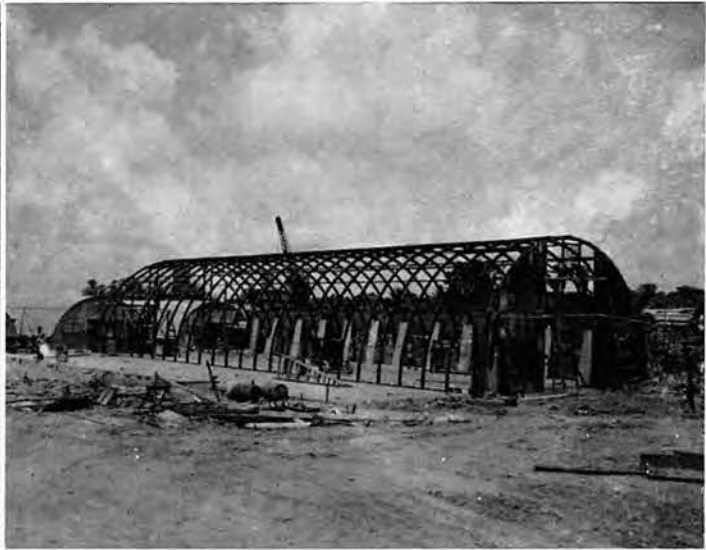
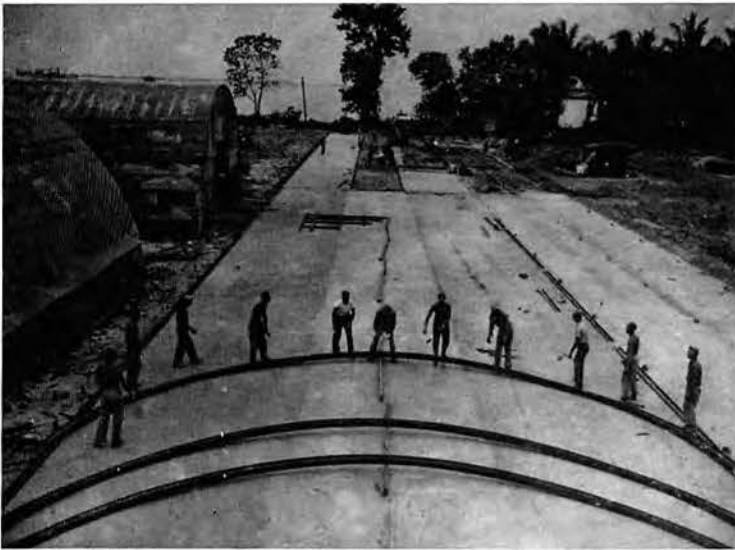


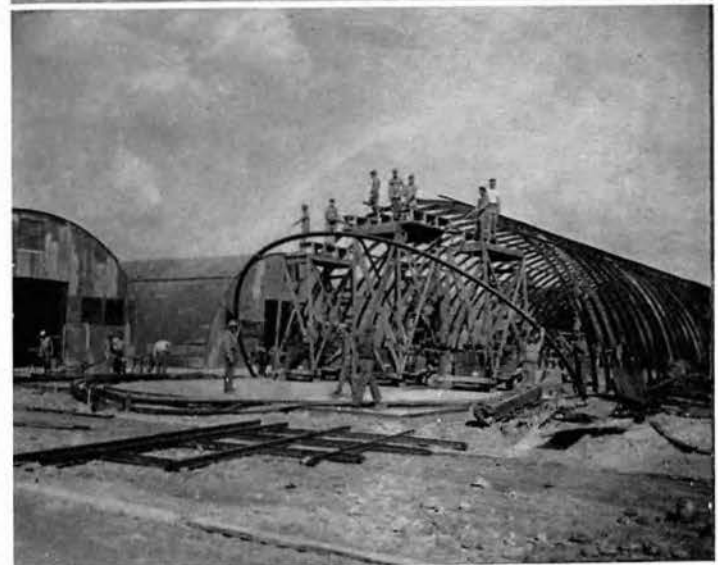




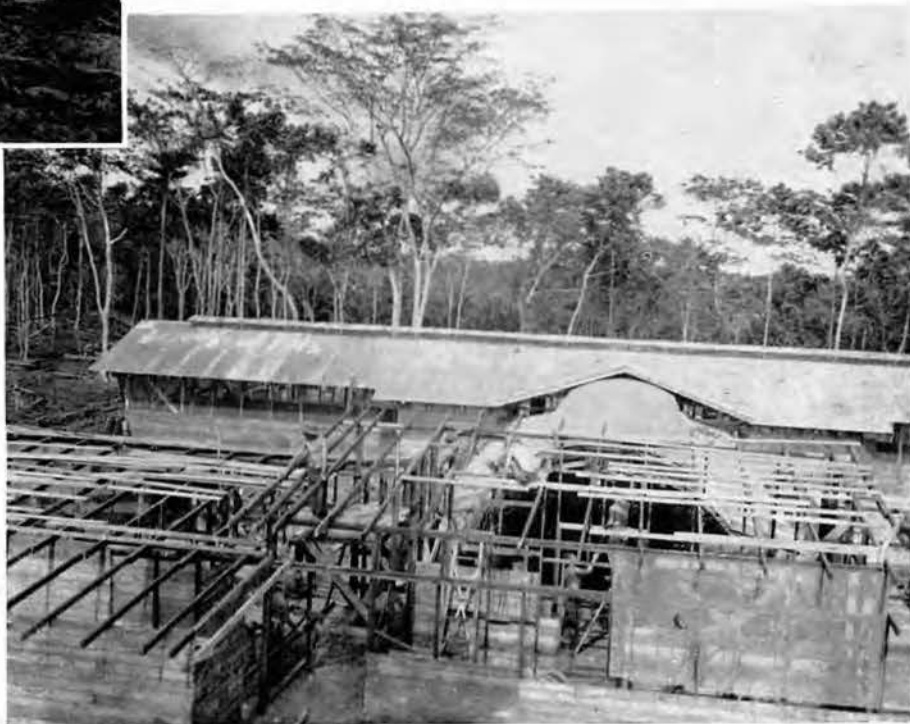


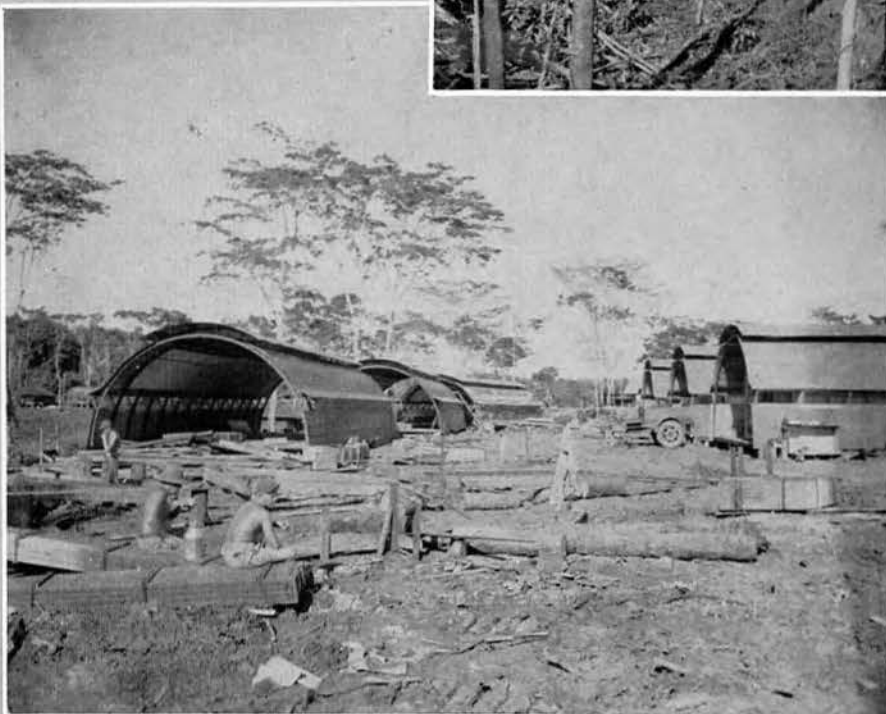


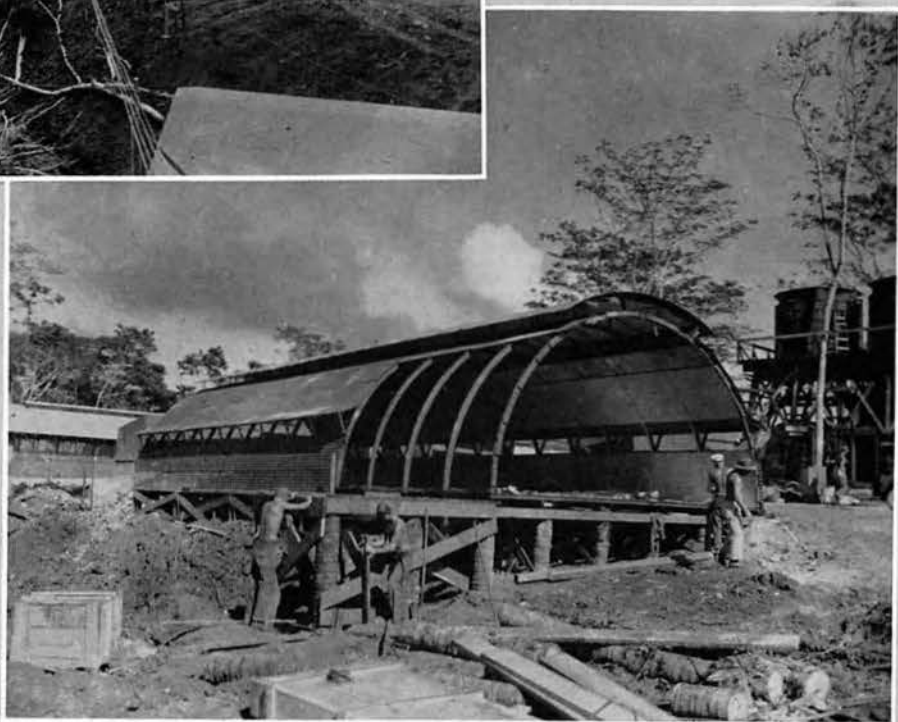
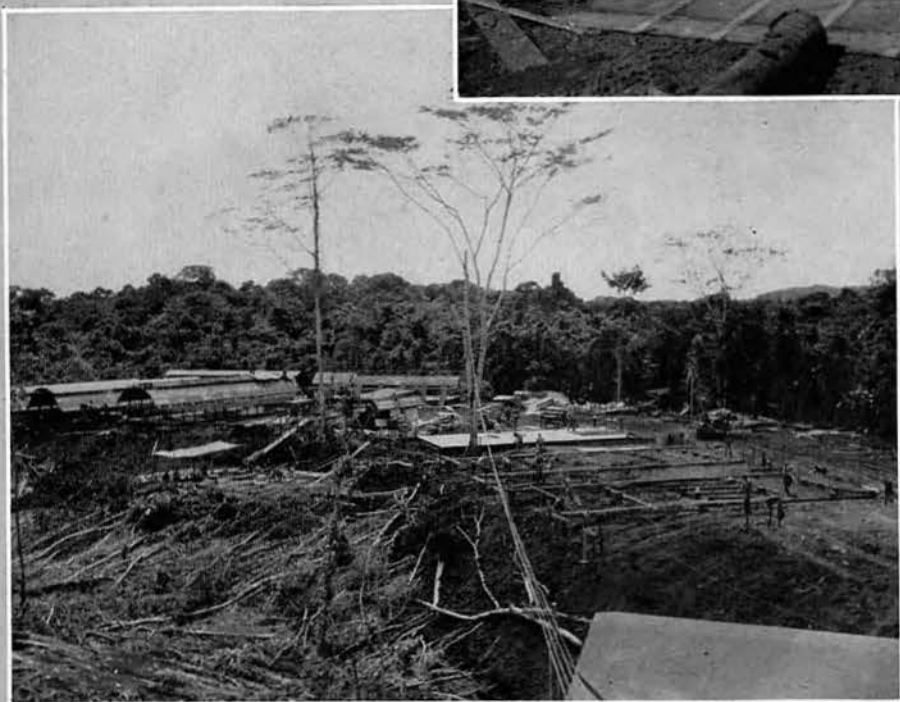














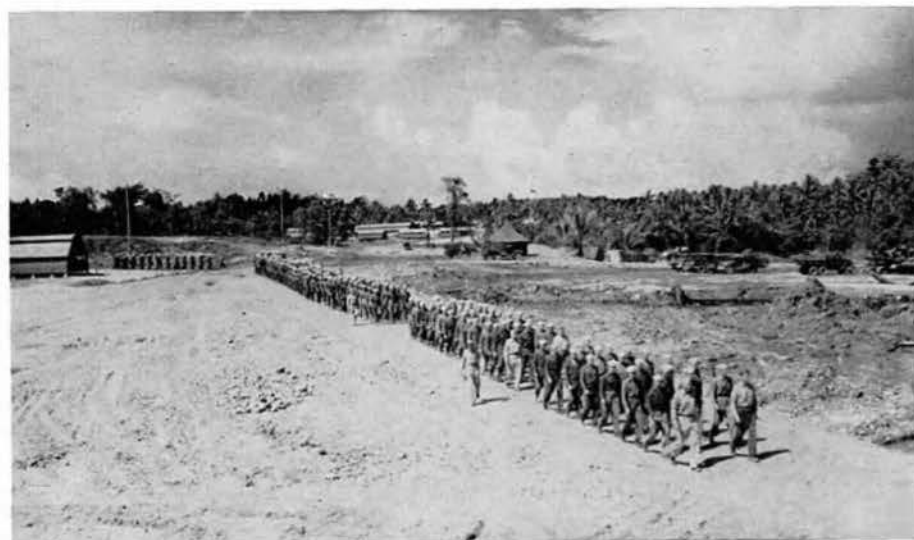




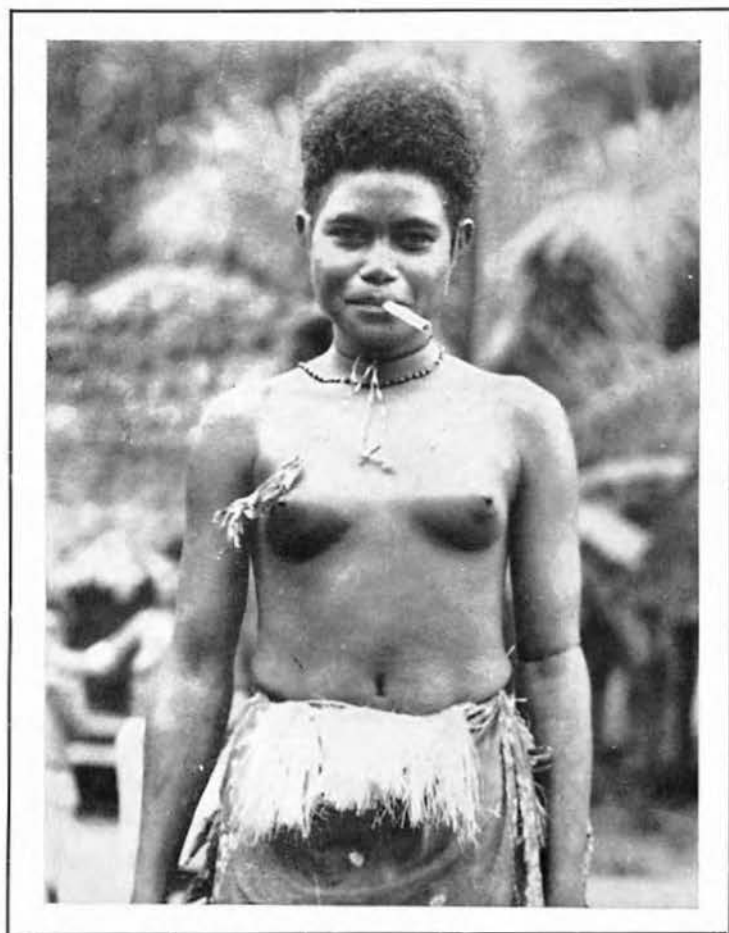
First meal in own chow hall.



DEDICATION DAY







THE NATIVES



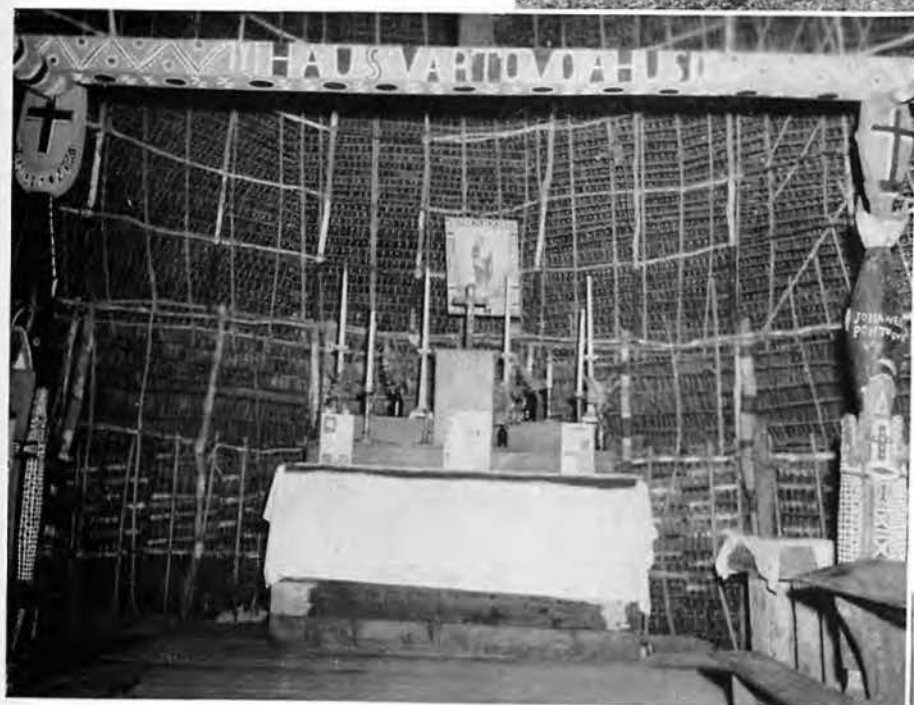




This house on Pak Island, belonging to an Australian coconut plantation owner, is the one modern building in the Admiralties not completely demolished or burned to the earth by the retreating Japs.



For some strange reason, the Japs during their two-year stay did not convert to their own use all of this fine herd on Pak Island. The cattle were imported to the island by the plantation owner before the war.



The altar of one of the many native churches which dot the islands.





Native Seabees at work . . . and examples of their handiwork.







Angau, the "show place" native village. Note the Hollywood touch in the picture below.



Right, Angau's brig, complete with guard.

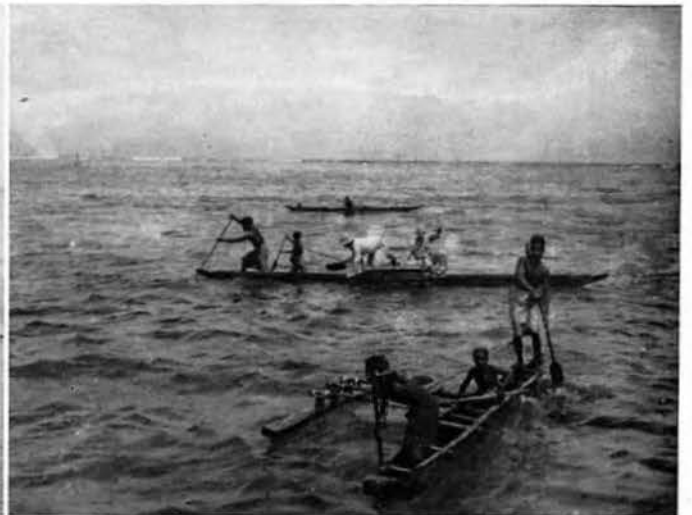
Below, The native heads: ladies right, gentlemen left.



Left, lower extension of Angau's Fifth Avenue.



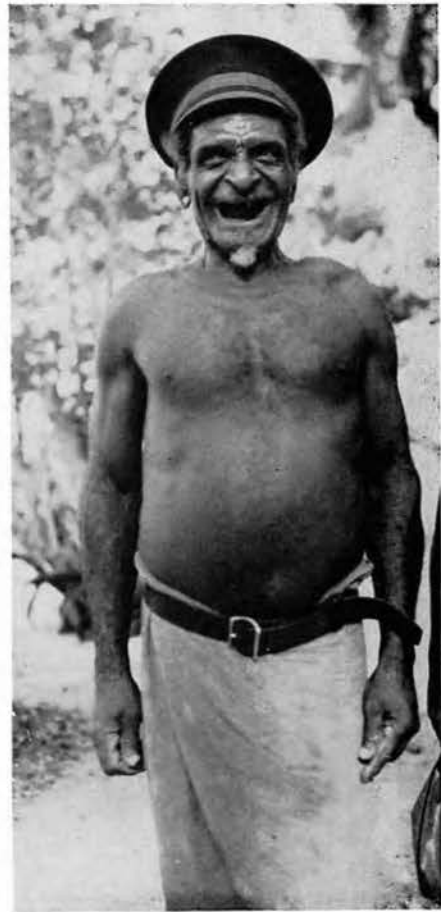
Native outriggers.







The native men are strong, quick and friendly . . . but can get plenty rough and tough.





The native women develop young and age quickly.



Middle right, the Curio Shop run by the natives at Angau, no bartering or trading, cold "Yankee dollar only." For protection of both the natives and Americans, prices are established by the Australian resident officer.

Lower left, young bloods dressed in their Sunday best.









FROM WHENCE WE CAME

OFFICERS

FRED O. REED, 25 South 23rd St., Terre Haute, Ind.
 CHARLES STRIEFF, 7948 Vernon Ave., Chicago Ill.
 EUGENE J. BLAINE, JR., 250 Morrison Ave., Staten Island, N. Y.
 ALVIN P. CONGER, Smithville, Tenn.
 CHARLES B. DUNN, JR., Chipley, Fla.
 MELVIN J. PODRIN, Carson City, Nev.
 AUSTIN C. FRANK, 907 Forrester Ave., Albuquerque, N. M.
 FRANK GIUSTO, 440 Otsego Ave., San Francisco, Calif.
 BAUGHN E. JOHNSON, 2861 Newport Ave., Omaha, Neb.

WHITNEY B. JONES, 1000 Wayne St., Macon, Miss.
 JOHN H. KELLER, 1516 Walnut St., Terre Haute, Ind.
 GEORGE A. KIRKBRIDE, 19531 Linden Ave., Seattle, Wash.
 JOHN C. LINDSEY, 132 East Robinson, Shreveport, La.
 HAROLD J. NIEMI, 324 McKinley St., North Hibbing, Minn.
 CLARENCE VERNON NORTHRUP, 1106 Gardena Blvd., Gardena, Calif.
 NEUMAN H. PATTON, 308 Rogers St., Houston, Tex.
 HAROLD E. PETERSEN, 6841 Dante Ave., Chicago, Ill.

BRUCE V. SELF, Rt. 8, Box 188, Birmingham, Ala.
 MELVIN J. SKINNER, 2055 Mar Vista, Altadena, Calif.
 LACHLAN M. STEWART, 223 East Central, Missoula, Mont.
 GRAEME D. THORNE, 319 Graham St., Montgomery, Ala.
 VERNON K. THORNE, 61814 W. 35th Pl., Los Angeles, Calif.
 EDWARD P. WHITE, 100 Dix St., Dorchester, Mass.
 THOMAS W. ZIMMERMAN, 2135 Titus Ave., Dayton, Ohio.

ENLISTED MEN

ALABAMA

W. C. BOLES, Rt. 2, New Market.
 LELAND BOOTHE, 811½ S St, 26 Ave., Tuscaloosa.
 LOIS BRIDGES, Rt. 2, Munford.
 H. E. BUTLER, Box 618, Tallassee.
 E. H. CLEMONS, Rt. 1, Killon.
 L. C. COLE, P. O., Fairfax.
 H. O. COX, Rt. 5, Athens.
 W. M. HAYS, Rt. 4, Hartselle.
 R. D. HEAD, 1818 Seventh Ave., S., Decatur.
 A. R. LEATHERS, 1817 Sixth Ave., S., Decatur.
 W. N. MABREY, 1832 Norris Ave., Gadsden.
 B. F. MILLER, 3843 40th Ave., N., Birmingham.
 C. L. MILLER, Abernant.
 W. R. MORAN, 4606 Sixth Ave., Wylam, Birmingham.
 S. O. MORRISON, Cottondale.
 H. W. MOSS, Rt. 1, Fort Payne.
 R. B. OLIVER, Rt. 3, Tuscaloosa.
 J. S. PARSON, 536 Bass Blvd., (Powderly 7), Birmingham.
 C. A. PERRY, 793 S. Jefferson St., Mobile.
 F. P. ROPER, Rt. 1, Wellington.
 L. J. SHINHOLSTER, JR., Rt. 4, Box 196-B, Tuscaloosa.
 J. A. SPENCE, Rt. 1, Tuscaloosa.
 W. E. SPIDLE, 539 Fulton Ave., Birmingham.
 M. E. STAPLER, Rt. 1, New Hope.
 E. E. STEVENS, 412 North Hull St., Montgomery.
 E. W. STORY, Rt. 2, Box 16, Auburn.
 J. T. SWINDALL, Ashville.
 PAUL THORN, 2515 Avenue H, Birmingham.
 A. L. VARNER, 614 West 14th St., Anniston.
 WILLIAM J. WALKER, SR., 4 Vandiver St., Rt. 3, Montgomery.
 H. C. WATKINS, Rt. 1, Quinton.
 G. A. WELCH, 435 Herron St., Montgomery.
 T. B. WOOD, Apt. K7, Glen Addie, Anniston.
 S. T. WRIGHT, JR., Box 510, Fayette.

ARIZONA

N. J. BENNETT, 110 West Elm St., Winslow.
 E. F. CHRISTIAN, 1441 E. Garfield St., Phoenix.
 W. E. MILLER, P. O. Box 1024, Copper Bas, Rd., Prescott.

ARKANSAS

R. M. BENETZ, 1617 McAlmont, Little Rock.
 R. E. BREWER, Rt. 1, Holly Grove.
 L. N. BURKS, Rt. 3, Berryville.
 J. W. CAMPBELL, Rt. 1, Judsonia.
 W. L. CASEY, 1111 West Third St., North Little Rock.
 L. T. CLARK, Rt. 1, Hamburg.
 J. C. COURTNEY, P. O. Box 45, Black Rock.

J. C. DE PRIEST, Trumann.
 J. L. R. GRIGGS, Rt. 1, Box 90, Luxora.
 W. L. INZER, Rt. 1, Camden.
 E. C. MAY, 1903 East Eighth Ave., Pine Bluff.
 H. L. ROBERTS, 1520 West 23rd St., Little Rock.
 B. F. SPLAWN, 520½ Center St., Little Rock.
 J. W. TERRY, 1495 Maple St., Little Rock.
 R. T. WILSON, 219 West Sixth, Hope.
 LEON YOUNG, Rt. 1, Leachville.

CALIFORNIA

F. D. ASHBY, 6614 Melrose, Los Angeles.
 H. B. ASTELLS, 1387 Hayes St., Apt. 10, San Francisco.
 F. M. BARKER, 758 Gale Ave., Hawthorne.
 C. T. BARRETT, 1669 Atlantic Ave., Long Beach.
 A. D. BENNETT, 936 West 55th St., Los Angeles.
 P. P. BIZAL, 738 Potrero Ave., San Francisco.
 D. L. BRISCOE, 100 Ninth St., Apt. 507, Oakland.
 L. J. CHRISTESON, 1127 West 163rd St., Gardena.
 R. W. COVE, 84 Forrestside Ave., San Francisco.
 E. R. CUN, Rt. 2, Box 72, Imperial.
 L. C. CROUCH, 414 North Orchard St., Burbank.
 R. A. DONAHUE, 6723 Makee Ave., Los Angeles.
 G. L. EDDY, 832 West 107th St., Los Angeles.
 W. J. PEIRL, Box 937, Portola.
 R. F. FERNANDES, 4630 Tulip Ave., Oakland.
 J. E. FINKEL, 400 North Culver St., Compton.
 PAUL FRANCESCHINI, 1059 21st St., Oakland.
 L. M. GRAVES, 816 Kemp St., Burbank.
 E. V. HEDRICK, 6616 Priam Dr., Bell.
 WALTER S. HEMPHILL, 476 E. Magnolia St., Burbank.
 H. J. HINZE, 1023 Sycamore Ave., South Pasadena.
 W. J. HOGAN, 1943 28th Ave., San Francisco.
 O. D. HUSTED, 845 Jefferson St., Napa.
 R. R. KNODEL, 1514 Cherry Ave., Long Beach.
 WALTER LEONG, 927 Towne Ave., Los Angeles.
 D. W. LINCOLN, Santa Rosa.
 R. B. MARTIN, 145 DeSoto St., San Francisco.
 J. C. MOUAT, 2125 Sacramento St., Berkeley.
 E. I. NEWTON, 3917 Huron Ave., Culver City.
 E. O. OLMSTED, 233 26th St., San Diego.
 E. S. PLEASANTON, 6689 Yucca St., Hollywood.
 F. J. QUEIROLO, 1865 Elizabeth Ave., Stockton.
 M. E. RAYNOR, Riverside.
 C. W. SIMONS, 851 I St., Reedley.

CLYDE SPENCER, 2625 South Spaulding Ave., Los Angeles.
 H. M. STEWART, SR., 919 East 73rd St., Los Angeles.
 W. S. STUMBAUGH, 206 Jackson St., Taft.
 G. D. SULLAWAY, P. O. Box 173, Weed.
 H. Q. TENNANT, 517 South Columbus, Glendale.
 W. J. TRIMBLE, 710 11th St., Sacramento.
 E. L. WILLIAMS, 1101 West 48th St., Los Angeles.
 H. A. WOSNUM, Box 181, Anderson.

COLORADO

H. L. W. BOLL, Burlington.
 J. H. HUGHES, 141 South Penn. St., Denver.
 W. G. LAGER, 1070 E. Bates Parkway, Englewood.
 C. W. MANNING, 2614 W. Dunkeld Place, Denver.
 V. M. ROTH, 5 South Fox St., Denver.
 THOMAS A. WEESE, 1822 Clarkson St., Denver.
 E. C. WILLIAMS, 1327 East 10th, Pueblo.
 T. B. WILSON, 4724 Perry St., Denver.

CONNECTICUT

E. W. BALL, Marion Ave., R. D., Plantsville.
 R. A. BERNIER, 66 North St., Danielson.
 R. M. BURDICK, 88 Maple St., Danielson.
 O. M. BUTTS, 801 East Boulevard, Marion.
 G. C. DAVIDSON, JR., 102 Baker Ave., Groton.
 ROGER DESPRES, 138 Jachon St., P. O. Box 355, Williamantic.
 J. J. EGAN, 259 Fountain St., New Haven.
 S. V. ESPOSITO, 1497 State St., New Haven.
 D. J. LITZ, 45 Vine St., Waterbury.
 HOWARD L. MULLEN, 364 Park Road, Waterbury.
 J. F. SEKELSKY, 115 Bell St., Bridgeport.
 E. W. SIKORSKI, 302 Stillman St., Bridgeport.
 A. A. SMITH, 43 Webster St., Meriden.
 J. W. STEELE, 208 Alsace St., Bridgeport.
 A. A. THOMAS, 80 Willow St., Meriden.

FLORIDA

H. D. BEATY, General Delivery, Monticello.
 H. H. CONVERSE, P. O. Box 8923, Northwood Sta., West Palm Beach.
 E. R. LAIRD, Rt. 2, Milton.
 W. A. MEARS, P. O. Box 124, Malone.
 B. F. RAND, St. Cloud.
 W. Z. RICKETTS, Box 950, Osceola.
 H. S. WILCOX, 617 Seventh Ave., Manatee Sta., Bradenton.
 E. C. WRIGHT, 2135 Seventh Ave., N., St. Petersburg.

GEORGIA

J. B. BARKER, Yatesville.
 D. W. CARROLL, 620 North Main St., College Park.
 J. M. CHEEK, Marble Hill.
 C. N. COOK, 805 S. Church St., East Point.

J. L. CROSS, Rt. 4, Ball Ground.
A. J. FRENCH, 692 Law St., N.W., Atlanta.
R. A. HAYES, Rt. 1, Kite.
A. C. MAYS, Rt. 1, Calhoun.
J. L. McWATERS, Rt. 2, Locust Grove.
PRENTICE OLIVER, 694 Larkin St., Apt. 472, Atlanta.
H. E. OWENS, Rt. 2, Armuchee.
D. W. PARKER, Rt. 2, Chatsworth.
A. R. ROBERTS, Cusseta.
T. W. SIBERT, 430 Walker St., Augusta.
E. R. SMITH, JR., 517 Chappell Rd., N.W., Atlanta.
W. U. SPRINGFIELD, 1315 N. Avenue, Atlanta.
L. W. STANSELL, Armuchee.
NOEL TAYLOR, Star Route, Presley.
W. L. THOMAS, Box 104, Folkston.
G. W. TUCKER, Rt. 2, Austell.
H. W. WALL, 1121 17th St., Columbus.
R. Y. WARREN, 400 First Ave., S.W., Cairo.
H. E. WHITE, 47 McLendon Dr., Avondale Estates.

IDAHO

D. J. CHRISTENSEN, Baneroff.
P. F. HAACK, 496 K St., Idaho Falls.
G. R. KAY, Box 554, Parma.
B. H. SAMS, Rt. 2, Parma.

ILLINOIS

E. E. ABBOTT, Malta.
G. W. AMUNDSON, SR., 1523 Marengo Ave., Forest Park.
L. F. BAUMAN, 406 E. Park St., Harvard.
F. F. BLACKBURN, Fireworks Branch P. O., East St. Louis.
H. W. BOWIE, 1050 Ninth St., La Salle.
R. T. BRAY, 307 W. Stewart St., Bloomington.
P. T. BRAZEE, Rt. 1, Fairview.
H. L. BRIGHT, 373 East Chicago St., Elgin.
R. W. BRYCK, 5925 S. Bishop St., Chicago.
L. B. BROWN, Rt. 1, Tennessee.
E. J. COULSON, 1813 S. Ridgeway Ave., Chicago.
I. J. COWAN, Palos Park.
E. R. DZIUBINSKI, 2408 South 60th Court, Cicero.
C. M. FOCARETA, 247 E. 22nd St., Chicago Heights.
J. W. JACOB, 1242 Broadway St., Quincy.
F. L. KELLEY, 1188 N. Daniels St., Springfield.
O. L. KINDER, 615 West Washington St., Newton.
FRANK KLEIN, JR., 5731 North McVicker Ave., Chicago.
NICK KOPUN, 628 E. 11th St., Kewanee.
J. P. MAKOWIAK, 3305 S. Aberdeen St., Chicago.
G. E. MARTIN, 225 Clay St., Warsaw.
C. R. MILLS, JR., Box 155, Greenup.
G. J. NORDSTROM, 327 13th St., East Moline.
E. H. PUTZ, 708 17th St., Rock Island.
W. A. PYNE, 2344 Wilson Ave., Chicago.
H. F. RITO, 6229 S. Rockwell St., Chicago.
J. SZEWIC, 2045 Cortez St., Chicago.
JACK TIEDEMANN, Marietta.
J. W. WARRELL, 4306 N. Campbell Ave., Chicago.
J. H. WEEDMAN, 308 N. Amos, Springfield.
V. J. WOOLEY, 355 First Ave., Joliet.
C. A. YOUNG, 3125 Home Ave., Berwyn.

INDIANA

J. J. BADANISH, 1064 Harrison Blvd., Gary.
R. W. BELL, 160½ Kossett St., LaFayette.
DENVER BRATTAIN, 104 Olive St., Greencastle.
E. D. BRONSON, 1021 E. Mulberry St., Kokomo.
W. T. CHANEY, 739 Chestnut, Columbus.
M. P. CLARK, 2312 South Mulberry St., Muncie.
H. J. DONATHEN, 228 East LaSalle Ave., Mishawaka.
D. M. EAST, 890 East Columbus St., Martinsville.
A. H. ELLARD, 2323 W. Ohio St., Evansville.

M. J. FEIN, 714½ North Main St., Evansville.
L. G. FLEEMAN, 318 Hendricks Ave., Jeffersonville.
G. E. GOODLIN, 1405 Boyer St., Richmond.
R. L. HAGGERTY, 410 North Main St., Rochester.
W. W. HAMILTON, 380 West Harrison St., Martinsville.
O. W. JOHNSON, Rt. 3, Box 176, Indianapolis.
R. R. McDANIEL, 2046 Berkley Pl., South Bend.
R. E. MERCHANHOUSE, 411 Sedgwick St., Richmond.
J. H. NICHOLS, 6044 Crittenden Ave., Indianapolis.
A. A. NICHOLSON, 1421 West Eighth, Rt. 6, Bloomington.
W. W. PEET, 616 South Canal St., Alexandria.
M. G. RITTENHOUSE, 1602 South J St., Elwood.
W. C. SCHWARTZ, P. O. Box 24, Creston.
K. W. SWANSON, Rt. 2, La Porte.
GLEE TRUESDEL, Cloverdale.
L. B. VON BEHREN, 28 East Jefferson St., Vincennes.
R. C. WHITEMAN, 722 E. Ewing Ave., South Bend.
F. L. WORTH, 645 Maryland St., Gary.
F. R. WRIGHT, P. O. Box 123, Edwardsport.

IOWA

E. E. ABBEN, Box 126, Briston.
WALTER BRECKLING, 422 West Pleasant St., Davenport.
J. E. DAVIS, 1224 Lewis Ave., Des Moines.
R. K. DAVIS, Box 168, Eldon.
G. W. FESSENDEN, 521 19th St., S.E., Mason City.
R. E. FISK, Farley.
FRANK GOLAD, 611 Eighth St., S.E., Cedar Rapids.
G. W. HULTZ, Jesup.
M. C. LEWIS, Central City.
R. T. MASON, Newburg.
R. W. McCUNE, 512 Lorella St., Ottumwa.
C. H. RICE, 1108 Lincoln St., Waterloo.
L. W. SAUER, 3012 State Ave., Des Moines.
P. S. STAPLETON, 223 Seventh Ave., S., Clinton.
R. J. THOMAS, 312 South 10th, Cherokee.
N. J. UNDERBERG, JR., 221 North Court St., Box 308, Carroll.
H. D. USHER, 3430 E. Ave., N.E., Cedar Rapids.

KANSAS

C. J. BINNEY, Box 119, Coffeyville.
C. R. DEVEREAUX, 1317 West Fifth St., Oswego.
J. H. DICKINSON, 2901 West 43rd Rosedale.
J. W. GOODIN, Massasoit Hall, Apt. 44, Atchison.
J. D. GULL, Box 104, Garnett.
D. C. McCUNE, 733 South 10th, Salina.
F. E. NICHOLSON, 1024 N. Teles Ave., Larned.
H. E. RAFFERTY, 301 North Buckeye St., Iola.
L. A. RENO, 324 South Lowman, Fort Scott.
J. E. SHELLHORN, 304 West First St., Ellsworth.
J. L. WILCOX, 1317 Fuller, Winfield.

KENTUCKY

CHARLIE CAMPBELL, Butterfly.
CLYDE CHINN, 333 23rd St., Ashland.
R. E. DAUGHERTY, Sanders Lane, Shively.
LAWRENCE FARLEY, Box 3, Keith.
F. H. FUQUA, 450 Wade, Russellville.
V. M. JENKINS, 848 Vine St., Raceland.
GEORGE ROARK, 105 East Walnut St., Richmond.
C. H. SIEGEL, 2331 Duncan St., Louisville.

LOUISIANA

A. W. ANSELMO, 1412 Bienville St., New Orleans.
G. S. CAMP, 607 Natchitoches St., West Monroe.
C. M. CHANDLER, Rt. 2, Dodson.
E. S. COLLINS, 1516 Spain St., New Orleans.

J. E. HEINZ, 406 Pruitt St., Lake Charles.
F. G. KOKEMOR, 2308 Elysian Fields Ave., New Orleans.
C. R. MORGAN, Rt. 3, Monroe.
HUGH MURRAY, SR., 401 Colquitt St., Bossier City.
D. P. PARKER, 260 Merrick St., Shreveport.
ALBIN PATIN, Box 92, Breaux Bridge.
F. E. PERCY, 701 Avenue B, Bogalusa.
E. I. SNAKENBERG, 1229 Ninth St., New Orleans.
L. P. WILLIAMS, 2214 N. Broad St., New Orleans.

MAINE

G. J. ARSENAULT, 41 Allen St., Sanford.
P. M. CAMPBELL, 67 Middle St., Skowhegan.
S. H. CURTIS, 5 Hobson St., Lubec.
M. W. KENNEDY, Union.
W. A. SOULE, Rt. 2, Freeport.

MARYLAND

H. C. JOHNSON, 603 West Franklin St., Hagerstown.
G. M. NOTTINGHAM, 109 Ashylon Ave., Salisbury.
A. N. PERRY, 47 Dean St., Annapolis.
G. R. H. SMALL, 5922 Kavon Ave., Baltimore.
T. N. STOPPENBACH, 110 Reistertown Rd., Pikesville.

MASSACHUSETTS

D. H. ALEXANDER, 17 Lark St., Quincy.
J. T. BARRIE, 19 Japonica St., Salem.
J. A. BERNARD, 408 McGrath Highway, Somerville.
E. P. CAMELIO, 30 Woodcliff St., Dorchester.
A. R. CAMEROTTI, 2417 Columbus Ave., Springfield.
J. W. CANTY, 542 Sixth St., South Boston.
F. W. CAPPELLA, 36 Tuttle St., Cambridge.
R. J. COTE, 1 Cote St., Amesbury.
L. G. CRADDOCK, 10 Northam Park, Dorchester.
S. P. DEL ROSSI, 45 Orchard St., Lynn.
T. L. ELY, 29 Station St., Sharon.
M. A. ENOS, 2 Major St., Attleboro.
C. K. FOSS, 134 Abbott St., Lawrence.
J. A. FRAWLEY, 25 Burrell St., Roxbury.
D. N. GAMELIN, Main St., Manchaug.
JOSEPH GAVIN, 332 Union St., Braintree.
V. L. HJELM, 12 Clement Ave., Peabody.
L. R. HOULE, 105 Springfield St., Lawrence.
D. J. JACKIMOCZ, 206 Hathaway St., New Bedford.
PETER JENSEN, 29 Tennyson Rd., Wellesley.
W. R. JONES, Billington St., Plymouth.
J. C. KATA, 6 Marble St., Haverhill.
F. C. KELLEY, 37 Beal Rd., Waltham.
FRANK KOWALSKI, 16 Meridian St., Melrose.
R. J. LEAVITT, 62 Glenville Ave., Allston.
JAMES D. LILLY, 563 Water St., Fitchburg.
FERNANDO MEDEIROS, 53 Calumet St., New Bedford.
J. F. MOSSMAN, 574 Main St., Medford.
W. C. QUIMET, 28 Worcester Ave., Springfield.
A. J. FERODEAU, 22½ West Plain St., Cohituate.
R. W. REID, 850 Broadway, Everett.
J. D. RIGOLI, 28 Calvary St., Waltham.
A. G. STEVENS, Southfield.
P. F. SULLIVAN, 35 Fremont St., Lowell.
A. H. TREMBLE, 314 St. James Ave., Springfield.
K. G. VACZY, 98 Light St., Lynn.
ALTON C. WADE, 59 Howard St., New Bedford.
J. L. WHITE, JR., 352 Ocean St., Hyannis.
A. E. WILLARD, JR., 17 Cleveland St., Greenfield.

MICHIGAN

H. L. AUNGST, 156 Summer St., Battle Creek.
A. M. BEADLE, Rt. 3, Box 164, Mt. Clemens.
C. W. BELL, 9124 Ortonville Rd., Rt. 2, Clarkston.
P. W. BOLENDER, Rt. 1, Centerville.
J. R. BRAFORD, 8825 Neal St., Detroit.
A. F. BRUCKLER, 402 North Warren Ave., Saginaw.
L. A. CARLSON, 718 North Front St., Marquette.
W. C. CODY, 8504 Nathan Hall, Centerline.

JACOB DE YOUNG, P. O. Box 62, McBain.
 JOHN DURA, 2800 Salina Ave., Dearborn.
 H. H. GARTISER, 18654 Warrington Dr., Detroit.
 A. S. HATCH, 910 Lake Blvd., St. Joseph.
 P. E. IRWIN, 31754 Arenac Court, Wayne.
 JOSEPH JANIK, 108 Russell St., Durand.
 C. J. JOHN, The Shallows, Sault Ste. Marie.
 D. R. KENDRICK, 2231 Fourth Ave., Sault Ste. Marie.
 R. V. KOHUT, 830 W. Euclid, Detroit.
 R. D. LEAMAN, Rt. 3, Freeland.
 P. R. NICHOLS, Rt. 3, Middleville.
 L. Q. OLIVOTTI, 621 South Rademacher St., Detroit.
 H. W. OLSEN, 18450 Coyle, Detroit.
 C. B. PARKHILL, 7787 Fielding Ave., Detroit.
 GEORGE PECK, JR., 324 1/2 Madison St., Grand Haven.
 CHESTER POLITOWSKI, 11903 Jos. Campani, Hamtramck.
 T. W. QUAIN, 159 Candler, Highland Park.
 H. L. SCOTT, 2039 West Grand Blvd., Detroit.
 JOHN THOMAS, 16244 Birwood, Detroit.
 R. L. WESTCOTT, Rt. 2, Gobles.

MINNESOTA

H. M. AASEBY, 204 North Markley Ave., Thief River Falls.
 C. J. ANDERSON, Mapleton.
 R. E. BUSCHO, P. O. Box 616, Wells.
 L. W. CARLSON, Rt. 1, Lake Lillian.
 W. J. CULBERTSON, 681 Stewart Ave., St. Paul.
 W. E. GORE, Rt. 1, Pipestone.
 G. W. GUNDERSON, 3539 Sixth St., N., Minneapolis.
 ALFRED J. MOE, 611 12th Ave., S.E., Minneapolis.
 R. H. WASILK, 700 York St., St. Paul.
 W. E. WENTZEL, 3748 23rd Ave., S., Minneapolis.
 A. S. YOUNG, 1293 Portland Ave., St. Paul.
 G. J. ZANMILLER, 917 South Division St., Northfield.

MISSISSIPPI

T. L. BURCHFIELD, Rt. 1, McCool.
 R. P. COLLINS, 204 Second Ave., Cleveland.
 J. S. CRUISE, Liberty.
 G. W. ROATEN, Rt. 1, Mabon.
 W. A. SCHATZGEN, P. O. Box 481, Biloxi.
 E. D. TALBERT, Rt. 3, Union.

MISSOURI

L. L. BELGERI, 5536 Dugan, St. Louis.
 HALLIE BRONER, Rt. 2, Kennett.
 E. M. BROSHEARS, Rt. 3, Sikeston.
 G. J. CAMPBELL, Rt. 10, Springfield.
 G. V. COMBS, Allendale.
 M. M. DE LAIR, 102 North Lawn St., Kansas City.
 R. E. HINES, Cosby.
 C. A. HUGHES, 8614 Smart Ave., Kansas City.
 E. C. LINN, JR., 5938 Summit Pl., St. Louis.
 D. N. MERRIOTT, 230 S. Quincy, Sedalia.
 E. L. WILLARD, Koshkonong.
 C. R. WILLIAMS, 5241 Waterman St., St. Louis.

MONTANA

FREDERICK ARMSTRONG, 1025 First Ave., N.W., Great Falls.
 M. A. BERGLAND, Columbus.
 R. O. BURT, Forsyth.
 R. N. SIEG, 2731 Aberdeen St., Butte.
 L. E. SMITH, Box 88, Billings.
 G. E. STENSRUD, Libby.
 AUGUST TIEDEMANN, Box 872, Malta.
 D. D. TYLER, 84 West Idaho St., KallisPELL.

NEBRASKA

M. L. ARCHBOLD, 2718 Howard St., Omaha.
 M. D. BUTLER, Cushing.
 W. F. FARRELL, Culbertson.
 A. E. HART, Creighton.
 A. J. HINSHILWOOD, 1719 Lane St., Falls City.
 R. W. LINDMIER, JR., 4335 Charles St., Omaha.
 L. A. SKALBERG, Wausa.
 J. J. TOUREK, 4532 South 24th St., Omaha.
 C. B. WOLFORD, 1119 Blaine St., Norfolk.

NEW HAMPSHIRE

A. C. BARLOW, 716 Union Ave., Lakeport.
 G. H. BROWN, Rt. 2, Box 156, Derry Village.
 R. C. CROFT, Stratton Rd., East Jaffrey.
 L. A. GUSANELLI, 35 West Terrace St., Claremont.
 L. F. DAVIS, 46 Portland St., Dover.
 A. H. EASTMAN, 46 Church St., Lebanon.
 J. L. GAGE, 51 Garrison Rd., Dover.
 B. G. PEARSON, Pittsburg.
 D. C. SMITH, Ridgewood Ave., Rt. 4, Laconia.
 R. O. WOODWARD, Plainfield.

NEW JERSEY

PAUL BACHIKE, 23 Prospect St., Trenton.
 R. A. BYRNES, 49 Cranford Pl., Teaneck.
 J. R. CONVERY, 63 Cleveland Ave., Trenton.
 GARRETT DALE, 19 Marcellus Ave., Paterson.
 R. V. DOLSON, 454 Greenmount Ave., Cliffside Park.
 R. J. FARRO, 16 Peckman Rd., Cedar Grove.
 G. J. FERRY, III, 2 Williams Rd., Chatham.
 R. H. FRY, 46 Alexander St., Newark.
 IRA GASKILL, 101-A Reese Ave., Lavallette.
 E. J. GILHAM, 300 Main St., West Orange.
 J. H. HOLMES, 119 Polson Ave., Atlantic City.
 S. V. JACKSON, 117 Carolin Ave., Trenton.
 H. C. LAUTENSCHLAGER, 64 Ettrick Terr., Rutherford.
 E. L. MARTEL, 395 New York Ave., Jersey City.
 R. A. NICKERSON, 216 Pleasant Ave., Englewood.
 J. D. PARILLO, Rt. 4, Box 511, New Brunswick.
 C. A. RAZZANO, 300 Berckman St., Plainfield.
 L. R. RENSHAW, W. Landis Ave., Vineland.
 R. M. STEVENS, 94 Highwood Ave., Englewood.
 J. F. WAJSZCZUK, 202 York St., Jersey City.

NEW MEXICO

M. A. CARRASCO, Rt. 1, Box 68-A, Carlsbad.
 K. E. EDWARDS, Box 116, Fort Sumner.
 T. L. ELKINS, JR., Box 7, Prewitt.
 F. B. HOISINGTON, Box 1095, Grants.
 D. H. SYLVESTER, Nageezi.

NEW YORK

R. F. BLACKLEY, 1712 10th St., Niagara Falls.
 F. R. BROHAN, 219 East 201st St., Bronx.
 H. F. BROWN, 68-60 Continental Ave., Forest Hills, L. I.
 HAROLD CARLSON, 16 Dewey Ave., Yonkers.
 M. E. CECE, 425 North Terrace Ave., Mount Vernon.
 D. A. CLOWERY, 216 East 16th St., Brooklyn.
 V. F. CRAM, Box 174, Keene.
 G. K. DANIELS, 434 Loder St., Waverly.
 J. J. DEMPSEY, 84 Lake Ave., Middletown.
 G. W. EATON, Box 467, Broadalbin.
 J. D. EVANS, 250 Main St., Massena.
 M. H. FETTERMAN, 458 Franklin St., Elmira.
 G. H. HAHN, Jefferson Co., Evans Mills.
 G. T. HAMMOND, 8719 78 St., Woodhaven, New York.
 J. J. HOGAN, 1831 Arnow Ave., Bronx.
 ANDREW JANOWCZYK, 66 Box St., Brooklyn.
 P. L. JENKINS, Rt. 2, Fort Edward.
 STEPHEN JIHOR, 530 West End Ave., New York.
 CLIFFORD JORGENSEN, Rt. 1, Elnora.
 J. L. KEENAN, 27 Tryon Park, Rochester.
 I. C. KIER, 1326 East Ave., Brighton.
 MYRON KIPP, Rt. 1, Schoolhouse Rd., W. Ave., Albany.
 ALEXANDER KORNIWICZ, 5519 Seventh Ave., Brooklyn.
 WALTER LEARY, 2821 Clifton Ave., Bronx.
 J. T. MANNING, 308 Webber Pl., Elmira.
 C. P. MORITZ, 33-16 81st St., Apt. 21, Jackson Heights, L. I.
 F. A. NASS, 2037 Fairview Ave., Schenectady.
 JOHN PETRAK, 24-35 28th St., Long Island City.
 J. A. PETRAS, 390 Rench Rd., Williamsville.
 S. F. POWELL, 417 Shannon St., Schenectady.
 GEORGE PUGLICI, 66-17 Perry Ave., Maspeth.
 A. J. RAINONE, 2 Parmenter Ave., Troy.
 G. W. REBHAN, 2032 43rd St., Astoria, L. I.
 EDWARD RICHARDS, 914 Union Ave., Bronx.
 H. H. RIDER, Westhill House, Camillus.
 R. E. ROBARE, 139 State Pl., Watertown.
 CARL ROEMER, 64 Fairview Ave., Islip Terrace, L. I.
 J. F. ROSE, 505 Klak St., Ogdensburg.
 J. B. SANSTROM, 42-65 79th St., Jackson Heights, L. I.
 H. J. SCHICHTEL, 65 Sheffield Ave., Buffalo.
 STEPHEN J. SCHMIDT, 215 East 76th St., New York.
 KURT SCHUERGER, 76-01 58 Rd., Elmhurst, L. I.
 J. C. SCHUTTEE, 20 Spiegel Park, Rochester.
 A. R. SEASTEDT, Rt. 1, Jamestown.
 E. J. SIMINSKI, 67 Colby St., Buffalo.

G. J. SMITH, 325 West 21st St., New York.
 M. M. SPERO, 929 Greene Ave., Brooklyn.
 ANTHONY SPINELLI, 615 E. 189th St., New York.
 J. B. SZCZOTKA, Main St., Rt. 25, Peconic, L. I.
 J. J. THEROUX, 128-28 148th St., South Ozone Park, L. I.
 G. O. TIFFANY, Rt. 2, Oneonta.
 J. D. TOMASSI, 524 Powell St., Brooklyn.
 HARRY TRISTER, 35 Rockridge Rd., Mount Vernon.
 F. J. UHLE, Rt. 1, Newfield.
 G. H. WALL, 1179 Jefferson Ave., Brooklyn.
 W. N. WEEDEN, 13 Market St., Goshen.
 J. F. WIEDEMANN, (Near Albany), Glensmont.
 C. E. WILLIAMS, 136 North Pleasant St., Watertown.

NORTH CAROLINA

A. B. BOLICK, Rt. 3, Box 234, Lenoir.
 J. N. BRADLEY, 133 Powell St., Swannanoa.
 Z. L. BRADLEY, Box 32, Dallas.
 J. W. CARTER, Rt. 2, Box 66-A, Chadbourne.
 L. W. CLARK, Margarettsville.
 R. W. COCHRAN, Rt. 1, Box 18-A, Kannapolis.
 B. R. CURRIN, Rt. 2, Angler.
 C. R. DAVIS, SR., Rt. 2, Mt. Olive.
 E. H. GOWER, Rt. 1, Clayton.
 F. A. HORTON, 609 Jackson Ave., Charlotte.
 W. A. KENNETT, Box 268, Morganton.
 GLENN R. LAIL, Rt. 2, Box 133, Hickory.
 T. B. MCCOLLUM, Greensboro Rd., Reidsville.
 N. M. MEARES, 113 South Van Buren St., Wilmington.
 J. A. MIDKIFF, 178 E. Lebanon St., Mt. Airy.
 R. E. NANCE, 708 St. Marys St., Raleigh.
 RICHARD R. NEAL, Box 97, Walnut Cove.
 R. F. PENNY, 901 Glenwood Ave., Raleigh.
 F. W. PINNIX, Cycle.
 NATHANIEL POOLE, 1620 Gordon St., E. White Oak.
 A. A. PRYOR, Rt. 2, Ruffin.
 R. H. RAKESTRAW, Rt. 4, Reidsville.
 C. C. ROBERTSON, Rt. 1, Box 394, Leaksville.
 J. H. ROBERTSON, JR., Rt. 1, Pine Hall.
 ORRIN D. SHAW, Booneville.
 G. W. SMITH, JR., Rt. 2, East Bend.
 J. D. SMITH, Rt. 2, Box 307, Walnut Cove.
 P. H. SMITH, Rt. 1, Reidsville.
 R. G. STOUT, Rt. 1, Graham.
 JOHNNIE SULLIVAN, JR., Rt. 1, Stoneville.
 G. L. SWAIM, Rt. 1, Elkin.
 E. M. TAYLOR, Pysatte.
 R. O. THOMAS, Cranberry.
 A. P. TOWNSEND, P. O. Box 411, Red Springs.
 M. G. TRIVETT, Crossnore.
 A. M. VARNER, 704 Glenwood Ave., Raleigh.
 V. J. VESTAL, Rt. 1, Jonesville.
 J. M. WATTS, King.
 J. R. WHITT, 625 Lincoln St., P. O. Box 394, Spray.
 S. G. WISE, Crossnore.
 H. J. C. WOODS, P. O. Box 36, Heaton.

NORTH DAKOTA

W. L. BERNSTEIN, Durbin.
 M. O. CARLSON, 331 Summit Ave., Grand Forks.
 WILLIAM L. KELLY, 313 Fourth Ave., N., Grand Forks.
 H. D. LANGLEE, JR., Rt. 2, Bowman.
 C. R. WAID, 115 First St., E., Dickinson.

OHIO

D. R. BOST, Rt. 4, Napoleon.
 GLENN BOYCE, 415 East Larwess St., Wooster.
 L. J. BROCKMAN, 3909 Herron Ave., Cincinnati.
 E. L. BROOKMAN, 229 East Eagle St., Fostoria.
 R. J. BUESCHER, Rt. 4, Ottawa.
 P. P. CEBULAK, JR., Rt. 1, Hubbard.
 P. K. DAVIS, 14227 Strathmore Ave., East Cleveland.
 L. N. DUPPS, 4258 Orchard Lane, Deer Park, Cincinnati.
 H. B. EMERY, 7900 Blue Ash Ave., Deer Park.
 R. J. FOLEY, Rt. 5, Hamilton.
 E. H. FRITZ, 3018 E. High St., Springfield.
 W. F. GEORGE, Gardendale Ave., Rt. 2, East Liverpool.
 D. H. HARRIS, 443 David St., Marion.
 H. H. JACKSON, 3738 Darwin Ave., Cincinnati.
 L. R. KAISER, 762 W. State St., Columbus.
 L. M. KELLEY, SR., 34 Tuttle Court, Geneva.
 B. S. KERNS, 715 Johnston Dr., Sidney.
 R. F. KOCH, 507 N. Depot St., Sandusky.
 H. B. LOWE, 1002 Orange St., Coshocton.
 JOHN NANASHE, 1223 Curtis St., Akron.

W. K. PRIEST, 1827 W. Main St., Springfield.
 A. C. RICE, Rt. 2, Ironton.
 H. P. RICHTER, 3752 Drake Ave., Cincinnati.
 H. M. SAWYER, Rt. 3, Minerva.
 P. R. SHEETS, 652 New Court, Youngstown.
 F. E. SMILEY, 800 North Main St., Findlay.
 R. H. SNYDER, 1128 June St., Fremont.
 L. J. STREAMANOS, 3575 West 98th St., Cleveland.
 R. K. SWITZER, 416 Madison Ave., Steubenville.
 J. A. TOMSIC, 16317 Prince Ave., Cleveland.
 R. C. TROYAN, 2826 Washington Ave., Cleveland.
 R. W. WALKER, 23909 Maple Ridge Rd., Rocky River.
 C. R. WERT, Russell's Point.
 B. H. WILLIAMS, 1005 Columbia Ave., Middletown.
 G. D. WILLIAMS, 20831 Stratford Ave., Rocky River.
 H. V. WINGO, Rt. 1, Piketon.

OKLAHOMA

A. M. BAILEY, Rt. 6, Box 744, Tulsa.
 E. T. BARBER, 203 North Chestnut, Pauls Valley.
 R. H. BLEVINS, Rt. 1, Greenfield.
 D. H. BRADLEY, Box 150, Jefferson.
 H. H. BROWN, Rt. 2, Madill.
 J. N. BROWN, 640 East Line St., Sapulpa.
 L. F. CONNER, Box 281, Saffna.
 E. R. DILLON, 1208 Maple, Duncan.
 E. R. DUNN, Rt. 4, Elk City.
 VERNON GILL, Rt. 2, Box 91, Allen.
 J. H. GLASGOW, Box 47, Roff.
 H. D. HAMILTON, Rt. 2, Box 484, Henryetta.
 V. L. HESS, 1106 West Park, Oklahoma City.
 B. B. HUTTON, Rt. 1, Davidson.
 L. H. JOHNSTON, Box 252, Grainola.
 K. W. KEPLER, 19 North Eighth St., Duncan.
 D. F. SPIES, Sealing.
 JACK TURNBULL, Highlands Heights, Henryetta.

OREGON

D. R. BABEL, Port Oxford.
 W. P. BLONDO, R. F. D., Tillamook.
 W. W. EDIGER, Rt. 1, Box 328, Dallas.
 J. I. ELLER, JR., Rt. 2, Box 52, Jacksonville.
 L. C. EPLEY, 118 Evergreen Ave., Salem.
 E. P. EVANS, 929 Washington St., Klamath Falls.
 J. F. HOKE, 971 West Eighth St., Eugene.
 J. D. LADD, Rt. 4, Box 137, Sherwood.
 M. C. McCOY, Box 82, Island City.
 W. H. WAINSCOTT, Rt. 3, Box 473, Hillsboro.
 A. L. ZIMMERMAN, 6 Irving St., Bend.

PENNSYLVANIA

L. L. ALDRICH, 114 East Main St., Bradford.
 ANTHONY ALKONIS, 4238 Richmond St., Philadelphia.
 F. J. BLODER, 5037 Homestead St., Philadelphia.
 L. D. BOND, Saylorsburg.
 E. F. BRUBAKER, 719 Glennwood Ave., Johnstown.
 W. S. BUTLER, 631 South Sixth St., Jeannette.
 W. E. CHAMBERS, 1218 West Sargent St., Philadelphia.
 P. M. CHIZ, 805 Radcliffe St., Bethlehem.
 D. J. CICHETTI, 209 Ella St., Pittsburgh.
 J. G. CLARKE, 162 Tompkins St., Pittston.
 S. H. COMITZ, 1105 Pine St., Phillipsburg.
 W. E. CROPP, 154 Shaver Ave., Shavertown.
 R. J. DORIAN, 184 Blaine St., Johnstown.
 E. J. FELIX, Rt. 2, Box 318, Conneltsville.
 W. S. GEARY, 404 Highland Ave., Conneltsville.
 H. H. JACKSON, Breezewood.
 W. R. KINGSLEY, Youngsville.
 W. F. KRESOCK, 295 Canaan St., Carbondale.
 J. B. KRULL, 929 Watson St., Corapolis.
 H. J. LAMMY, 4 Canton St., Troy.
 L. J. LANUNZIATA, 617 Exeter Ave., W. Pittston.
 D. T. LENTZ, Box 63, Ardara.
 L. F. MILLER, Rt. 1, Mohnton.
 C. W. NEES, 298 Harold Ave., Johnstown.
 J. A. OLSON, 445 S. Grand St., Lewistown.
 C. E. ORRIS, 114 S. Chestnut St., Mechanicsburg.
 M. V. OSBORNE, 209 1/2 Bank St., Titusville.
 W. J. PETERMAN, Rt. 3, Stoystown.
 G. J. REDMOND, 7331 Lawndale Ave., Philadelphia.
 J. A. SAUNDERS, 22 S. Springfield Rd., Clifton Heights.
 G. W. SCHMUCKER, 621 West Main St., Rockwood.
 VERNON SCOPEL, Box 97, Joffre.
 F. S. SEBOLT, Box 329, Fredericktown.

O. K. SMITH, 32 Bushnell St., Bradford.
 A. W. STEPHENS, Rt. 3, Lehigh County, Allentown.
 L. R. STERNER, 438 Lincoln St., York.
 B. W. SULLINGER, Box 115, Homer City.
 D. K. SWARTZ, 41 North 14th St., Harrisburg.
 A. J. TAORMINA, 167 Hebron St., Johnstown.
 H. K. TUCKER, Tionesta.
 J. J. UNGER, Rt. 2, Bath.
 D. W. VAN AULEN, 253 S. Ann St., Lancaster.
 G. M. WEIGLE, 30 North Pershing Ave., York.
 E. G. WILSON, Rt. 1, McClure.
 B. C. WOLFORD, Box 16, Duncannon.
 E. J. WOLTKIEWICZ, 1529 E. Moyamensing Ave., Philadelphia.
 C. M. WOOD, Fulton Apt., Bradford and Easton, Roslyn.
 L. M. WORTHINGTON, 115 South Mill St., Birdsboro.
 R. C. YOUNG, 49 Center Ave., Schuylkill Haven.

RHODE ISLAND

BERNARD ANDERSON, 100 Raymond Ave., Pawtucket.
 E. P. FRIGON, 30 Manville Rd., Cumberland Hill, Manville.

SOUTH CAROLINA

A. C. BAILEY, Care Transport Inn, West Columbia.
 LEROY BURNETT, 304 Morgan St., City View, Greenville.
 J. A. CANNON, 31 Seventh St., Navy Yard.
 G. M. HEDDEN, 211 Johnson St., Anderson.
 B. H. HOOPER, 18 D St., Judson, Greenville.
 O. C. RINEHART, Rt. 1, Box 46, West Columbia.
 N. T. RUSSELL, 204 Carolina St., Columbia.
 E. F. SAUNDERS, 77 Padgett Loop, Waltherboro.
 J. C. SHINN, 2711 Millwood Ave., Columbia.
 GILFORD T. SMITH, Rt. 1, Catawba.
 W. F. STEGALL, 229 Lee St., Rock Hill.
 M. D. WRIGHT, JR., Box 17, Rt. 4, Loris.

SOUTH DAKOTA

E. R. ANDERSON, 602 East Third St., Dell Rapids.
 D. E. BERGHIEH, Howard.
 L. E. HARING, Rt. 1, Box 104, Rapid City.
 F. D. PETERSEN, Rt. 2, Parker.

TENNESSEE

W. J. BREEDING, Tazewell.
 D. C. BROCK, Rt. 7, Sparta.
 J. W. HATCHER, Centerville.
 H. C. NEEDHAM, Rt. 2, Kenton.
 W. E. NIXON, Rt. 1, Madison.
 W. L. NIXON, Rt. 1, Old Hickory.
 W. C. OWENS, Rt. 1, Fairview.
 QUINCY PAGE, Rt. 1, Trimble.
 BILLYE PORCH, Fowkes.
 D. B. REID, 3900 Baxter Ave., Nashville.
 R. R. ROACH, 208 E. Watauga Ave., Johnson City.
 B. H. ROWLAND, Gordonsville.
 R. P. SMITH, 351 Cleveland St., Apt. 54, Memphis.
 W. E. SMITH, 102 Scott Ave., Nashville.
 J. W. SORRELL, Rt. 1, Dyersburg.
 R. G. SWINDELL, 1711 Villa Pl., Nashville.
 J. M. WALKER, 1308 Lawrence St., Old Hickory.
 R. C. WHITE, JR., 809 Connell Ave., Dyersburg.
 W. L. WILLIAMS, 801 Dodson St., Old Hickory.
 R. J. YOAKUM, Box 32, Jacksboro.

TEXAS

B. J. ALSUP, 2201 Avenue H, Lubbock.
 F. M. APPELT, 2609 Reynolds St., Houston.
 O. C. BOLTON, P. O. Box 1672, Vernon.
 J. B. BOWDEN, Rt. 1, Rusk.
 R. L. BROWN, General Delivery, Kaufman.
 C. B. BURROWS, 750 Locust St., Abilene.
 B. B. CARTER, 21 West College Ave., San Angelo.
 J. D. CARTER, Box 15, McCamey.
 W. M. CROW, 802 West Belknap, Fort Worth.
 M. A. CURTIS, P. O. Box 123, Follett.
 O. J. DAVIDSON, Box 471, Paducah.
 J. L. DAVIS, 612 West Kleberg St., Kingsville.
 EVERETT DAY, Box 246, Canyon.
 J. W. DORRIS, 2825 North Main St., Fort Worth.
 J. H. GORDON, JR., Rt. 2, Axtell.
 A. J. GRIFFITH, Care Post Office, Palmer.
 RAUL GUEVARA, P. O. Box 348, Bena-vides.
 R. J. HALLMAN, Rt. 2, Box 171, Winnsboro.
 M. T. HOBBS, 3118 Avenue M, Fort Worth.
 M. L. KINARD, Mt. Enterprise.

A. V. KRAUSE, 7311 Amarillo Ave., Houston.
 J. D. McENTIRE, 18 East Seventh St., San Angelo.
 E. T. MILLER, 712 North Broadway, McAllen.
 H. E. MORRISON, Box 771, Albany.
 L. C. OCKER, General Delivery, San Angelo.
 M. D. PAYNE, Mt. Pleasant.
 J. H. POWERS, Box 202, White Bear.
 S. P. ROBERTSON, Rt. 3, Box 1, Pittsburg.
 J. V. STEPHENS, Box 143, Burleson.
 JULIO TALAVERA, 712 Santa Fe St., El Paso.
 B. R. VAN NORDEN, 1201 North Fulton St., Marshall.
 C. B. WHITE, JR., 3720 Travis Ave., Fort Worth.
 R. A. WIGINGTON, Box 16, Rochelle.
 T. F. YOSTEN, Rt. 1, Muenster.

UTAH

A. W. ASHTON, 171 West 1 North, Logan.
 T. H. SAUL, 608 South 10th East, Salt Lake City.

VERMONT

F. N. BLACKKINTON, 6 Hill St., Waterbury.
 A. W. MAYO, 16 1/2 Huntington St., St. Albans.

VIRGINIA

D. C. BETHEL, Powhatan.
 R. E. CASTILLO, 209 E. St. Copland Park, Newport News.
 F. D. COMPTON, Drill.
 R. L. CONNER, East Lexington.
 G. F. GIBBS, 1128 Patterson Ave., S.W., Roanoke.
 W. B. HILLMAN, Norton.
 J. E. LAKE, 702 Levy Ave., Charlottesville.
 J. A. O'NEILL, 3116 Grove Ave., Richmond.

WASHINGTON

LESTER W. ABITZ, 1624 W. Sharp Ave., Spokane.
 J. E. BOLAND, 3808 Genessee St., Seattle.
 H. G. CANNEDY, Rt. 3, Dayton.
 J. R. CROFT, 2924 Nassau St., Everett.
 R. M. FRYE, 716 North L St., Tacoma.
 C. R. JOHNSON, 887 Hurney St., Seattle.
 F. C. MARTIN, 4971 12th Ave., S., Seattle.
 H. W. McCORMICK, 1529 17th Ave., Apt. 1, Seattle.
 C. C. TERNAN, Rt. 2, Box 91, Bellevue.
 C. M. WILLIAMS, JR., Rt. 2, Summitview, Yakima.

WEST VIRGINIA

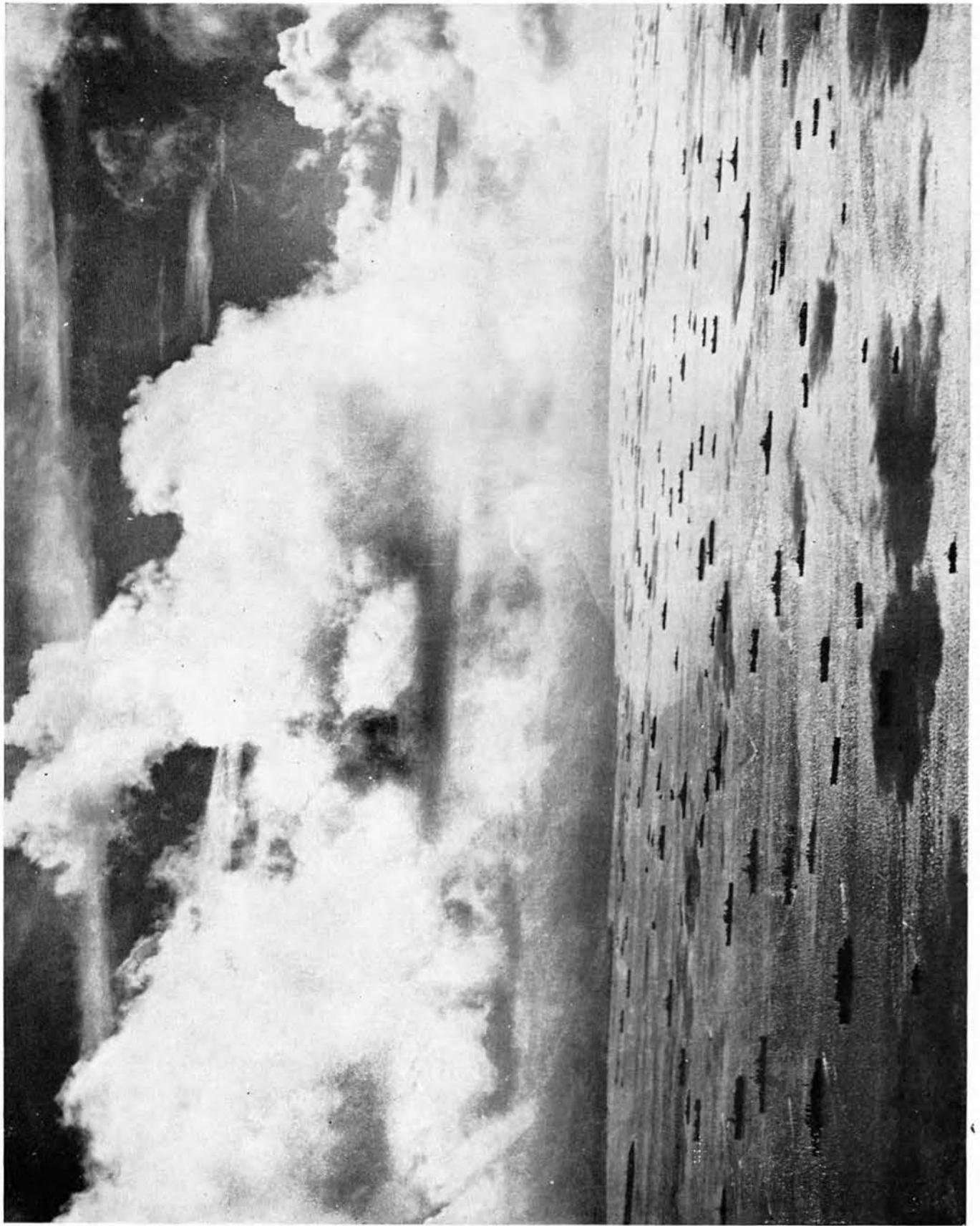
W. C. ALLEN, Culler Rd., Weirton.
 R. W. BRINDLE, JR., 508 Columbia Ave., Charleston.
 JACK D. GARRETT, Box 503, Spencer.
 A. M. GUM, 201 Randolph Ave., Elkins.
 N. C. HEDRICK, General Delivery, Mab-scott.
 L. C. HORNBER, 2906 E. Seventh St., Parkersburg.
 C. W. LANUM, Clifton Heights, Gen. Del., Elm Grove.
 A. E. PARKER, Laurel Dale.
 ROBERT PERRY, 103 13th St., Dunbar.
 F. L. PICCIRILLO, 438 Main St., Follans-see.
 A. R. ROGERS, P. O. Box 89, St. Albans.
 J. E. SHAPPER, P. O. Box 17, Kingwood.
 M. R. TEEL, Big Chimney.
 A. M. TRACEY, 810 Dudley Ave., Vienna.

WISCONSIN

W. L. ALMOS, 1312 Winnebago St., La Crosse.
 A. J. ANDERSON, 715 Dorr Ave., Rhine-lander.
 L. J. CROSSMAN, 704 W. Arnold, Marsh-field.
 L. J. DAHLBERG, 201 South Cedar St., Marshfield.
 CONSTANTINE HAMER, 226 1/2 E. Wisconsin Ave., Appleton.
 R. E. HOLMES, 706 Phoebe St., Green Bay.
 A. B. JUTRASH, 2614 W. Greenfield Ave., Milwaukee.
 A. G. LUETKE, 1509 Bridge St., Water-town.
 L. A. SCHROEDER, 3350 North 23rd St., Milwaukee.
 R. A. STANCER, 225 East South St., Beaver Dam.
 L. B. THOMAS, 1321 Spaight St., Madison.
 L. A. WEGNER, 3919-A E. Hammond, Cudahy.
 G. H. WRIGHT, 2321 North 13th St., La Crosse.

WASHINGTON, D. C.

W. S. ENNIS, 1609 Isherwood St., N.E.
 W. C. MOORE, 4124 Third St., N. W.
 J. P. PEPPER, 2516 Penn. Ave., S.E., Apt. 1.
 R. W. RIPPERGER, 4619 Quarles St., N.E.
 GUY STURIALE, 316 Fifth St., N.E.



Seeadler Harbor a few days prior to the start of the Leyte invasion.



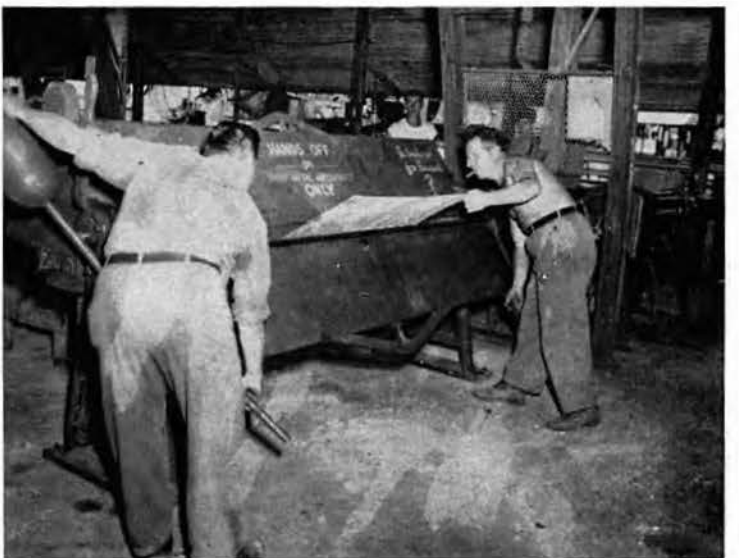
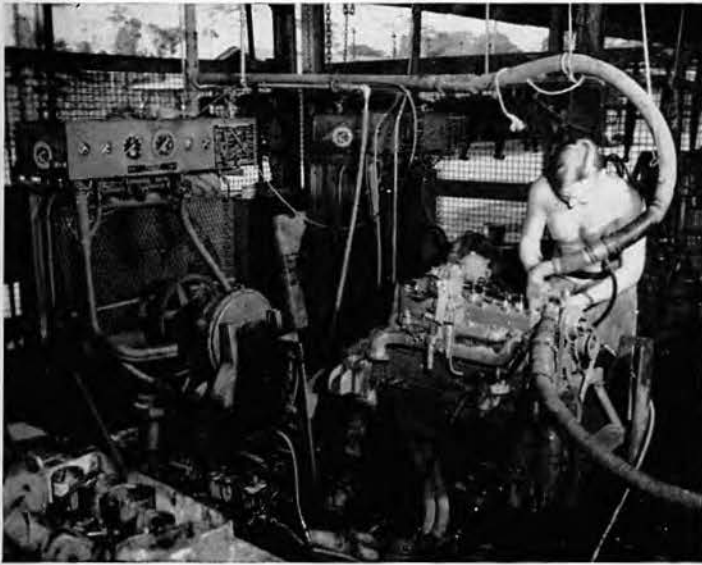
AT WORK

A E R U

AUTO REPAIR

Gasoline-powered units from one-fourth horse power on up.





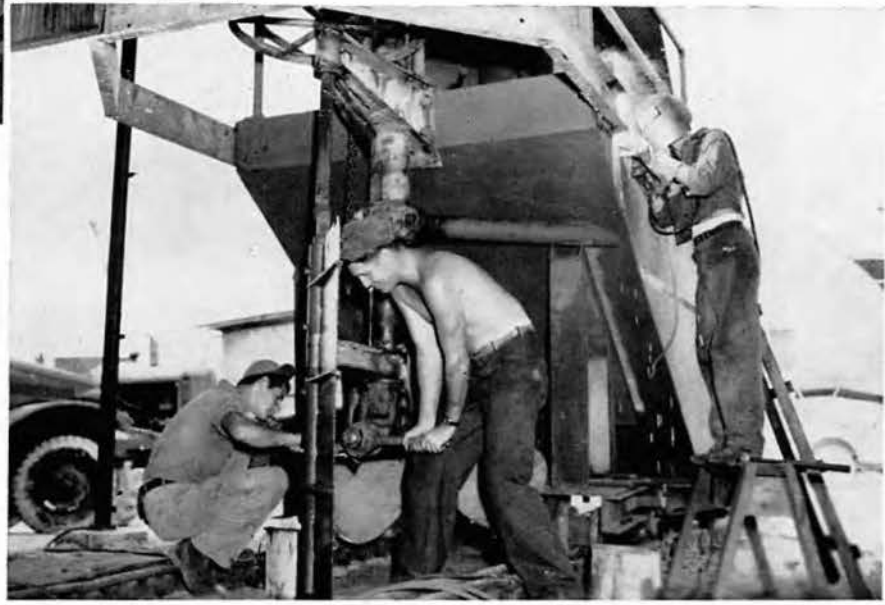
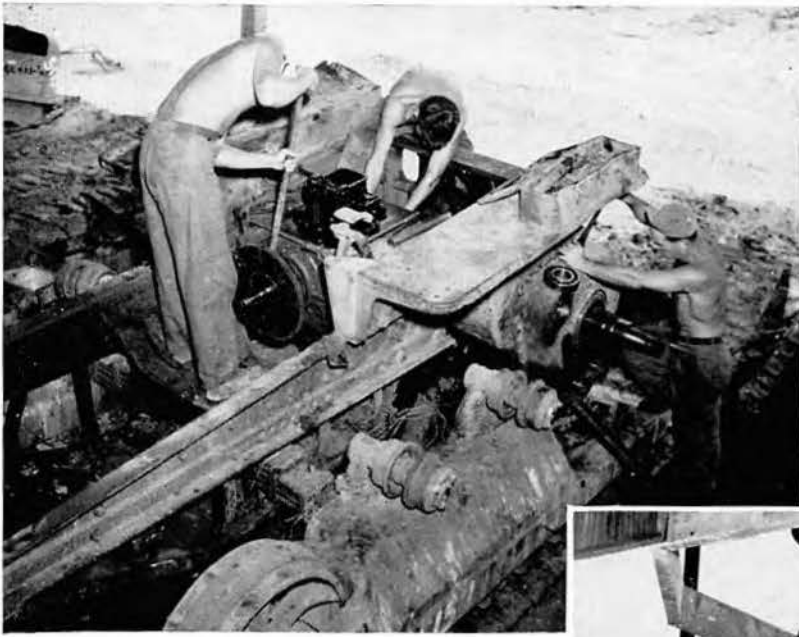




HEAVY EQUIPMENT

... all of the big stuff.







HEAVY EQUIPMENT SUBSIDIARIES

... Electric Shop.

... Welding Shop.

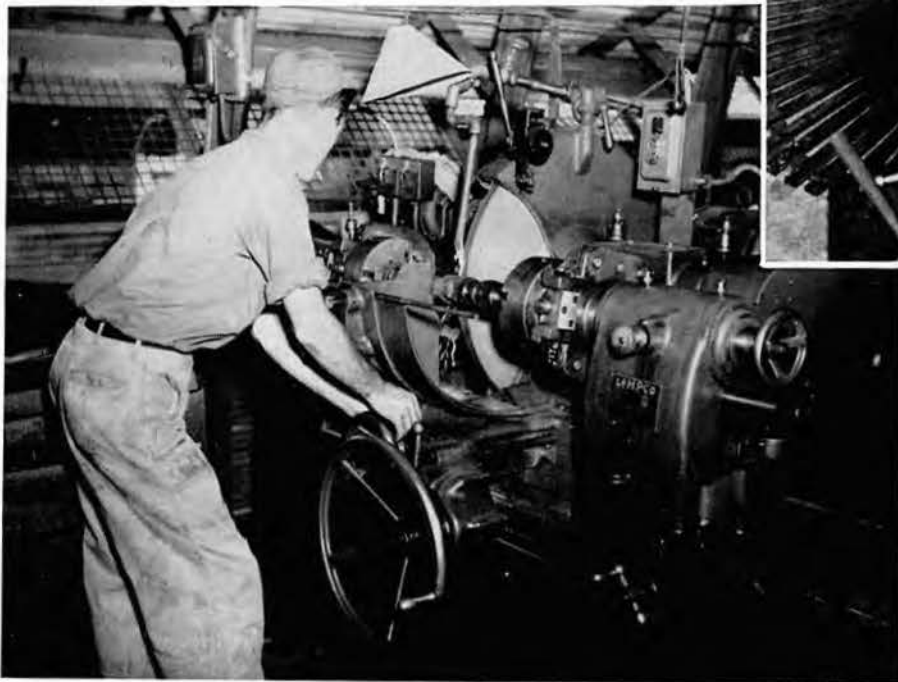
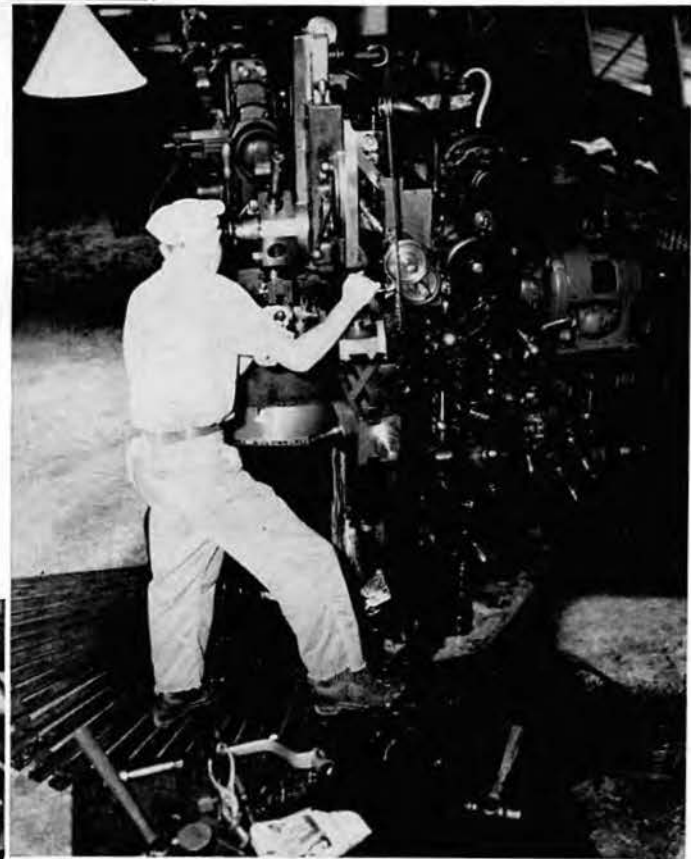
... Blacksmith Shop.



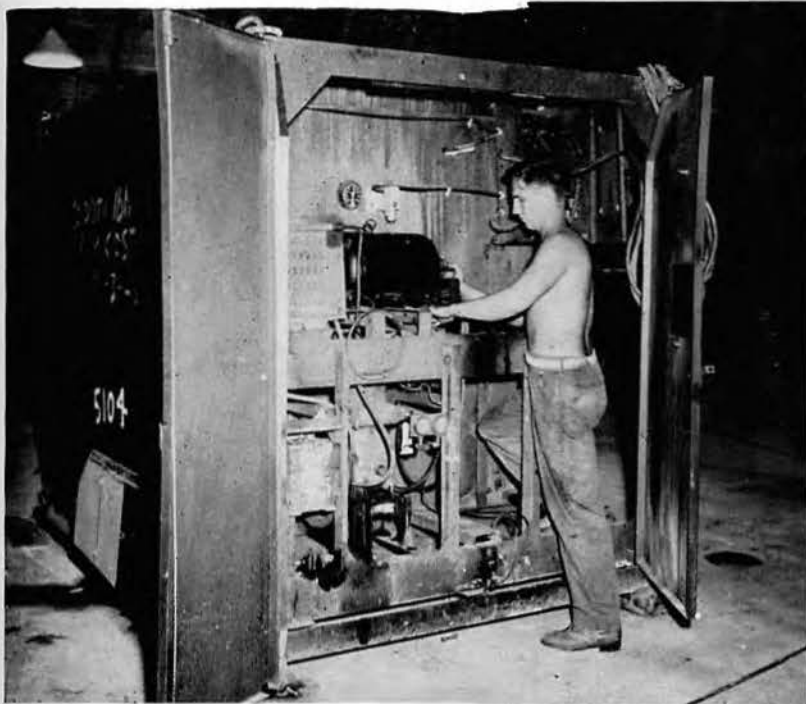
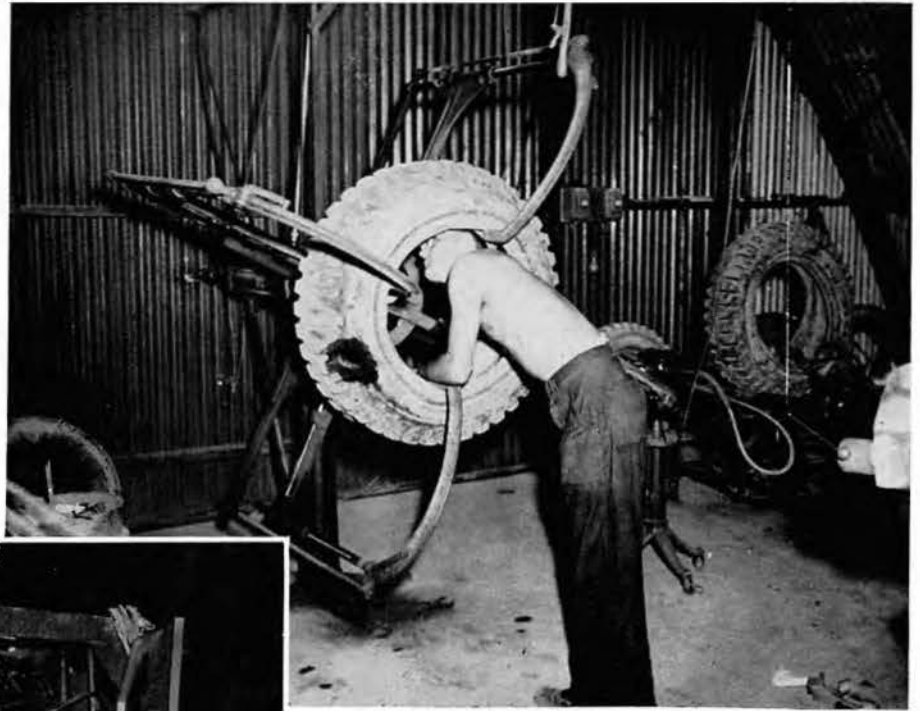


MACHINE SHOP

. . . machines and "know-how" to make anything from watch parts to tire molds.



TIRE SHOP



**GALLEY EQUIPMENT
REPAIR**



PAINT SHOP



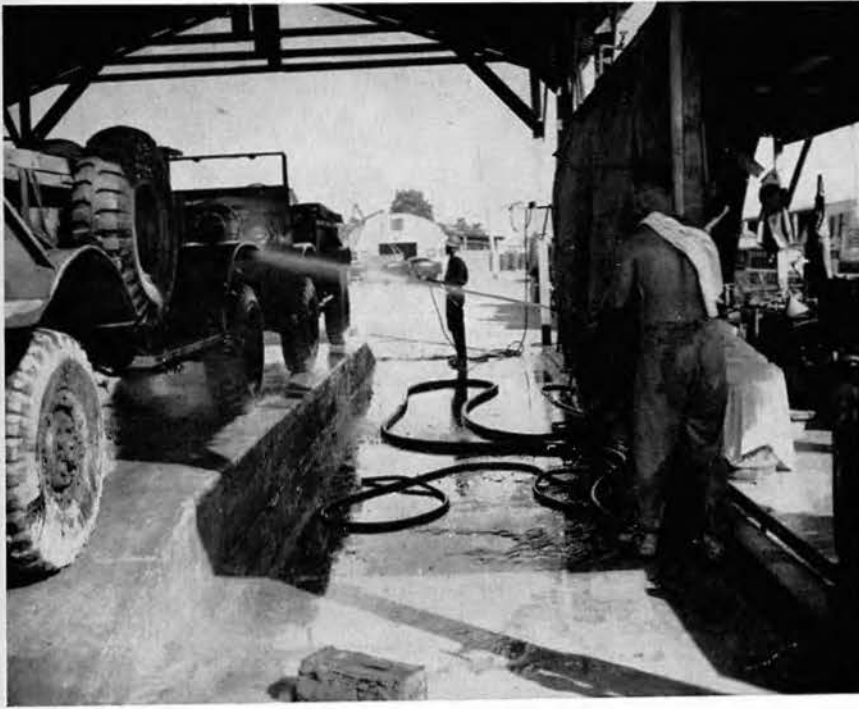
BATTERY SHOP



MOTORCYCLE REPAIR

SAIL LOFT





MAINTENANCE AND INSPECTION





Receiving.

A C E P D

. . . over 100,000 items, totaling millions of pieces . . . ranging from tiny brass washers to "cat" tracks weighing better than a ton and a half.

Requisitioning.





Protective Wrapping.



Picking.

Left, Binning.



ACEPD Shipping.



All Allied forces served.

SALVAGE YARD

... junk of all kinds and description.





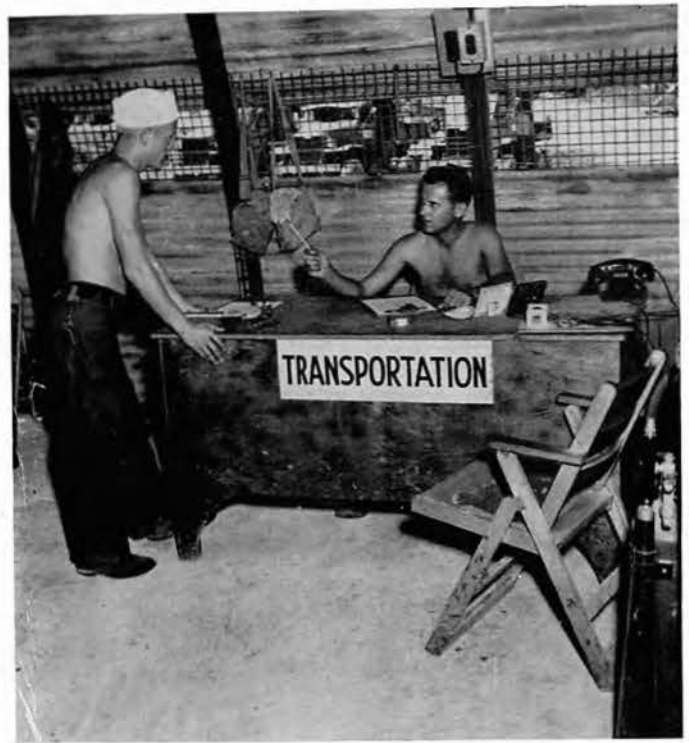
PUBLIC WORKS

. . . commonly known as WPA . . .
maintenance, construction and most
anything.





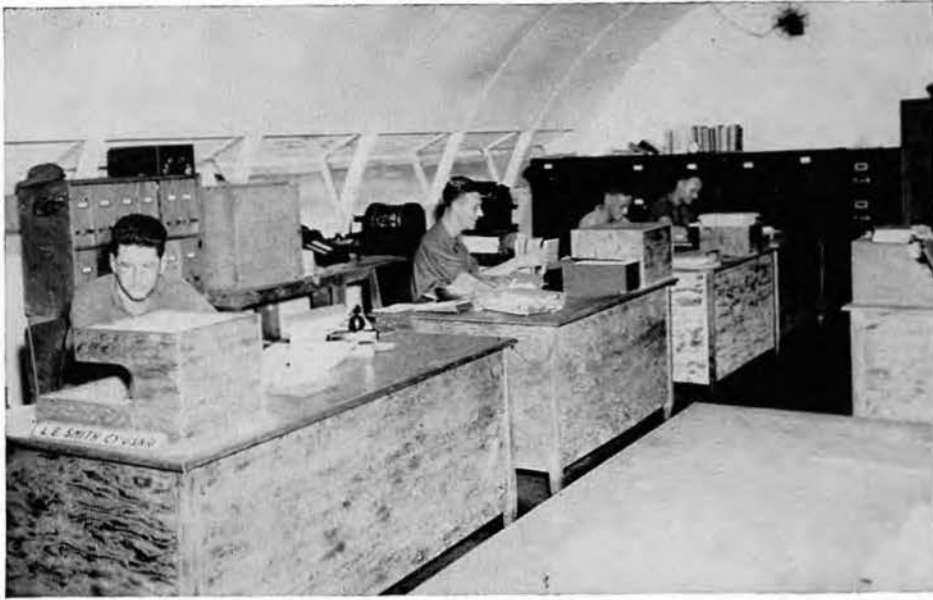
Supply.



Transportation.

Telephone service—BuDocks Exchange.



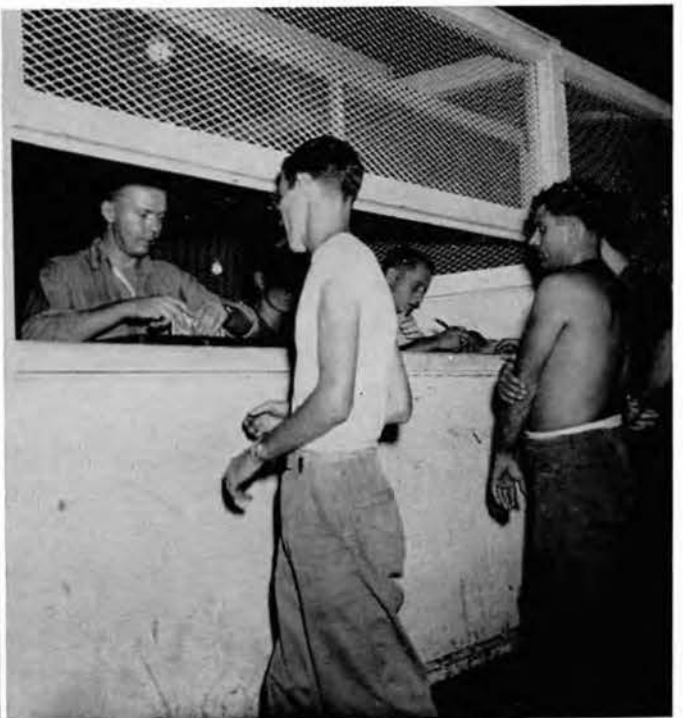


Left, Personnel Office.



Right, Censors.

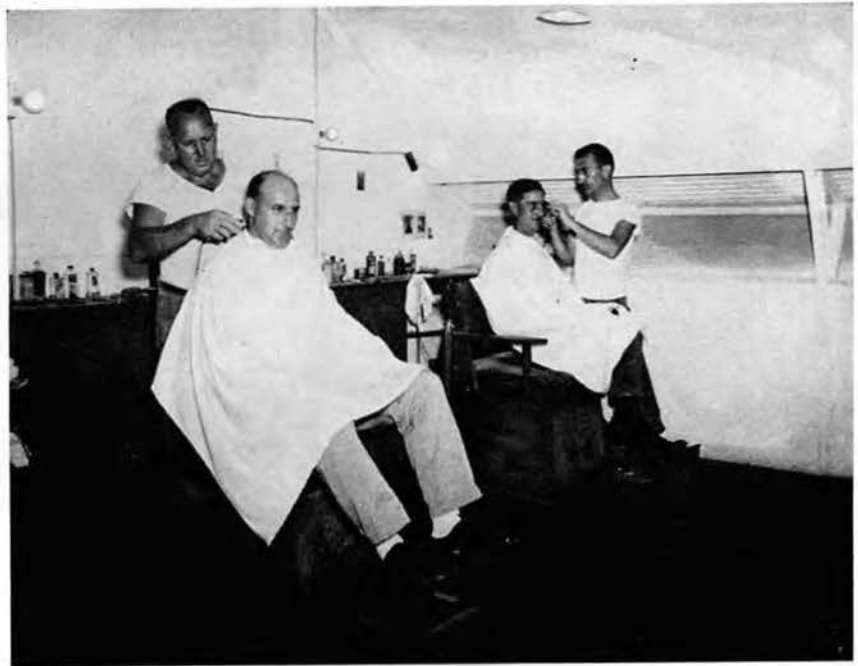
Below, the pay off from both sides.



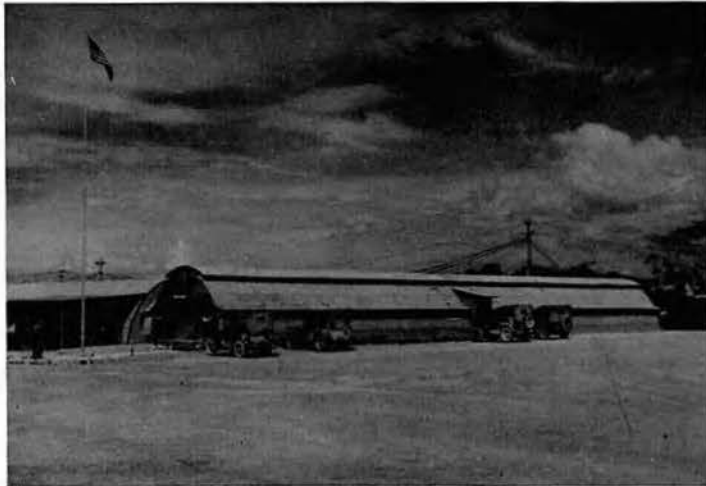


Above, the Islands' best steam laundry.

Right, Barber Shop . . . complete with peppermint pole outside.



Left, the cobblers.



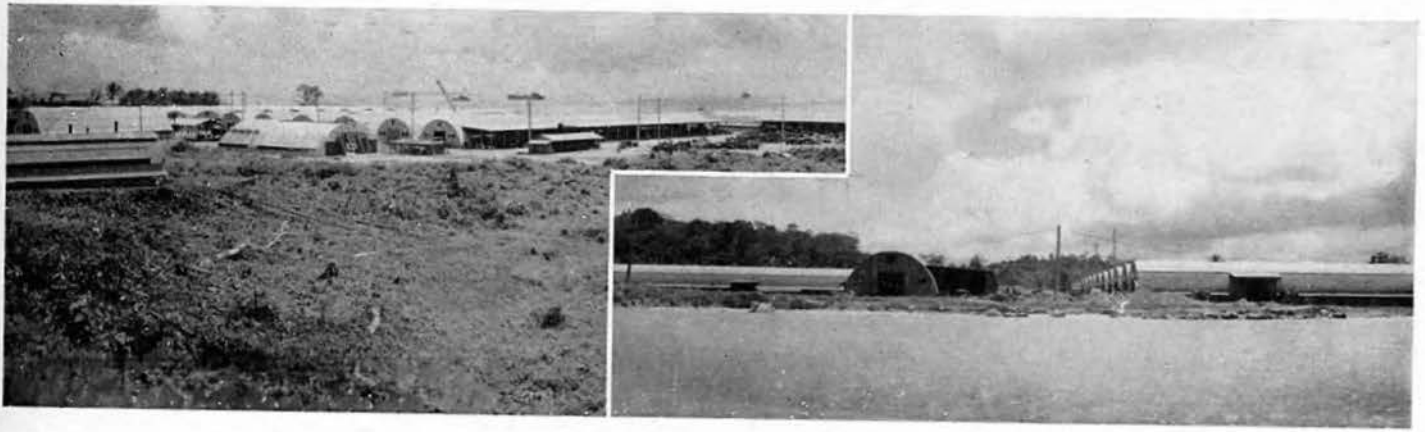


SICK BAY



THE GALLEY

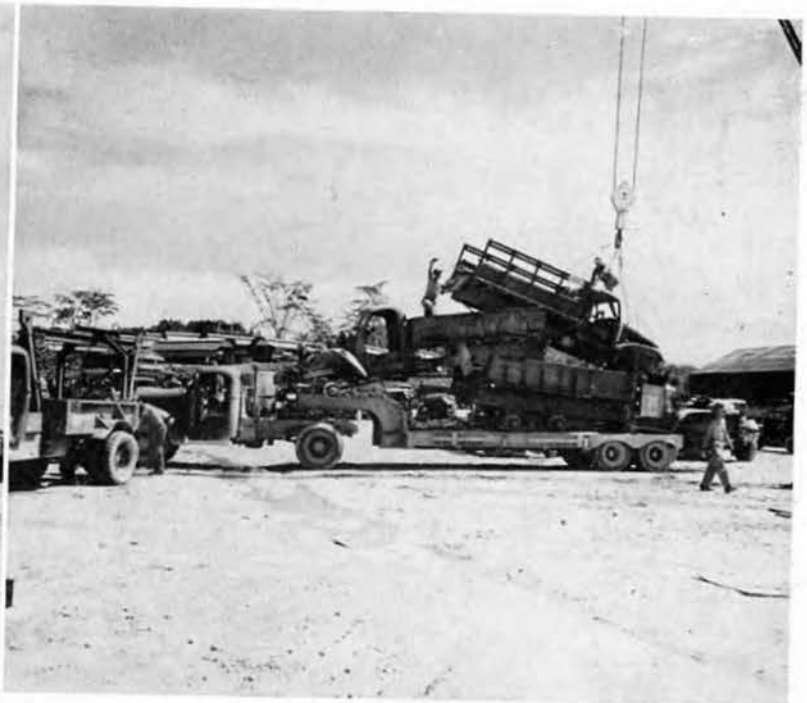


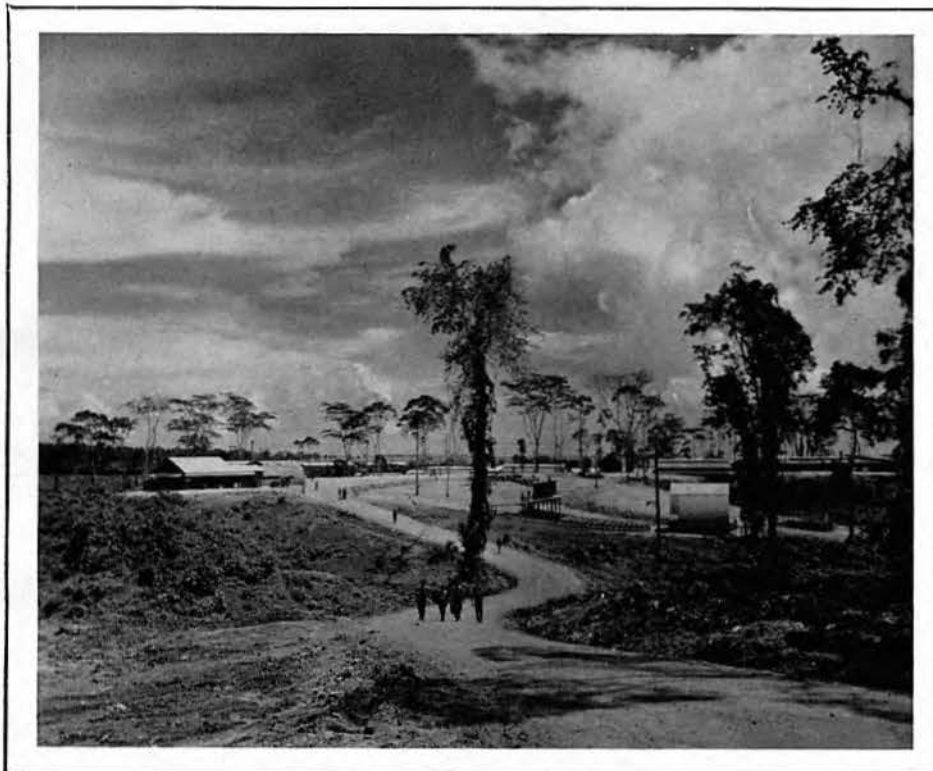


Portions of the Shop Area from the hill and the harbor.



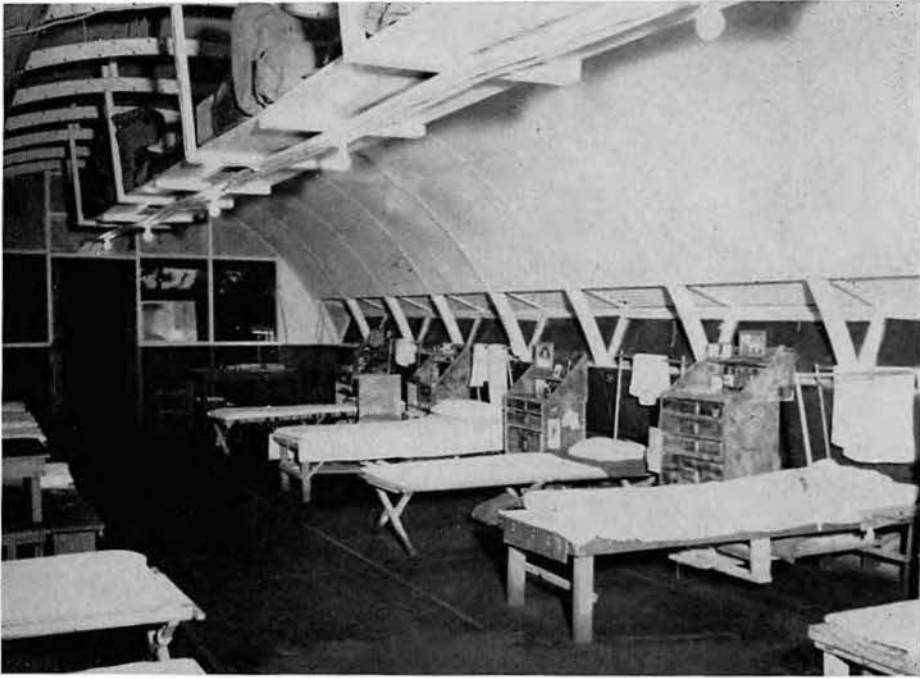
Above, the local "National Guard." Below, final Salvage Yard clean up.





LIVING

... if our existence could be called such.

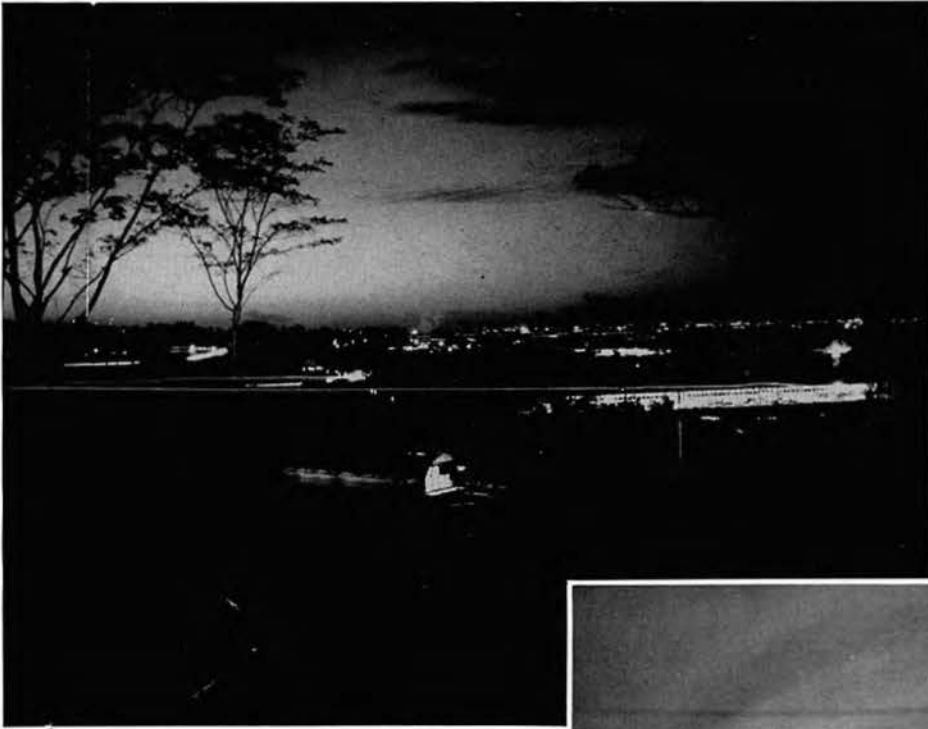




That a man should live long enough to see sights like *left* and *below!*

It happened only once. They're
USO entertainers.





The Area by night.



Dawn in the Admiralties.



Left, the "stockade," social and scuttlebutt center.

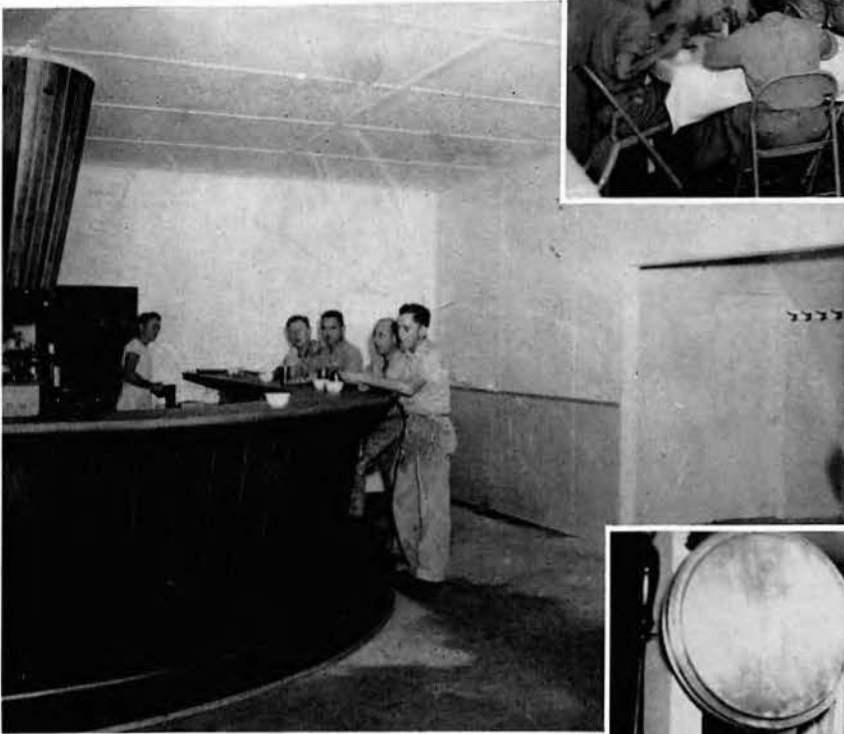
Below, Seeadler Harbor V-J night.

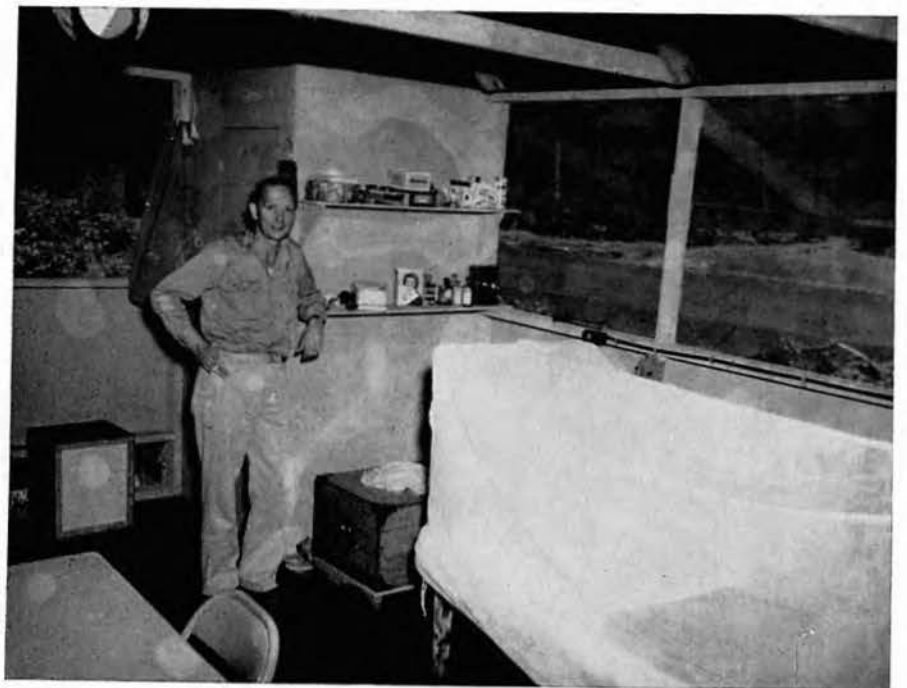




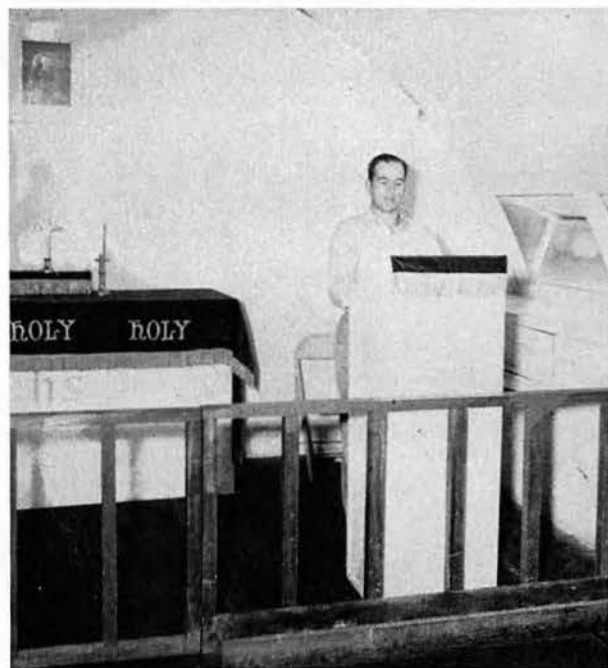
OFFICERS' COUNTRY

... clubhouse at the left.

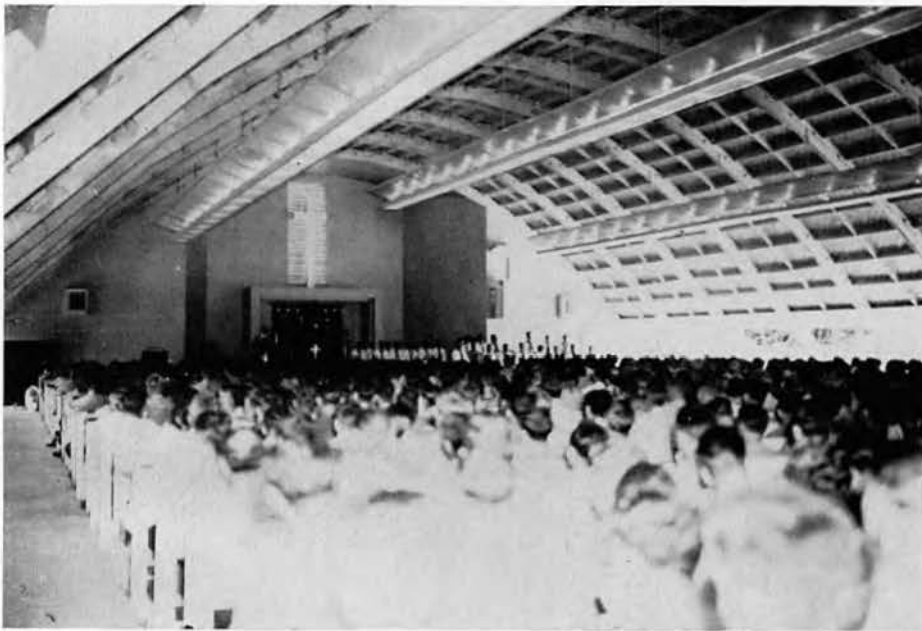




RELIGION



The Chapel of the Admiralties, said to be the most beautiful chapel in the South Pacific. It was Seabee built.



Interior of the Chapel of the Admiralties.

Momote Chapel. Here, for a time, were buried the men who gave their lives to take Momote airstrip and Los Negros.





THE THEATRE

Pictures, *directly below and lower left*, were taken during the gala opening, December 24, 1944.





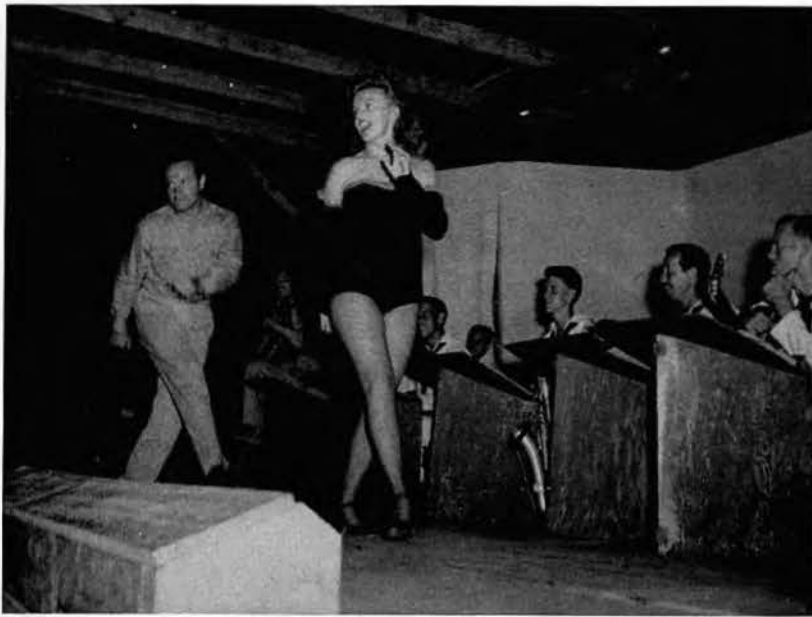
Left, 1050 chorus

Right, 1050 Hill Billy Band.



Below . . . M-G-M Studios Dining Room,
June 2, 1944.

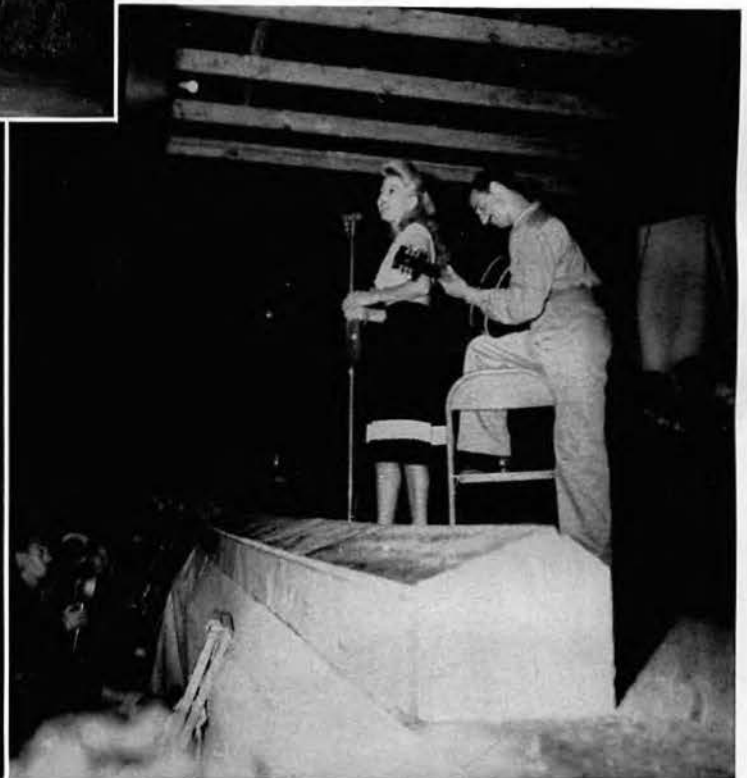




The Bop Hope Show, topside theatre, August 30, 1944, with Frances Langford, Jerry Colonna, Patti Thomas, Tony Romano and others.

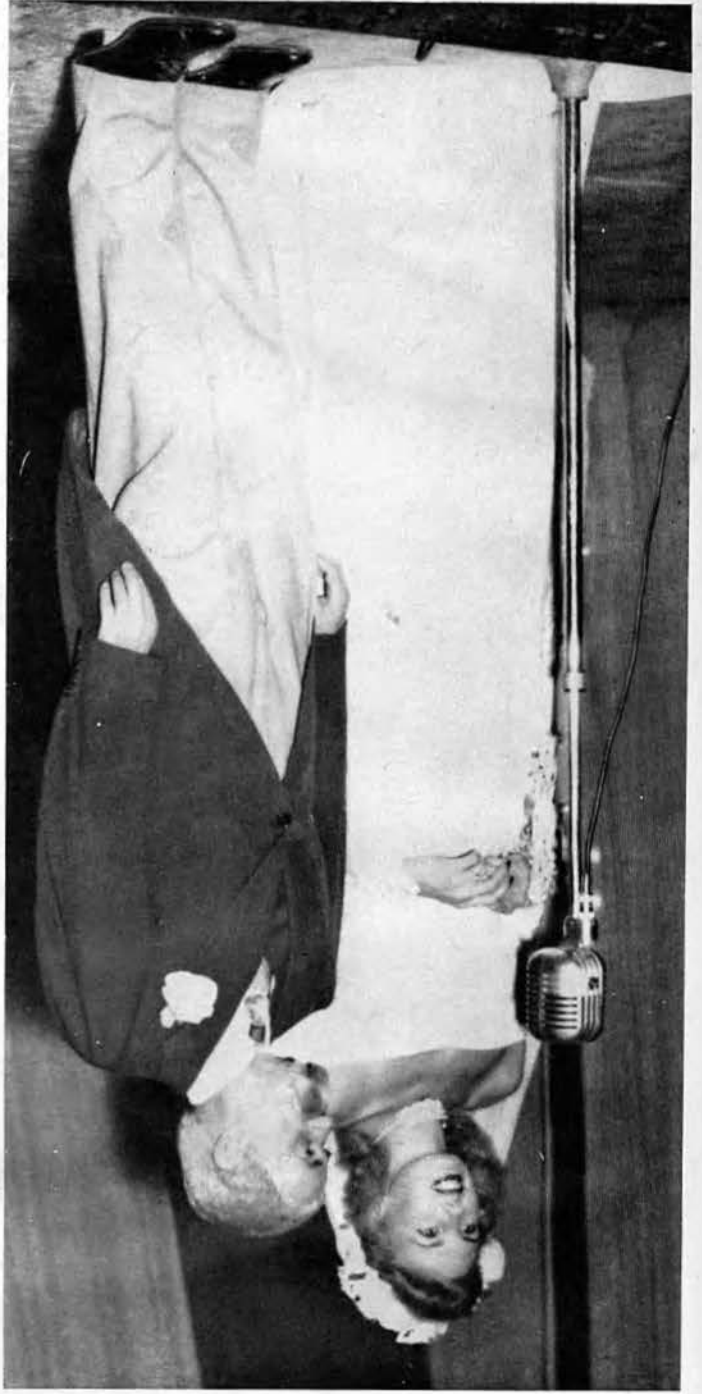
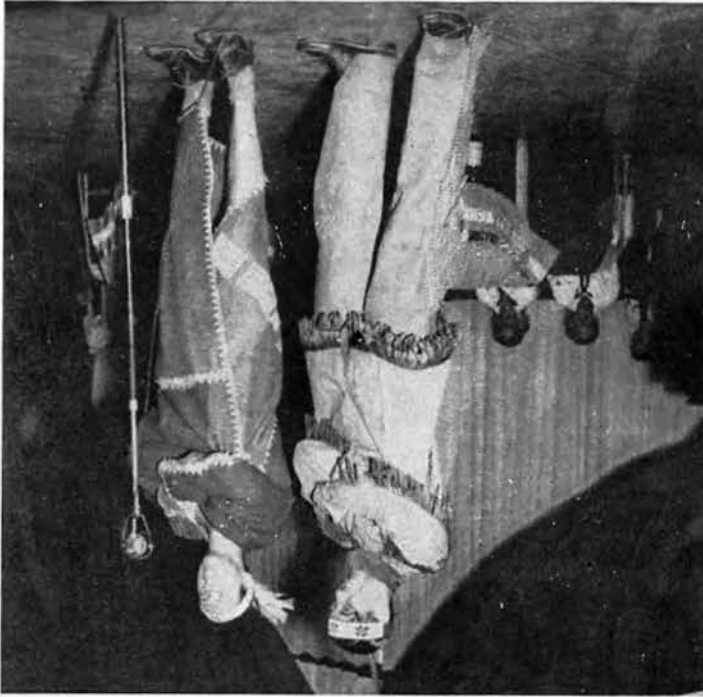
Hope was wonderful in more ways than one. Astride a sailor, he put out a fire. During an emergency, he played maid to Patti Thomas . . . the lucky dog.

Pictures on the three following pages are of USO shows playing at the 1050th theatre.



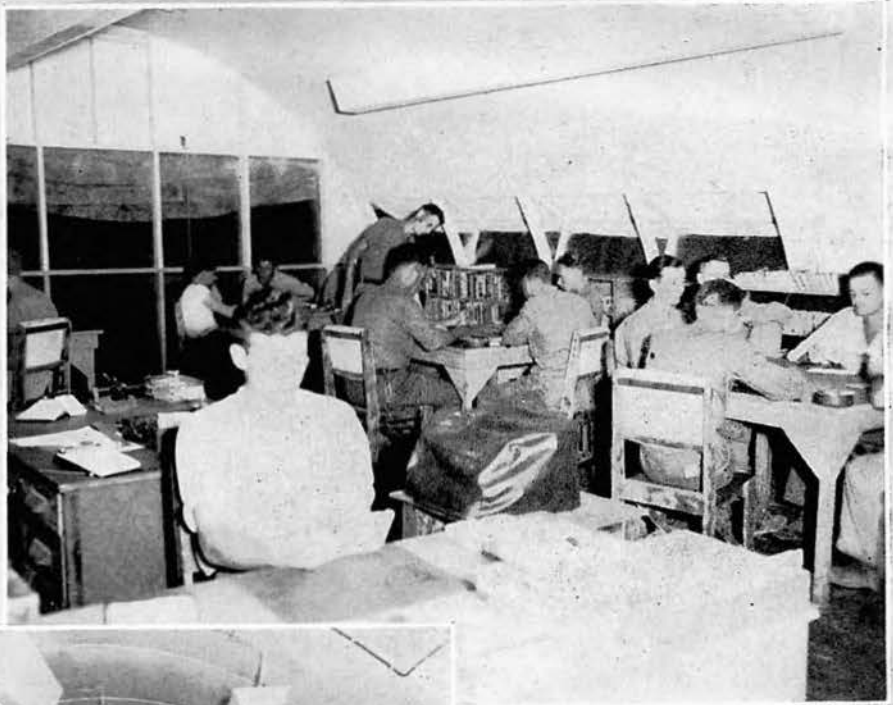


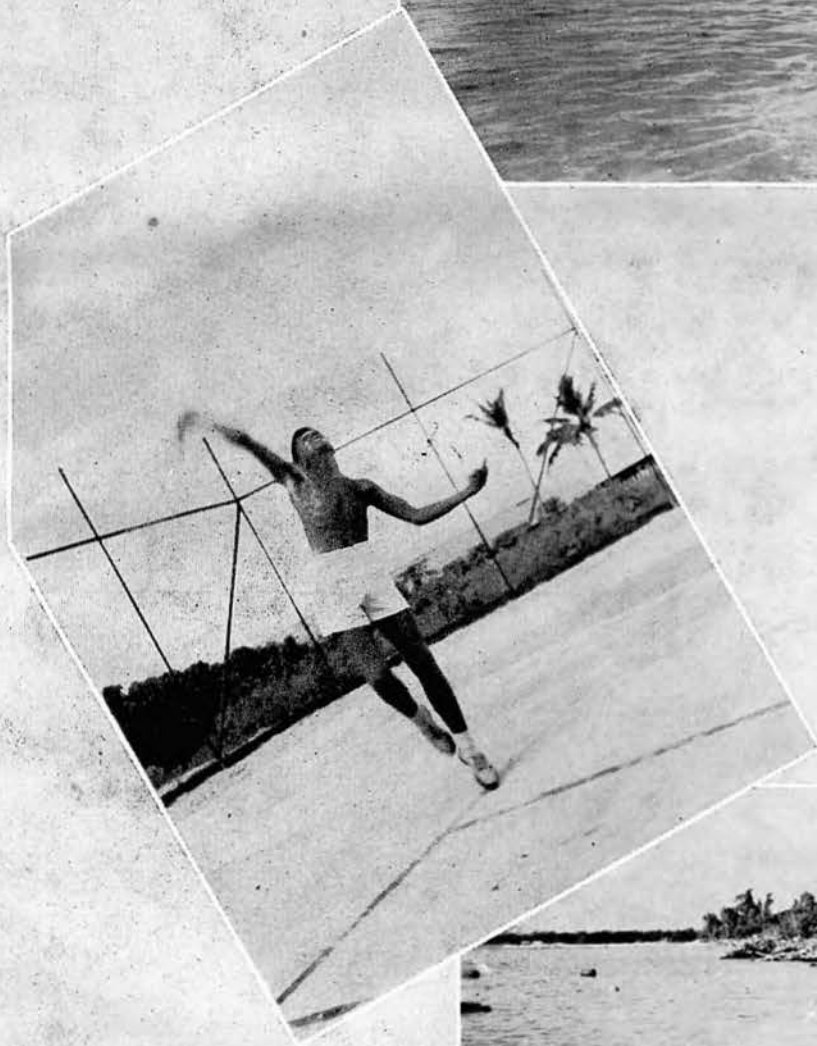






RECREATION







The Fleet . . . for fishing, sight-seeing
and other purposes.

*Upper right, BLUE MARY under way.
JUNIOR lies at anchor off BLUE
MARY'S starboard bow.*





1050's own Ball Field . . .
by night and by day.



BATTALION DAY

. . . a great Seabee tradition. It happens each year on the date of commissioning. It's a very fine deal, for the Officers and Chiefs do all the work.

Ball game complete with big league park announcing.



Supply Officer tries his hand at cooking.

The gal—more Seabee "Can Do."

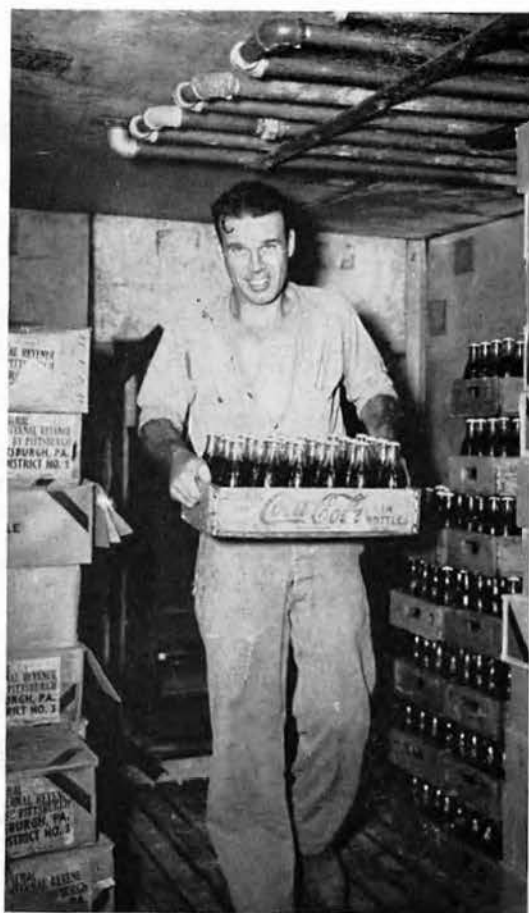


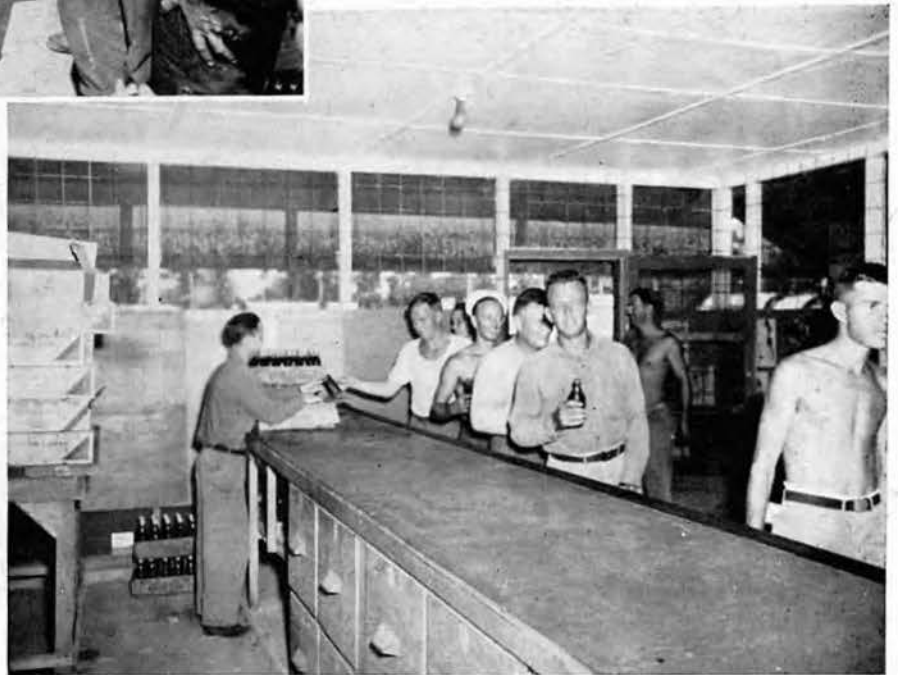




V-J DAY

. . . free beer and "cokes" as long
and as much as one could drink.





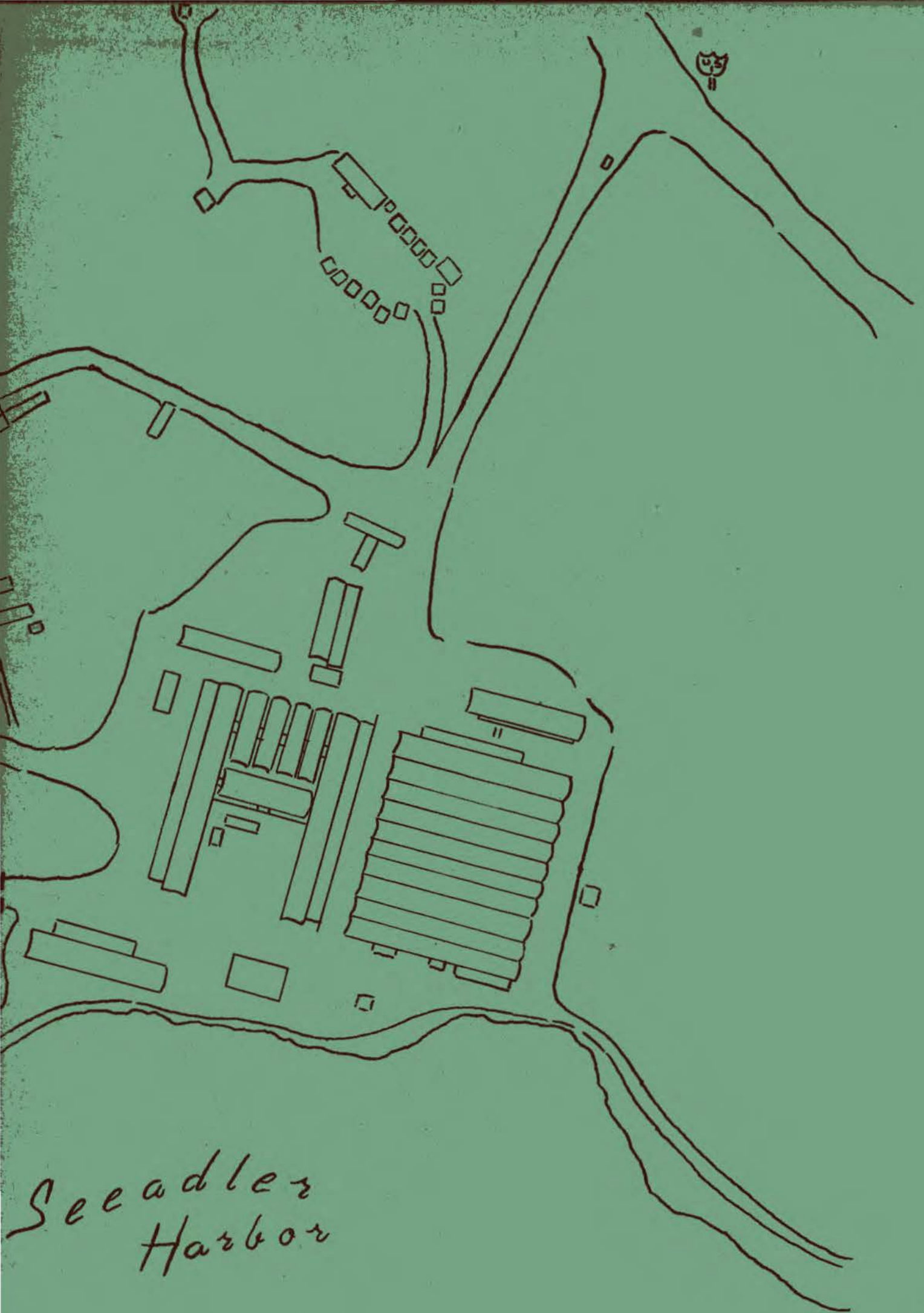


"Home's That Way"

... and that's where we want to be.

CBD 1050 Area
• MANUS ISLAND •





Seeadler
Harbor

George
Widson

